



ARTICULATION TRANSFER LINKED AUDIT SYSTEM (ATLAS)

The Articulation Transfer Linked Audit System, or ATLAS, will connect all Oregon University System (OUS) institutions and Oregon community colleges, helping students and advisors make online comparisons between completed or planned coursework and any degree program, allowing for transparent transfer of credit between institutions. When all OUS institutions and community colleges are connected, ATLAS will allow students and their advisors to use coursework at any of the 24 public postsecondary institutions in Oregon to plan efficient paths to a bachelor's degree.

Accomplishments

The Chancellor's Office made an initial investment in early 2006 to set up the ATLAS system infrastructure and program priority degrees. Each OUS campus has developed plans for implementation, supported by the ATLAS project team. Most campuses have focused on replacing the cumbersome manual system of transferring coursework with the automated, streamlined system that ATLAS offers.

**ATLAS will be active within OUS in fall 2007.
Community colleges will join ATLAS as funds become available.**

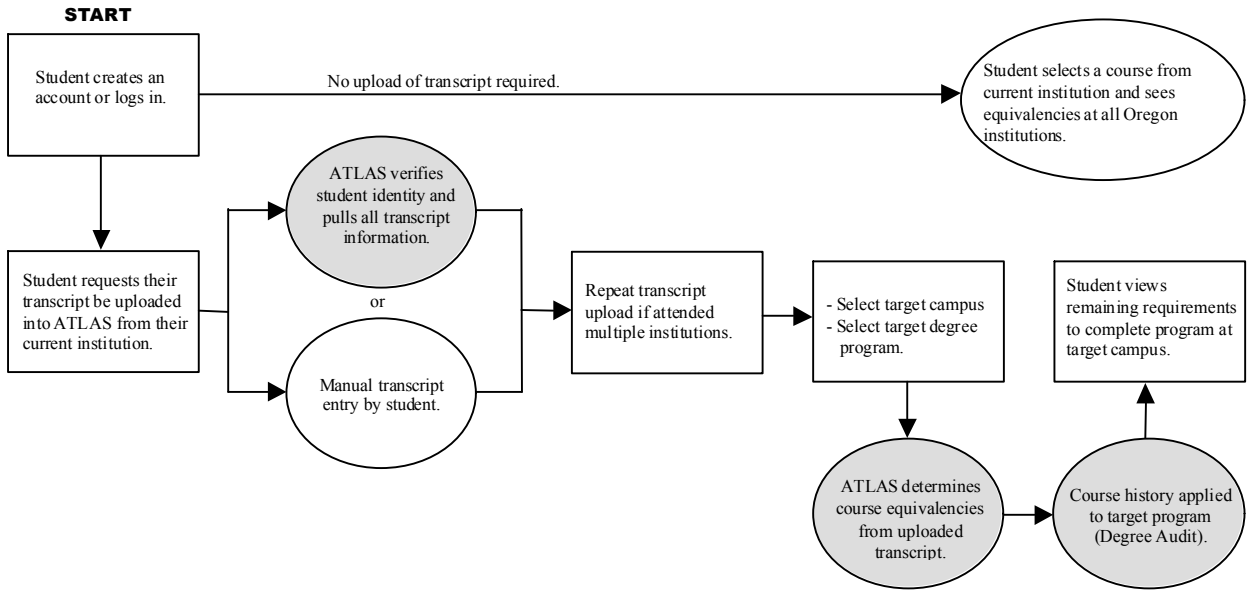
Next Steps

The Governor's Recommended Budget supports funding at all OUS institutions for continued development of the degree-audit framework that powers ATLAS. If funding is available, a training and marketing campaign will offer high school and college advisors training on how to use the system, and how to communicate its availability and benefits to students and other users.

How ATLAS Works

1. Students can find courses at any Oregon public postsecondary institution that will count for credit at their current institution.
2. Students can upload their transcripts from several campuses to their ATLAS account for easy viewing. ATLAS will save this information for future use.
3. Students or their advisors can prepare a planning guide based on their transcript to see the required coursework the student needs to complete any degree program at any participating institution.

The ATLAS Process



Oregon University System