

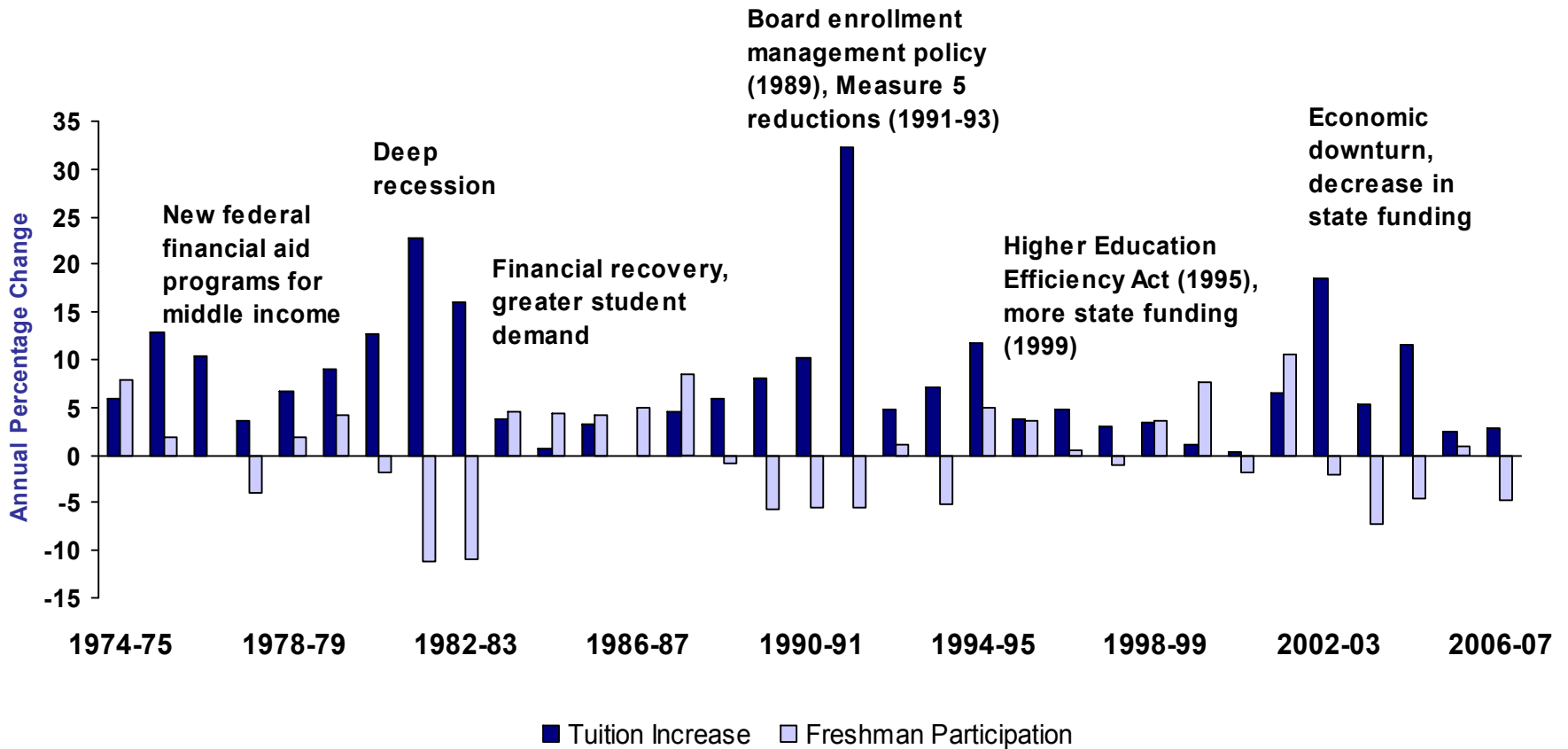


House Committee on Education

Funding of Higher Education in Oregon

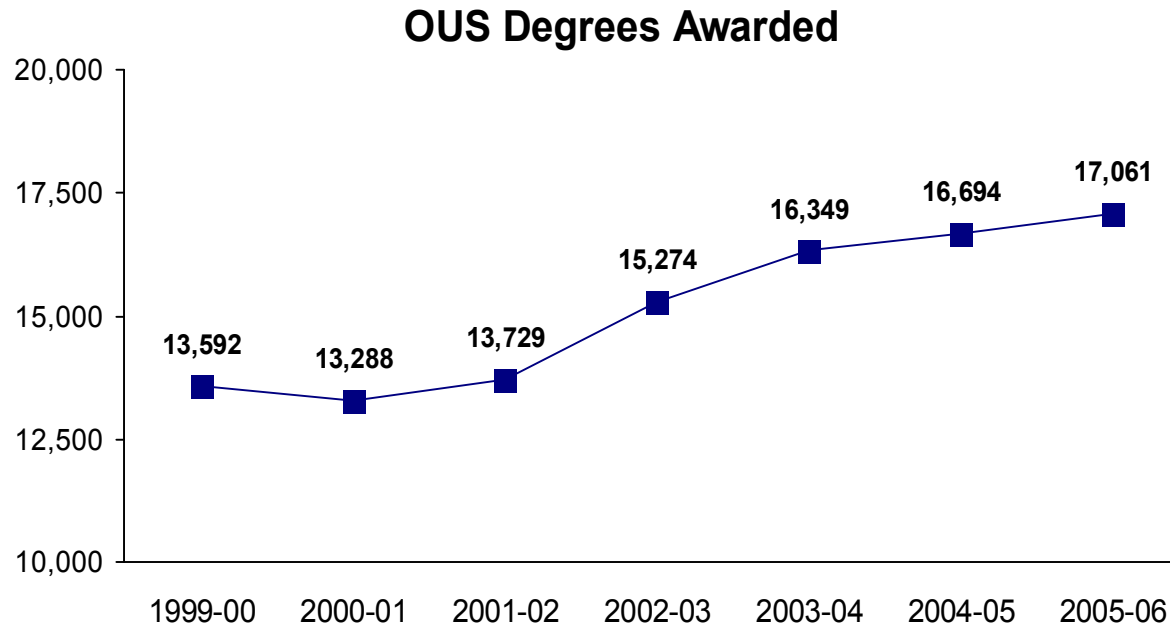


OUS Tuition and Fee Increases Compared to Freshman Participation in the Context of Other Events



Source: OUS Fact Book 2006.

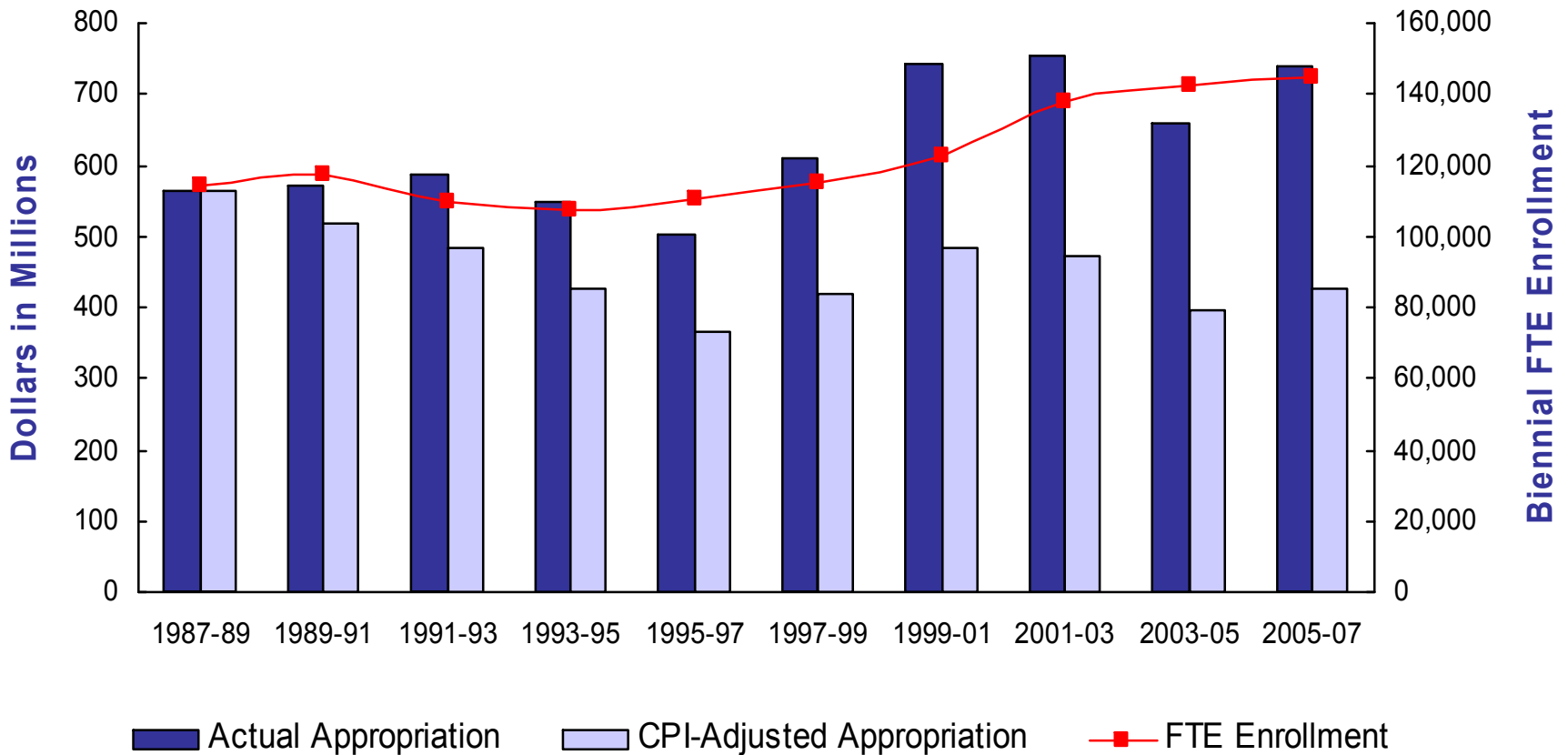
Increases in OUS degrees spurred by state investments in 1999



After several years in the 13,000 range, total degrees awarded jumped to over 15,000 in 2002-03 and rose again by over 1,000 in 2003-04. This dramatic increase of 28% between 2000-01 and 2005-06 may reflect the infusion of state resources in 1999-00 that permitted greater access and enrollment.

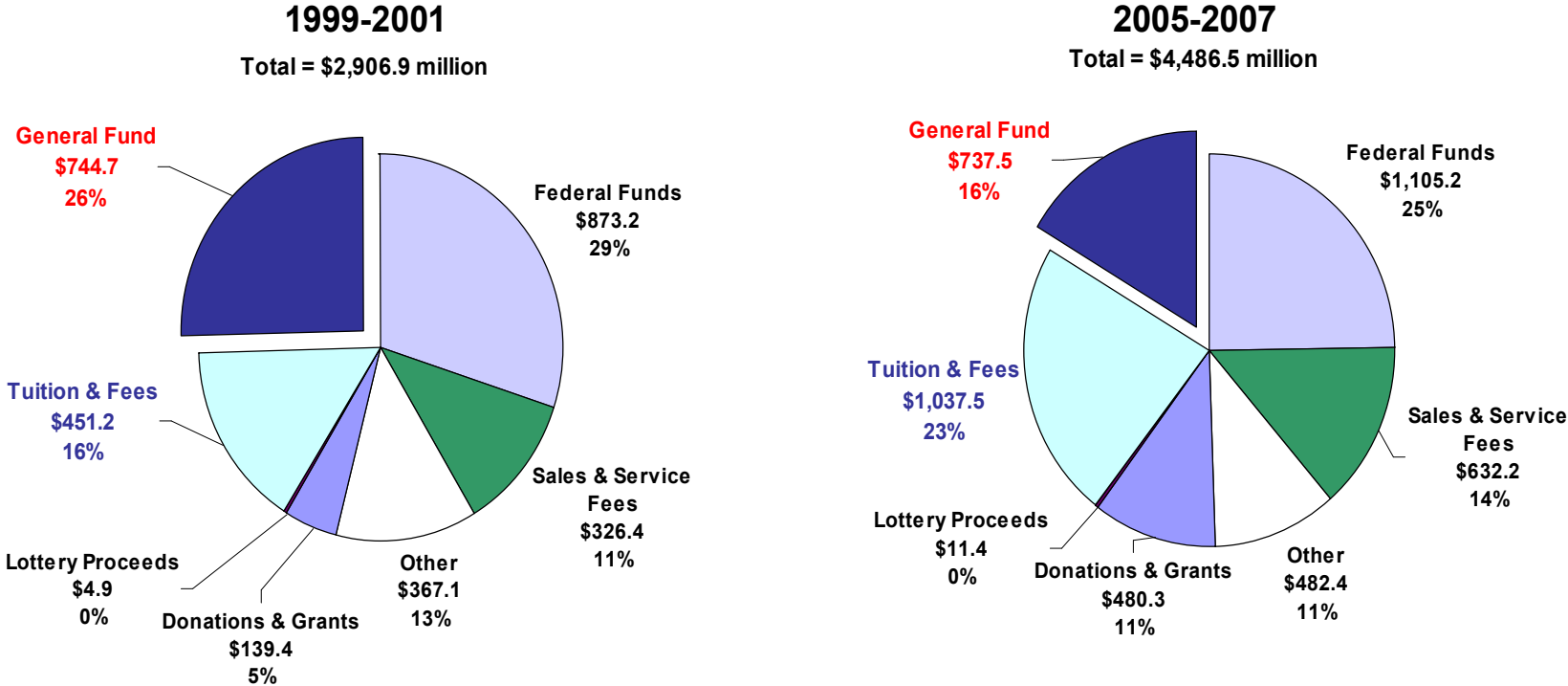
Source: OUS Institutional Research Services.

Biennial State Appropriation and FTE Enrollment 1987-89 to 2005-07



Source: OUS Fact Book 2006.

Source of OUS funds shift from 1999-01 to 2005-07



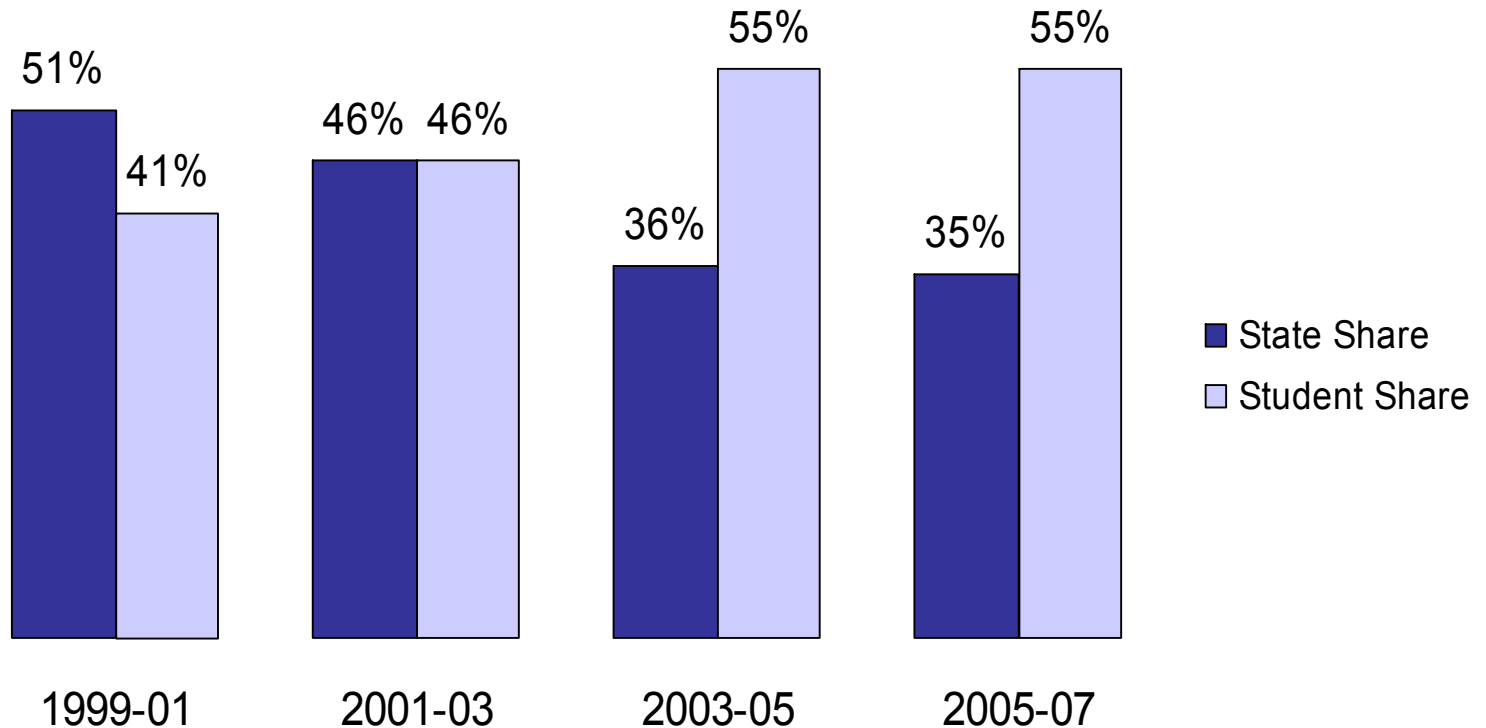
General Fund support dropped from 26% in 1999-2001 to 16% in 2005-2007. Tuition and fees grew from 16% of total funds to 23%.

NOTE: "Other" includes Capital Construction.

Source: OUS Budget Office, Legislatively Approved Biennial Budget.

Students shouldering greater share of costs...

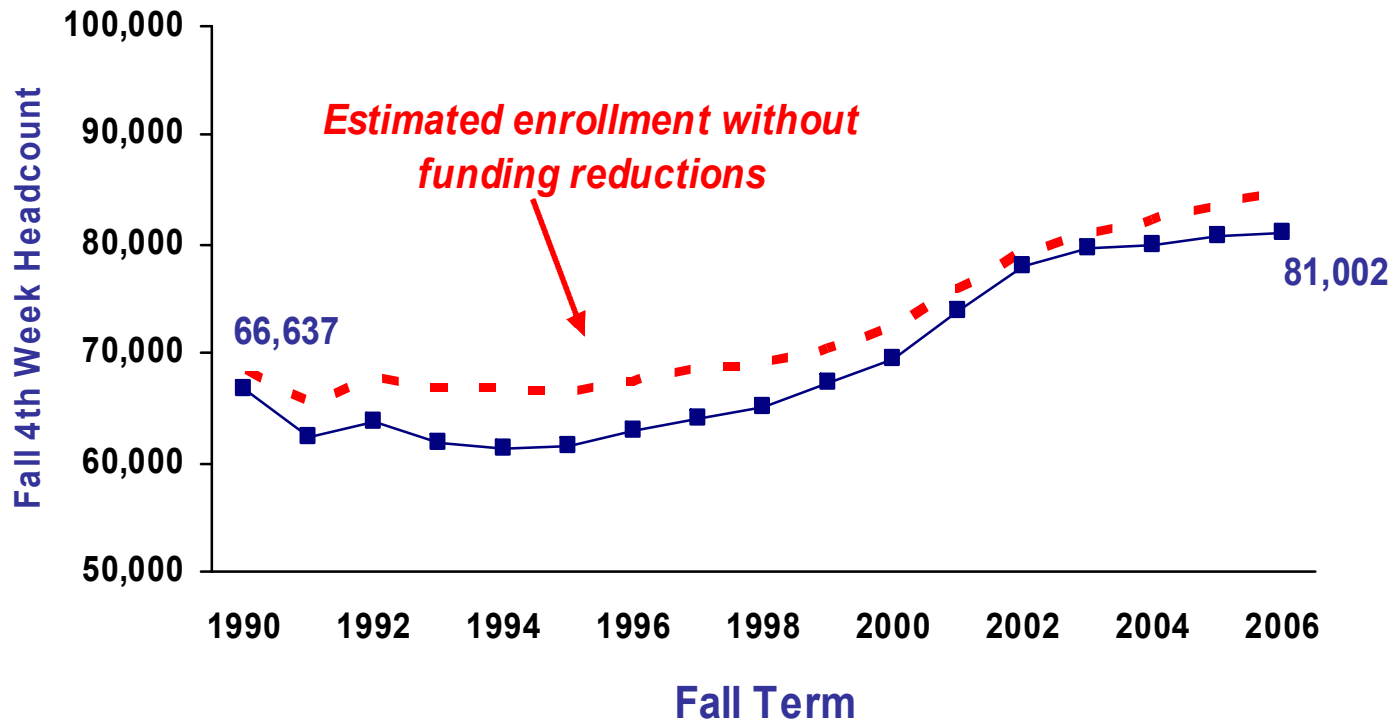
State and Student Share of Costs



Other costs (primarily federal cost recovery) were 8% 1999 to 2003, increasing to 9% in 2003-05 and 10% in 2005-07.

Source: OUS Budget Office.

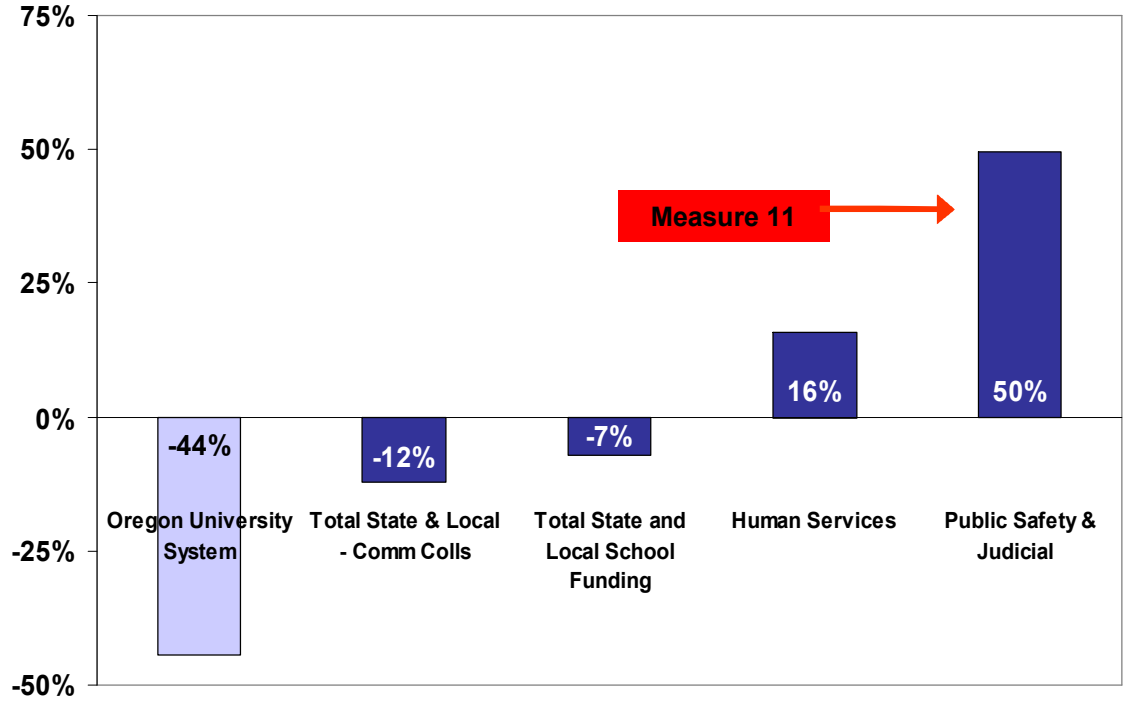
A Lost Generation of Oregon Students



Source: OUS Strategic Programs and Planning.

State and Local Appropriations per Capita: Oregon State Agencies 1989-91 to 2005-07

Change in State and Local Spending per Capita 1989-91 to 2005-07 (Constant Dollars)

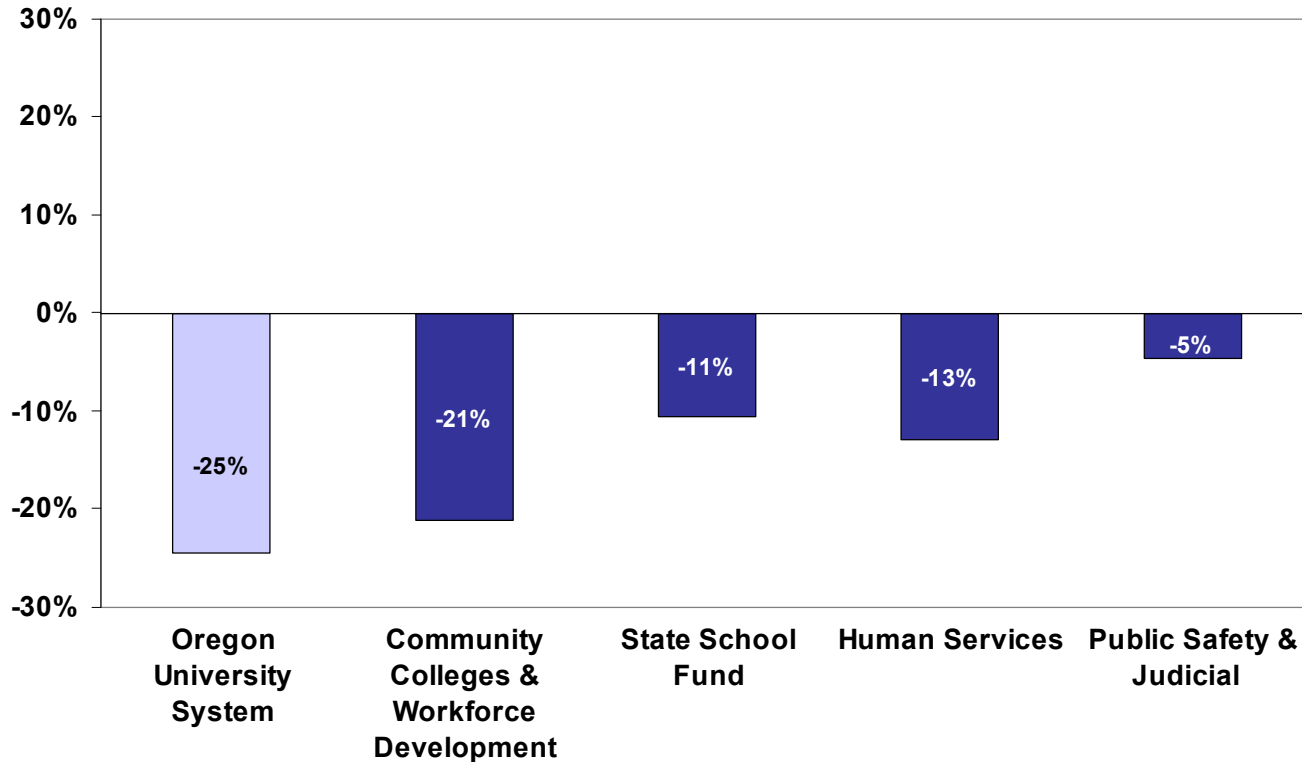


NOTE: Includes local property tax revenue for schools and community colleges.

Sources: (1) Oregon Department of Administrative Services, Budget and Management; (2) Legislative Fiscal Office; (3) Paso Seguro Consulting.

OUS also hardest hit more recently

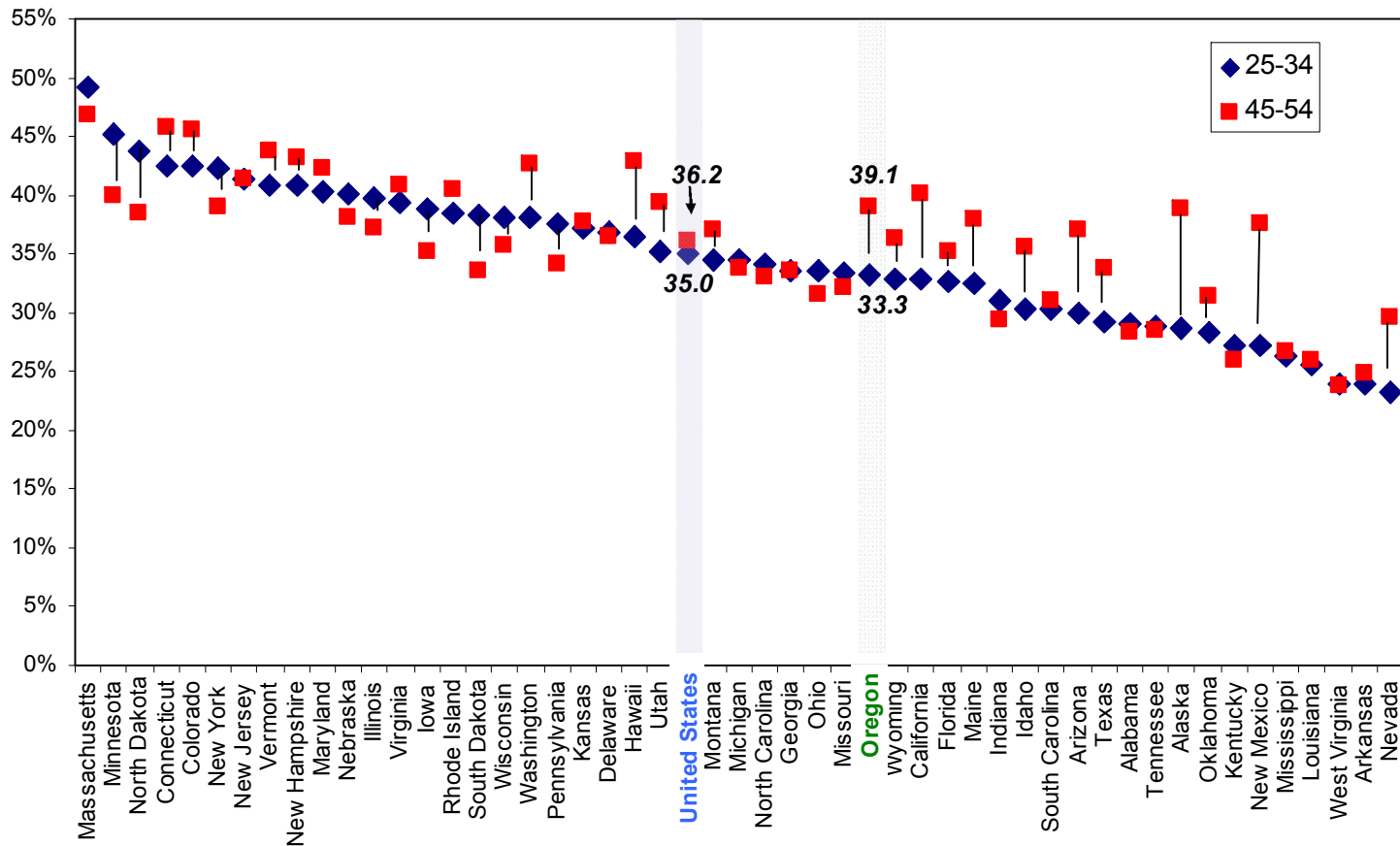
**Change in State General Fund and Lottery Spending per Capita
2001-03 to 2005-07 (Constant Dollars)**



Sources: (1) Oregon Department of Administrative Services, Budget and Management; (2) Legislative Fiscal Office; (3) Paso Seguro Consulting.

Differences in College Attainment Between Young and Older Adults in the 50 States, 2000

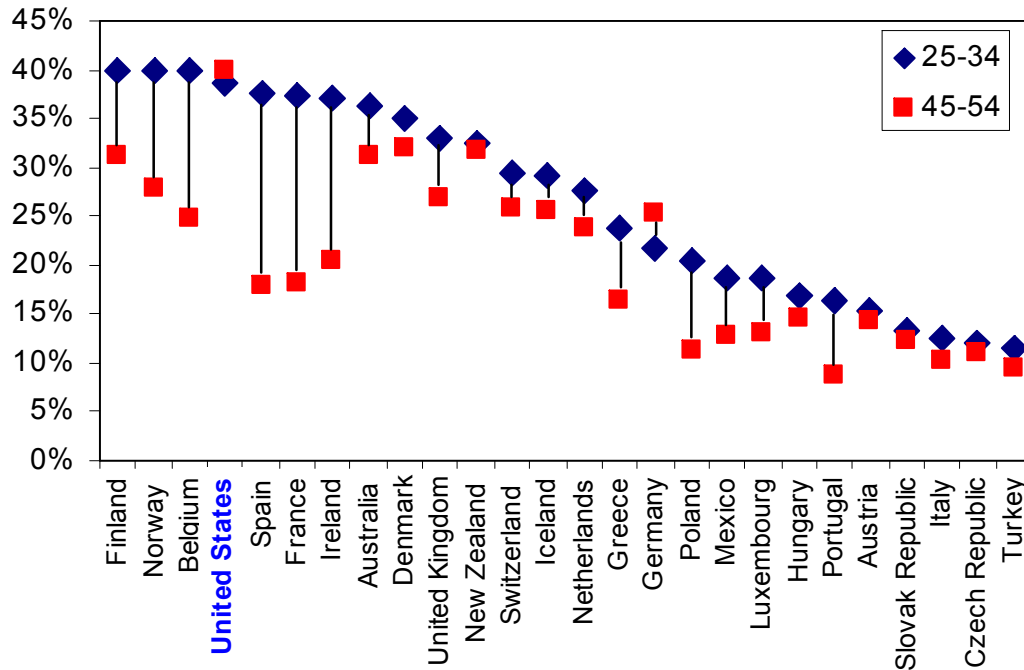
Percent of Adults with Associate Degree or Higher



Sources: (1) U.S. Census Bureau, American Community Survey; (2) National Center for Higher Education Management Systems (NCHEMS).

Differences in College Attainment Between Young and Older Adults in OECD Countries, 2000

Percent of Adults with Associate Degree or Higher



Sources: (1) Organisation for Economic Cooperation and Development; (2) National Center for Higher Education Management Systems (NCHEMS).