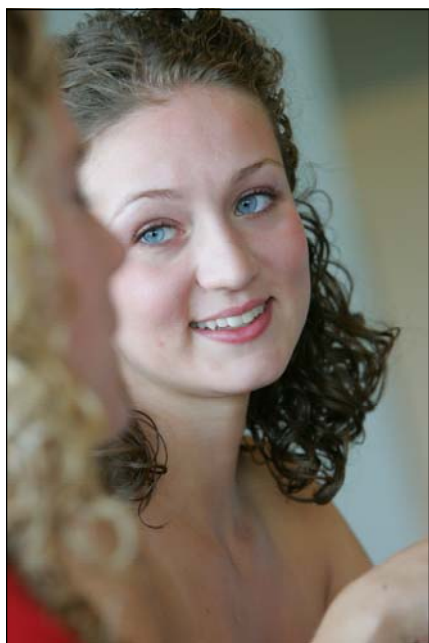


# Regional Universities

Eastern Oregon University • Oregon Institute of Technology • Southern Oregon University • Western Oregon University



**EOU: La Grande**



**WOU: Monmouth**



## MEETING STUDENTS

**SOU: Ashland**



**OIT: Klamath Falls**

## WHERE THEY LIVE

### Eastern Oregon University Mission

EOU guides student inquiry through integrated, high-quality liberal arts and professional programs that lead to responsible and reflective action in a diverse and interconnected world.

As an educational, cultural and scholarly center, EOU connects the rural regions of Oregon to a wider world. Our beautiful setting and small size enhance the personal attention our students receive, while partnerships with colleges, universities, agencies and communities add to the educational possibilities of our region and state.

### Oregon Institute of Technology Mission

Oregon Institute of Technology, the only public institute of technology in the Pacific Northwest, provides degree programs in engineering and health

technologies, management, communications and applied sciences that prepare students to be effective participants in their professional, public and international communities. Six objectives are central to our mission:

1. Provide degree programs that enable graduates to obtain the knowledge and skills necessary for immediate employment.
2. Enable students to be effective communicators, responsible citizens and lifelong learners by assisting them in the development of critical thinking and problem solving skills, and ethical and cultural awareness.
3. Offer continuing and distance education and advanced professional studies to meet the emerging needs of today's citizens.



4. Provide informational and technical expertise to regional, state, national and global publics in applied research.

5. Develop and maintain partnerships with public and private institutions, business and industry, and government agencies to ensure quality programs that meet the needs of students and the organizations that employ them.

6. Provide statewide access to address the needs of the Oregon workforce.

### Southern Oregon University Mission

Southern Oregon University is a contemporary public liberal arts and sciences university. It provides access to opportunities for personal, intellectual, and professional growth through

quality education and scholarship. The University is a vital partner in the healthy development of its region and state in association with civic, national, and international engagements. It is Oregon's Center of Excellence in the Fine and Performing Arts.

### Western Oregon University Mission

Western Oregon University is a comprehensive university that creates personalized learning opportunities, supports the advancement of knowledge for the public good and maximizes individual and professional development. Our environment is open to the exchange of ideas, where discovery, creativity and critical thinking flourish, and students succeed.

# Regional Universities

Eastern Oregon University • Oregon Institute of Technology • Southern Oregon University • Western Oregon University

## Student Enrollment by County

County	EOU	OIT	SOU	WOU
Baker	152	4	8	6
Benton	17	26	40	132
Clackamas	136	115	163	336
Clatsop	30	20	32	59
Columbia	28	22	33	42
Coos	73	55	65	81
Crook	25	53	6	13
Curry	14	14	41	36
Deschutes	86	175	113	102
Douglas	32	67	110	90
Gilliam	13	2	2	3
Grant	78	4	9	5
Harney	40	6	7	8
Hood River	15	6	9	18
Jackson	35	210	1,878	59
Jefferson	12	17	8	14
Josephine	20	68	336	46
Klamath	36	911	132	52
Lake	17	21	13	10
Lane	57	102	147	215
Lincoln	8	10	22	67
Linn	19	45	30	245
Malheur	116	3	5	23
Marion	58	96	107	859
Morrow	49	9	4	9
Multnomah	237	206	326	336
Polk	12	14	17	404
Sherman	6	1	3	7
Tillamook	11	13	8	36
Umatilla	228	31	17	44
Union	574	36	15	17
Wallowa	59	2	6	6
Wasco	33	16	15	21
Washington	95	140	148	471
Wheeler	8	2	0	2
Yamhill	12	33	51	214

## Eastern Oregon University

Eastern Oregon University is located in La Grande, Ore., and serves as a regional center for education, culture and scholarship. Close to 25,000 people call Union County home and approximately 12,500 people live in the city. The community is a jumping-off point for many outdoor activities including skiing and hiking in the nearby Elkhorn Mountains, mountain biking along the Oregon Trail and fishing for trout and steelhead on the Wallowa River. The closest major cities are Portland, 260 miles, Boise, Idaho, 174 miles, and Spokane, Wash., 255 miles.

EOU plays a vital role providing greater access to higher education in rural areas of the state. The small size of the campus and supportive learning community enhance the quality instruction and personal attention students receive. A broad choice of liberal arts, sciences and professional programs

are available, all taught by dedicated faculty.

Regional centers and off-site programs extend exceptional learning opportunities to students from nearly every part of the globe through the university's nationally recognized distance education program.

Unique among most public colleges and universities in the U.S., all undergraduate students pay the same in-state tuition.

Students represent many ethnic and cultural backgrounds and EOU is committed to fostering a rich diversity in the university community. By participating in undergraduate research, internships and cooperative opportunities, international experiences and community service, all graduates are well prepared to succeed in today's global environment.

For more information about EOU and La Grande, please visit [www.eou.edu/visitor/](http://www.eou.edu/visitor/).

## Oregon Institute of Technology

Oregon Institute of Technology partners with business and industry leaders to ensure our academic programs regularly adapt to new technologies and workforce demands. This real-world focus gives our graduates a competitive edge: 96% are employed or in graduate school within six months and, year after year, our bachelor's degree graduates command starting salaries that surpass those of their peers at all other public universities in the state.

Our applied approach to teaching is the main reason so many employers seek OIT alumni. From medical imaging to civil engineering to software design, our students have amazing opportunities to apply what they learn in lab-based classes, capstone projects, externships and cooperative-

education experiences. And in every program, major studies are underscored by a general-education core that broadens students' understanding of the world and teaches them to communicate effectively, solve problems and think for themselves.

OIT is proud of its numerous partnerships with academic and industry institutions throughout Oregon and the Pacific Northwest.

Established in 1947, OIT offers associate's, bachelor's and master's degree programs at our main campus in Klamath Falls. We also offer convenient degree-completion programs, geared toward working adults, at two Portland locations and through Distance Education.

For more information about OIT, please visit [www.oit.edu](http://www.oit.edu).

## Southern Oregon University

The role of Southern Oregon University is to provide excellent study programs in the liberal arts, select professional programs, and research and service programs. Degrees are offered at the bachelor's and master's levels.

SOU places strong emphasis on teaching, student engagement and scholarship. The University's student-to-faculty ratio of 19:1 is ideal for undergraduate instruction.

Nearly 90 percent of SOU's approximately 5,500 students are undergraduates, distributed across 35 baccalaureate degree programs ranging from the arts to computer science. More than 10 percent are pursuing graduate work in one of five areas of study.

The student body represents a variety of cultures. In addition to students predominately from the western U.S., more than 140 international stu-

dents from 32 countries are enrolled at SOU. Alumni are located in 49 states, the District of Columbia, Guam, the Virgin Islands, and many other countries. SOU's international programs also offer study and work exchanges in various parts of the world.

SOU is located in Ashland at the base of the Siskiyou Mountains in the Rogue Valley. With a population of 20,000, the town is surrounded by forests, mountains, lakes and rivers, which provide a spectacular setting for outdoor sports and ecological studies. Ashland is also home to the nation's only Fish and Wildlife Forensics Laboratory.

The University was recently named by the New York Times one of 20 "hidden gems" in higher education.

For more information about SOU, Ashland and the Rogue Valley, please visit [www.sou.edu](http://www.sou.edu).

## Western Oregon University

Western Oregon University is committed to changing lives, strengthening communities and transforming our world.

Located in the Monmouth-Independence area, the heart of Oregon's lush Willamette Valley, WOU is about 20 minutes from Salem, the state's capital and about 75 minutes from Portland, the state's cultural hub.

Our student body of about 4,500 undergraduates and 400 graduate students enjoys a vibrant and close-knit intellectual community comparable to the environment in a small liberal arts college. As a public-serving institution dedicated to strengthening our region and Oregon, WOU is home to the nationally-renowned Teaching Research Institute, the Regional Resource Center on Deafness and the Rainbow Dance Theatre.

In addition to teaching excellence, WOU's faculty members are engaged in wide-ranging scholarship as well as community-based projects, including

many faculty-student collaborations. Our picturesque, award-winning campus blends welcoming traditional features with 21st century convenience, including many multimedia classrooms, extensive wireless web access and a state-of-the-art library.

WOU, the oldest institution in the Oregon University System, has continued to adapt and transform itself to respond to the needs of society and our changing world. From its origins as a normal school, WOU grew to become a nationally recognized leader in teacher preparation.

In the seventies, WOU expanded its offerings with broad-based liberal education programs. Since then, the university has continued to emerge as a leading comprehensive public liberal arts institution, with approximately two-thirds of its students in the College of Liberal Arts and Sciences and the rest in the College of Education.

For more information about WOU and Monmouth, please visit [www.wou.edu](http://www.wou.edu).