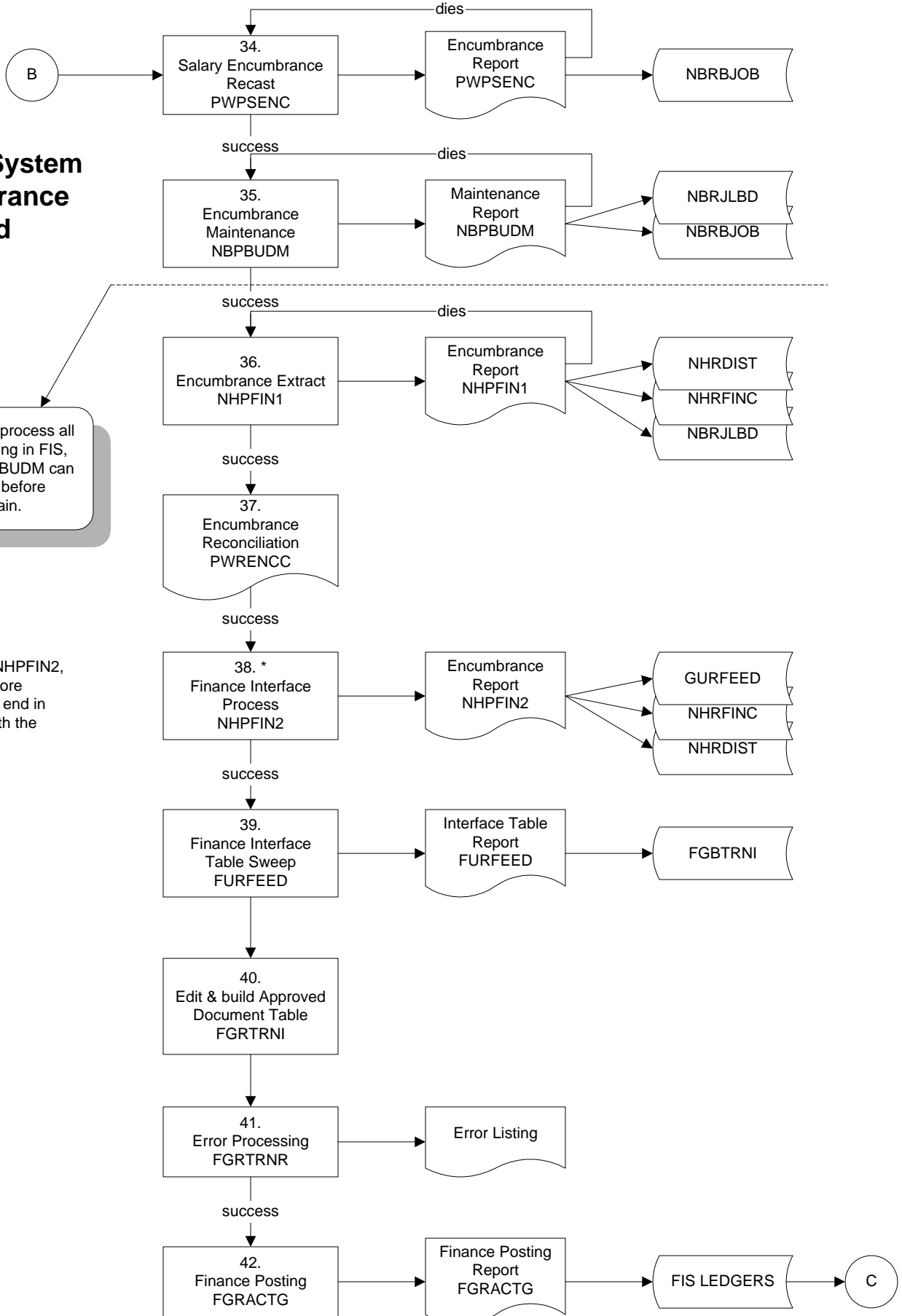


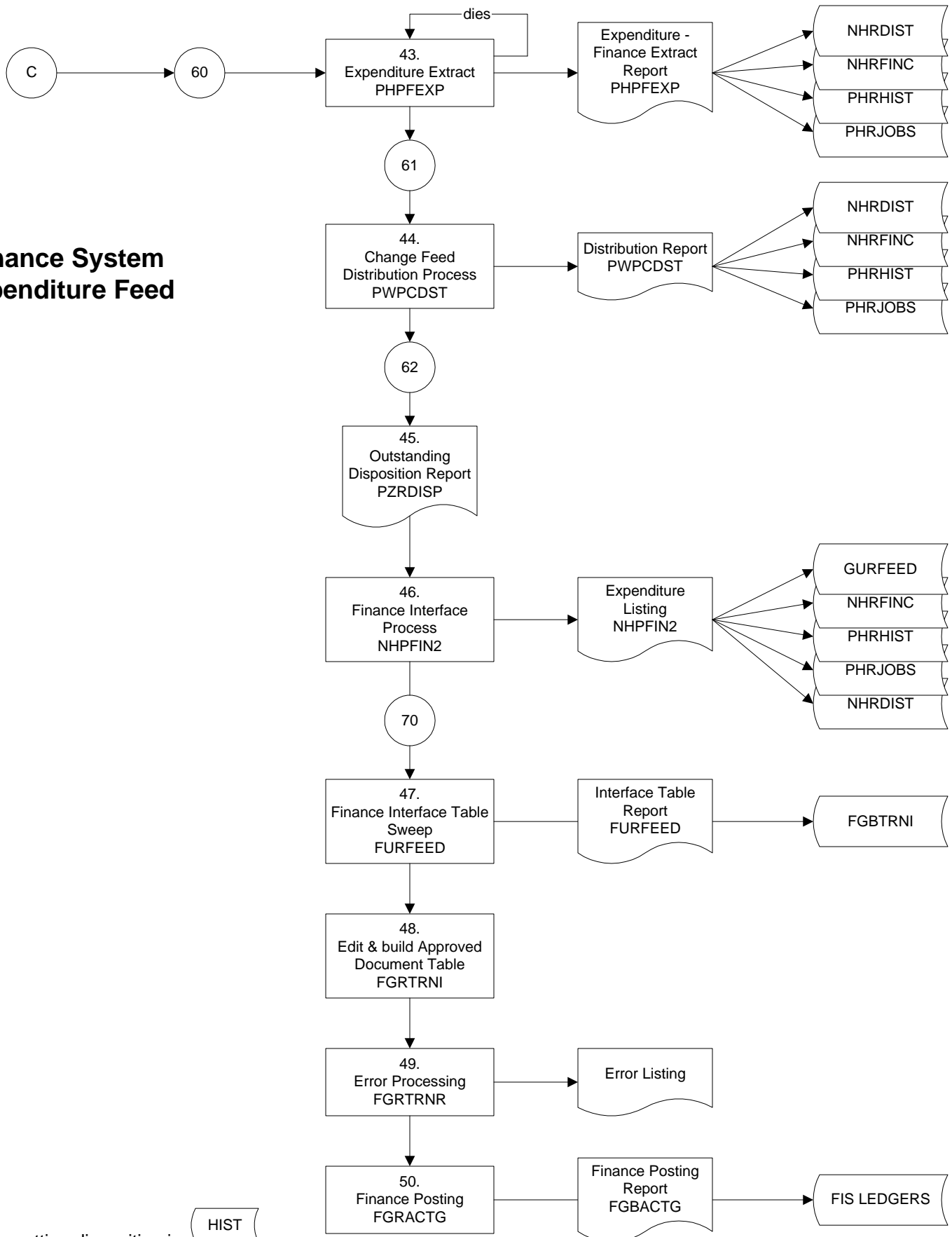
Finance System Encumbrance Feed



Once NHPFIN1 runs process all the way through posting in FIS, PWPSENC and NBPBUDM can be run multiple times before running NHPFIN1 again.

*Process #38, NHPFIN2, must be run before calendar month end in order to post with the correct period.

Finance System Expenditure Feed



= setting disposition in

