

OREGON UNIVERSITY SYSTEM
2004 FACT BOOK

System Organization

Oregon University System Overview

Throughout 2004, significant leadership and structural changes took place within the Oregon University System that positioned the organization to help more Oregonians access a postsecondary education in the next and future biennia.

With a **vision for change and reinvestment in the postsecondary education system**, the Governor appointed seven new State Board of Higher Education members. Harnessing the momentum of a re-energized mission and the Governor's goals for expanding access and affordability, the Board created four new Working Groups as its first action: Access and Affordability; Excellence in Delivery and Productivity; Academic Excellence and Economic Development; and the Chancellor's Office Review. Together these Groups have worked hard, and already accomplished much, to establish and implement objectives related to:

1. **Making college more affordable** in Oregon through a redesigned and expanded state grant program, and a proposal for a long-term need-based endowment;
2. **Enrolling more students** in the public two- and four-year colleges and universities by eliminating barriers that inhibit access, transfer of credits, student retention, and completion of a degree within a reasonable period of time;
3. **Better alignment of the economic needs of Oregon with top academic research and ventures** that exemplify excellence and hold potential for economic development; and
4. **Realigning the focus of the Chancellor's Office** with the mission and work objectives of the Board.

Moving forward, the Chancellor's Office will focus on the development and implementation of policy and advocacy for postsecondary education in Oregon, management reporting and control systems, planning and analysis, communications and government relations, and fulfillment of statutory functions. Campuses have been provided with greater autonomy and flexibility, along with the requisite control measures that ensure accountability.

Some former Chancellor's Office functions have been transferred to particular campuses to manage for the System, such as Information Technology Services now managed by OSU; the operation of the Southwestern Oregon University Center, now managed by EOU; and the Oregon Center for Advanced Technical Education (OCATE), now managed by PSU. The new Provosts' Council, made up of academic vice presidents of the OUS campuses, completes due diligence and formal review of new academic degree and certificate program requests, and makes recommendations to the Board. The Council replaces a function formerly carried out by the Academic Affairs division of the Chancellor's Office, which was eliminated during the restructuring.

OUS Campuses and Centers

Excellence is exemplified in the accomplishments of our students and faculty, in the quality of our academic instruction, through innovations in research and the scope of public service at our seven diverse, high quality institutions: Eastern Oregon University, Oregon Institute of Technology, Oregon State University, Portland State University, Southern Oregon University, University of Oregon, and Western Oregon University. Dedicated top faculty, students and staff joined to effect excellence in numerous programs and in diverse disciplines, becoming more widely recognized nationally and internationally as leaders in specialized fields in the arts, sciences, and professions.

Mission Statement

The mission of the Oregon University System is to:

- Provide affordable access to high-quality postsecondary education for all qualified Oregonians;
- Improve and enrich continuously the lives of the people in the state, the nation, and the world through the pursuit and application of ever-deeper understandings in the sciences, the social sciences, the humanities, the arts, and the professions;
- Infuse learning with the vigorous pursuit of free and open inquiry to assure that Oregon has the capacity to respond effectively to social, economic, and environmental challenges and opportunities.

Eastern Oregon University (EOU) in La Grande serves its regional mission through programs in the liberal arts; professional programs in business, education, and community service; and cooperative programs in agriculture and nursing.

Oregon Institute of Technology (OIT) in Klamath Falls, the Northwest's only polytechnic institution, serves the state with programs in business, engineering and health technologies, and a cooperative program in nursing.

Oregon State University (OSU) in Corvallis is a land-, space-, and sea-grant university with programs in the liberal arts and sciences and professional programs in agricultural sciences, business, education, engineering, forestry, health and human sciences, oceanography, pharmacy, and veterinary medicine. **OSU-Cascades Campus** in Bend, successor to the Central Oregon University Center, opened in fall 2001 as a state-of-the-art branch campus on the site of its major partner Central Oregon Community College (COCC) in Bend. OSU and its collaborating public and private program providers offer a wide array of student services and a growing number of degree programs in arts and sciences, business, education, natural resources, and recreation.

Portland State University (PSU) in downtown Portland is an urban university offering liberal arts and sciences programs and professional programs in business, education, engineering, health, performing arts, social work, and urban and public affairs.

Southern Oregon University (SOU) in Ashland provides liberal arts and sciences programs; professional programs in business, education, and performing arts; and a cooperative program in nursing.

The University of Oregon (UO) in Eugene is a major liberal arts and sciences university with professional programs in architecture and allied arts, business, education, journalism, law, music and performing arts, and planning and public policy.

Western Oregon University (WOU) in Monmouth provides programs in liberal arts and sciences and professional programs in education, business, and public services.

The Oregon Health and Science University (OHSU) in Portland, an affiliated institution, is a major center for instruction, research, and public service in the fields of medicine, dentistry, nursing, and related health programs. Science and engineering programs are offered through a merger with Oregon Graduate Institute (OGI).

University Centers

The CAPITAL Center in Beaverton and the Southwestern Oregon University Center in Coos Bay are innovative partnerships that include multiple institutions and educational sectors. They provide access to higher education services for adult career enhancement and Oregon's economic development. In addition, there are numerous collaborations and outreach centers (not shown here) established by individual OUS institutions, typically with community college partners, to increase educational opportunities across the state. Currently there are a total of 23 dual enrollment programs and articulation agreements between OUS institutions and one or more of Oregon's 17 community colleges.

The CAPITAL Center is a cooperative venture among OUS, Portland Community College, Hillsboro and Beaverton School Districts, and industry. This Center offers credit and non-credit programs in business, management, and engineering technology to help meet regional workforce needs. The Southwestern Oregon University Center (SWOCC) is another OUS/community college collaboration that offers a selection of undergraduate and graduate degree programs on the campus of Southwestern Oregon Community College (SWOCC) in Coos Bay.

Top Accomplishments at Oregon University System Campuses, 2003-04

Eastern Oregon University

- Welcomed its 10th President, Khosrow Fatemi, in May 2004
- Celebrated its 75th anniversary, and 25 years as a distance education leader in the state and nation
- Ranked #2 in the nation for quality and value in *Consumer Digest*
- EOU and Portland General Electric Corporate University were awarded the 2004 Business Education Compact Higher Education Achievement Award, recognizing their ongoing, productive partnership to increase student achievement, enhance applied learning and prepare Oregon's workforce
- Signed international agreements with Montpellier Graduate School of Management in France, and Universidad Automoma del Sur in Chile

Oregon Institute of Technology

- The Hustlin' Owls won the NAIA Division II National Basketball Title and the tournament Sportsmanship Award
- Hosted the 2004 American Civil Engineers Pacific Northwest Regional Student Conference taking first place in two engineering competitions and ending second overall
- Two OIT professors were awarded Intel Oregon – OUS Engineering and Computer Science Curriculum Fellowships
- Senior Brian Mason was one of 12 recipients of the 2004 Morris K. Udall Native American Congressional Summer Internship
- John W. Lund, professor emeritus of Civil Engineering and Director of the Geo-Heat Center, was named President of the International Geothermal Association, a 65-country member UN-affiliated organization that will host the 2005 World Geothermal Congress in Turkey

Oregon State University

- Welcomed its 14th President, Edward Ray, in August 2003
- Faculty exceeded by \$20 million the university's record for attracting research funds, bringing in \$177 million, including multi-year and foundation awards
- A record enrollment of 19,000 students was reached in fall 2003-04
- New construction enhanced campus facilities including: \$20 million expansion of Dixon Recreation Center; \$19 million renovation of Weatherford Hall; plus ground-breaking on the Kelley Engineering Center, and expansion of Magruder Hall and Reser Stadium
- After a two-year campus-wide effort entailing hundreds of volunteers, OSU adopted a new strategic plan to guide its curricular, research, and fundraising efforts

Portland State University

- Alumnus Fariborz Maseeh contributed \$8 million to the College of Engineering and Computer Science, PSU's largest donation to-date
- Jun Jiao, assistant professor of physics and co-director of PSU's Center for Nanoscience and Nanotechnology, was awarded a \$400,000 National Science Foundation Career Award to support research into carbon nanotubes
- Several facilities' milestones marked the year: the dedication of the Native American Student and Community Center; the opening of the "green" Epler Hall; and completion of the Student Health and Counseling Center, among others
- Gained approval for a BA/BS in Black Studies; and an MS in Materials Science and Engineering
- Had a record number of graduates for 2003-04 of 4,300

Southern Oregon University

- The State Board of Higher Education unanimously approved SOU's request to name the University Library "The Lenn and Dixie Hannon Library" in recognition of the unusually meritorious contributions to Oregon made by Senator Lenn and Dixie Hannon; the groundbreaking ceremony took place in early March
- *The Raider*, SOU's admissions newsletter, and the University's Viewbook, took second place in the 22nd Annual CASE District VIII Juried Awards Competition, out of more than 400 entries
- Music Department faculty Todd Barton and Kirby Shaw won an American Society of Composers, Authors and Publishers Award
- Business major Jason Meilicke received *The Wall Street Journal's* 2004 Student Achievement Award, which recognizes outstanding college students around the U.S.
- SOU alumnus Jason Kuhlman won the Disneyland Teacher Award

University of Oregon

- Associate professor of psychology, Michael Anderson, located a mechanism in the brain that blocks unwanted memories, the first time a researcher has shown a neurobiological basis for memory repression
- Charles H. Lundquist College of Business opened a new "green" building that is a monument to maximizing available resources
- Alumnus Dave Petrone and his wife Nancy contributed a \$2.5 million gift to provide students scholarships, new classrooms, and support other campus efforts
- Received a \$510,500 grant from the MJ Murdock Charitable Trust for the Center for Optics to reach new levels in their quest to manipulate light and matter at the atomic level
- Student Anna Cavender was named North America's 2004 Outstanding Female Undergraduate in Computer Science and Engineering by the Computing Research Association

Western Oregon University

- The College of Education celebrated 50 consecutive years of accreditation by the National Council for Accreditation of Teacher Education
- Co-sponsored a national summer conference on emerging best practices in teaching work samples with the American Association of Colleges for Teacher Education (AACTE) and the Education Commission of the States, representing a key endorsement of WOU
- The College of Education co-published *Connecting Teaching and Learning*, a handbook on teacher work sample methodology, with the AACTE and the Carnegie Corporation
- Faculty and staff were engaged in sponsored research and service projects totaling nearly \$8 million.
- Hosted the Central Western Oregon Science Exposition, one of the most rigorous student science and humanities meetings in the state, at which Oregon middle and high school students competed for prizes in science, technology, math, computer science and the humanities

Chronological History of the Institutions of the Oregon University System

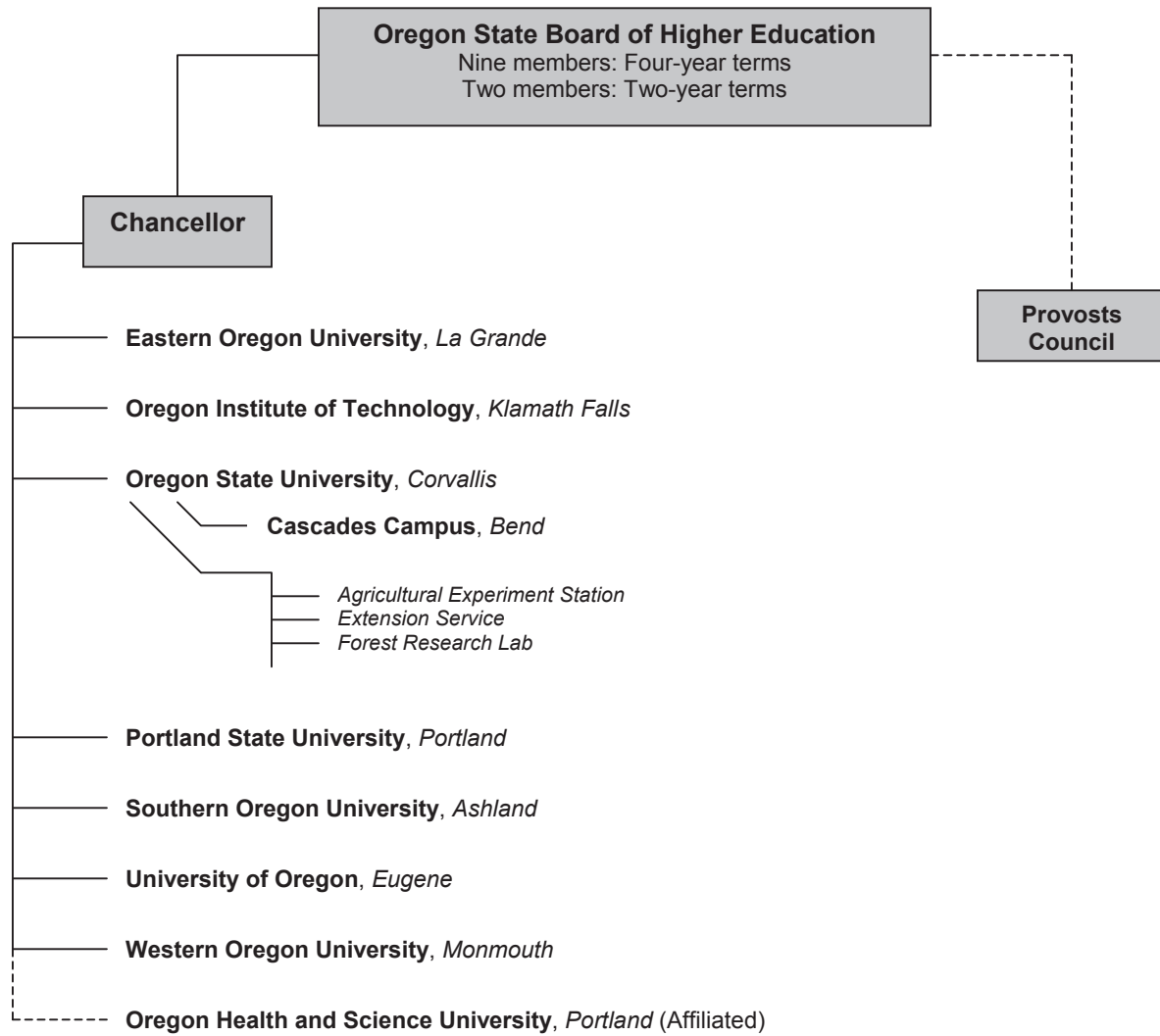
1856	Monmouth University chartered by Territorial Legislature
1858	Precursor to OSU, Corvallis College, established and incorporated as an academy by Methodist Episcopal Church, South
1867	Medical education begun at Willamette University in Salem; moved to Portland in 1877
1868	Agricultural College of the State of Oregon designated by Legislature under the Morrill Act and legislature approved attaching it to privately owned Corvallis College
1869	Precursor to Southern Oregon Normal School founded in Ashland by Methodist Episcopal Church in Ashland
1872	University of the State of Oregon created in Eugene
1882	Oregon State Normal Schools officially designated with state support
1887	University of Oregon Board of Regents grant charter for a University of Oregon Medical School to begin operation in northwest Portland
1909	Oregon State Normal School deprived of state support; restored in 1911 by vote of people
1913	Willamette University medical department merged with the University of Oregon Medical School in Portland
1920	Public health nursing program established through University of Oregon's then Portland Division of the School of Sociology
1925	Southern Oregon State Normal School re-established and funded by Oregon legislature
1929	Legislature submits vote to people to establish Eastern Oregon Normal School to serve vast region east of mountains
1929	State Board of Higher Education established
1932	Department of Nursing Education established
1939	The three state normal schools designated Colleges of Education by state
1945	School of Dentistry became University of Oregon Dental School
1946	Vanport Extension Center established to accommodate post war student demand, offering two year general college work, financed principally from student tuition
1949	Emergency Board establishes a vocational rehabilitation school for WWII veterans with classes under direction of Board of Education in Klamath Falls
1949	Legislature authorizes, directs Board of Higher Education to establish "within the borders of Multnomah County a permanent lower division daytime extension center to be administered by the General Extension Division of the State System of Higher Education." Moved from Vanport to the Lincoln High School building and renamed Portland State Extension Center

continued . . .

Chronological History of the Institutions of the Oregon University System *(continued)*

- 1953 Legislature approves additions to the Portland State Extension Center to include four-year undergraduate programs. Extension Center not authorized to award degrees to students who completed the four-year study programs; it was necessary for students to apply for their degrees to the universities or state colleges in the State System.
- 1954 Board requests a study of the prospects for a four-year college in Portland
- 1955 Bill introduced and approved establishing Portland State College as part of the State System
- 1956 Southern Oregon College of Education becomes Southern Oregon College; Eastern Oregon College of Education becomes Eastern Oregon College
- 1957 Board of Education authorizes Oregon Technical Institute to award two-year associate degrees
- 1959 Responsibility for governance of Oregon Technical Institute transferred to Board of Higher Education
- 1969 Legislature changes name of Portland State College to Portland State University
- 1973 Eastern Oregon College becomes Eastern Oregon State College; Oregon Technical Institute becomes Oregon Institute of Technology
- 1974 State Board of Higher Education authorizes formation of the University of Oregon Health Sciences Center including Schools of Nursing, Medicine, and Dentistry
- 1975 Southern Oregon College becomes Southern Oregon State College
- 1981 Oregon College of Education becomes Western Oregon State College
- Oregon State Board of Higher Education authorizes name change of University of Oregon Health Sciences Center to Oregon Health Sciences University. Legislation abolishes Health Sciences Center Advisory Council. Complementary legislation designates Board of Higher Education as governing body.
- 1995 Oregon Health Sciences University becomes an affiliate of the State System of Higher Education as a Public Corporation via Senate Bill 2
- 1997 Western Oregon State College becomes Western Oregon University
Southern Oregon State College becomes Southern Oregon University
Eastern Oregon State College becomes Eastern Oregon University
- 1998 Oregon State System of Higher Education is renamed Oregon University System
- 2001 Oregon Health Sciences University merges with Oregon Graduate Institute to create Oregon Health and Science University
- Oregon State University - Cascades Campus in Bend opens in the Fall as a successor to the Central Oregon University Center

Oregon University System Administrative Organization



State Board of Higher Education Board Roster 2004

<u><i>Member</i></u>	<u><i>Term Expires</i></u>
Henry Lorenzen, President	2007
Kirby Dyess, Vice President	2008
Donald Blair	2008
Bridget Burns	2005
Adriana Mendoza	2005
Tim Nesbitt	2008
Geri Richmond	2004
Gretchen Schuette	2008
Howard Sohn	2005
John von Schlegell	2005
Tony Van Vliet	2005

Board Standing Committees & Working Groups 2004

Executive

- Henry Lorenzen, President
- Kirby Dyess, Vice President
- Donald Blair
- Geri Richmond
- Gretchen Schuette

Finance/Budget/Audit/Personnel/Real Estate

- Donald Blair, Chair
- John von Schlegell
- Henry Lorenzen

Chancellor's Office Review

- Geri Richmond, Chair
- Donald Blair
- Henry Lorenzen
- Gretchen Schuette

Representatives to the Education Joint Boards Working Group

- Bridget Burns
- Howard Sohn
- Tony Van Vliet

Representative to OHSU Board

- Kirby Dyess

Representative to Oregon College Savings Board

- Tim Nesbitt

Academic Programs

- TBA

Oregon Council on Knowledge and Economic Development

- TBA

Board Members on Academic Excellence & Economic Development Working Group

- Kirby Dyess, Chair
- John von Schlegell

Board Members on Access & Affordability Working Group

- Tim Nesbitt, Co-Chair
- Bridget Burns
- Howard Sohn

Board Members on Excellence in Delivery & Productivity Working Group

- Gretchen Schuette, Chair
- Adriana Mendoza
- Geri Richmond
- Tony Van Vliet

Oregon University System Council of University Presidents

Daniel O. Bernstine

Portland State University
PO Box 751
Portland, OR 97207-0751
503 725-4419
FAX: 503 725-4499
bernstined@pdx.edu

Philip Conn

Western Oregon University
345 N. Monmouth Avenue
Monmouth, OR 97361-1394
503 838-8215
FAX: 503 838-8600
pconn@wou.edu

Khosrow Fatemi

Eastern Oregon University
One University Boulevard
La Grande, OR 97850-2899
541 962-3512
FAX: 541 962-3113
kfatemi@eou.edu

Martha Anne Dow

Oregon Institute of Technology
3201 Campus Drive
Klamath Falls, OR 97601-8801
541 885-1100
FAX: 541 885-1101
down@oit.edu

Dave Frohnmayr

University of Oregon
1226 University of Oregon
Eugene, OR 97403-1226
541 346-3036
FAX: 541 346-3017
dfrohn@oregon.uoregon.edu

Elisabeth Zinser

Southern Oregon University
1250 Siskiyou Boulevard
Ashland, OR 97520-5031
541 552-6111
FAX: 541 552-6337
zinsere@sou.edu

Edward Ray

Oregon State University
600 Kerr Administration Building
Corvallis, OR 97331-2128
541 737-4133
FAX: 541 737-3033
ed.ray@oregonstate.edu

Affiliated:

Peter O. Kohler

Oregon Health and Science University
3181 SW Sam Jackson Park Road
Portland, OR 97201-8098
503 494-8252
FAX: 503 494-8935
kohlerp@ohsu.edu

Acting Chancellor:

George Pernsteiner

Oregon University System
PO Box 3175
Eugene, OR 97403-0175
541 346-5794
FAX: 541 346-5764
george_ernsteiner@ous.edu

Oregon University System Distance Education Networks

Oregon Access Network (OAN)

The Oregon Access Network (OAN) is a two-way interactive videoconferencing network that links over 300 sites throughout Oregon. One of the nation's first comprehensive IP-based video networks; OAN includes over 265 high schools, 20 Education Service Districts (ESDs), and provides connections to 30 community college and higher education sites. Videoconferencing units are connected through dedicated, frame-relay video circuits or through aggregated video and data broadband connections. A centralized hub operated by the Oregon Department of Administrative Services provides bridging services for multi-point conferences and scheduling software to manage use of the system. OAN is used for administrative meetings, teacher training and professional development, and K-20 distance education courses and programs. Final report (3/02) on Oregon Senate Bill 622 and the Implementation of the Oregon Access Network.

OWEN (The Oregon WidE area Network)

OWEN is a collaboration among three state computer networks to realize cost savings by sharing bandwidth and access to Internet providers. The three networks include the OUS NERO network, the Oregon Department of Administrative Services (DAS) network, and OPEN, the state's K-12 network. OWEN provides broadband intrastate services among participants and redundant broadband access to commercial Internet providers. The network provides online access to courses, research materials and other educational services. OWEN's K-20 collaboration played a key role in Oregon becoming one of the early participants in the national Internet2 K-20 Initiative. The goal of the Internet2 K-20 Initiative is to bring advanced networks and services directly to innovators across all education sectors.

OUS Videoconferencing Services (InTelNet Operation Network Center)

OUS operates a videoconferencing system for administrative and distance education use. In 2001 OUS upgraded the Lucent Multipoint Conferencing Unit (MCU) to handle both ISDN-based (H.320) and IP-based (H.323) videoconferencing units. The OUS hub connects OUS institutions and regional education centers with community college and K-12 sites within Oregon and with a wide variety of videoconferencing units worldwide.

Oregon WIN (Oregon Wireless Instructional Network)

Oregon WIN is a consortium of universities and community colleges that operates an Instructional Television Fixed Service (ITFS) network throughout the Willamette Valley. The "last mile" wireless network provides video programming directly to homes, businesses, schools and government offices from Eugene to Portland. Oregon WIN operates in partnership with Sprint Corporation. Oregon WIN leases excess ITFS spectrum for commercial use in exchange for the construction and operation of the Oregon WIN educational network.

Internet2

Internet2 (I2) is the leading next-generation Internet for higher education and research. Over 170 U.S. research universities connect to I2 and a growing number of counterpart international networks via high-speed circuits. Connection to I2 is via Abilene (runs over Qwest facilities) or the legacy vBNS (runs over MCI facilities). Sites can connect to Abilene or vBNS directly, or share a circuit via an aggregation point known as a Gigapop. UO, OSU, EOU, OIT, SOU, and WOU all connect via the Oregon Gigapop run by UO, which connects to Abilene via an OC3 to Denver, CO, and an OC3 to Sacramento, CA. In summer 2000, PSU, OGI, and OHSU brought up the Portland Research and Educational Network (PREN), which has OC12 connectivity via the University of Washington's Gigapop in Seattle. Oregon public schools (K-12) also participate in I2 through the Internet2 K-20 Initiative.

Other Oregon Distance Education Links

- **Network for Education and Research in Oregon (NERO)**
- **Oregon Colleges Online**
Distance Education at Oregon Community Colleges
- **Oregon Educational Technology Consortium (OETC)**
OETC is an incorporated not-for-profit membership organization dedicated to maximizing the value of educational technology to its members by working with software and hardware vendors to procure the most effective and appropriate technological resources at the lowest possible price. OETC membership is comprised of over 350 educational institutions, school districts and other educational nonprofit organizations primarily in Oregon but increasingly throughout the Pacific Northwest and beyond.
- **Oregon Public Broadcasting (OPB)**
OPB offers an array of services for educators including video-based content. OPB Teacher Resource Staff is currently preparing to offer portions of their teacher outreach events via the OPENAccess21 Network.
- **Oregon Public Education Network (OPEN)**
K-12 eEducation
- **Oregon Video and Online Services (VOS)**
Data, video, and online services provided to government and education (K-16) through Oregon's Department of Administrative Services.
- **State of Oregon Enterprise Network (SOEN)**

OUS Distance Education Statistics

OUS campuses have delivered distance education degree completion and graduate-level programs to non-traditional students in Oregon for over a decade. In the past, distance learning programs mainly used interactive video networks and were aimed at students unable to attend campus-based programs due to work or family responsibilities. In recent years, OUS campuses have participated in a rapid expansion in computer-based courses, programs, and educational services. This growth in “second generation” distance education has benefited both off-campus and on-campus students. Distance learning students are finding a greater range of course offerings and more flexible learning arrangements over the Internet. Many on-campus students are participating in distance learning offerings as a way to solve course scheduling problems and to enroll in courses that better fit their individual learning styles. As a result, the number of distance learning enrollments and course offerings has increased dramatically since 1998.

Distance Learning by Delivery Mode 1995-96 through 2003-04

	Courses				Enrollments			
	Correspondence	Video	Computer	Total	Correspondence	Video	Computer	Total
1995-96	*	132	*	132	*	2,148	*	2,148
1996-97	*	110	*	110	*	2,473	*	2,473
1997-98	*	313	*	313	*	3,061	*	3,061
1998-99	280	230	222	732	1,577	5,441	3,170	10,188
1999-00	674	280	422	1,376	1,981	4,338	5,958	12,277
2000-01	374	278	420	1,072	1,294	4,700	7,374	13,368
2001-02	345	292	799	1,436	1,915	5,937	14,206	22,058
2002-03	825	296	817	1,938	5,721	4,557	15,545	25,823
2003-04	975	275	1,475	2,725	6,450	3,250	25,450	35,150

*Enrollment totals prior to 1998-99 include only interactive video-based (ED-NET) courses. Beginning in 1998-99 enrollment totals include all distance delivered courses (video-based, Web, and internet-based, CD-ROM-based, and correspondence courses).

Delivery modes:

Computer-based. Instructional delivery that relies mainly on CDROMs or computer-based networks (e.g., the Internet, local area networks, wide area networks).

Correspondence. Instructional delivery conducted mainly through public or private mail or e-mail.

Video-based. Instructional delivery that relies mainly on video technology, such as interactive video networks, cable television, videotape, telecourses, or Instructional Television Fixed Services.

OUS Distance Education Degree Programs

Undergraduate Degree / Certificate Programs

Degree Area	Institution
Associate degree in Office Administration	EOU
Criminology minor	SOU
Health Services Administration undergraduate minor	OSU
Bachelor of Science in Nursing, offered at EOU, OIT, SOU	OHSU
Bachelor of Science in Nursing for RNs (RN/BS)	OHSU
Bachelor's Liberal Studies	EOU
Bachelor's in Business/Economics	EOU
Bachelor's in Business Administration	EOU
Bachelor's in Physical Education & Health	EOU
Bachelor's in Philosophy, Politics, & Economics	EOU
Bachelor's in Fire Services Administration	EOU / WOU
Bachelor's in Information Technology	OIT
Liberal Arts Completion Degree	OSU
Bachelor of Science in Agriculture	OSU
Bachelor of Science in Environmental Sciences	OSU
Bachelor of Science in Natural Resources	OSU
Adult Education: Development / Training Master's	OSU
Adult Education: Workplace and Adult Skills Development Master's	OSU
Professional Technical Teacher Education Licensure Program	OSU
Master's in Nutrition and Food Management	OSU
Master's in Electrical and Computer Engineering	OSU / PSU
Master's in Systems Engineering	PSU
Oregon Master of Software Engineering	OSU / PSU / UO/ OGI
Master's in Education	SOU
Health Services Administration graduate minor	OSU
Graduate Certificate in Medical Informatics	OHSU
Master's in Nursing	OHSU
Master of Public Health	OSU / OHSU / PSU
Master's in Teacher Education, Elementary	EOU
Master's in Teacher Education, Secondary	EOU
Oregon Executive Master's in Business Administration	PSU / UO
Master's in Social Work	PSU
Master's in Library Science	EMPORIA STATE
Doctorate in Community College Leadership	OSU