

OREGON UNIVERSITY SYSTEM
2004 FACT BOOK

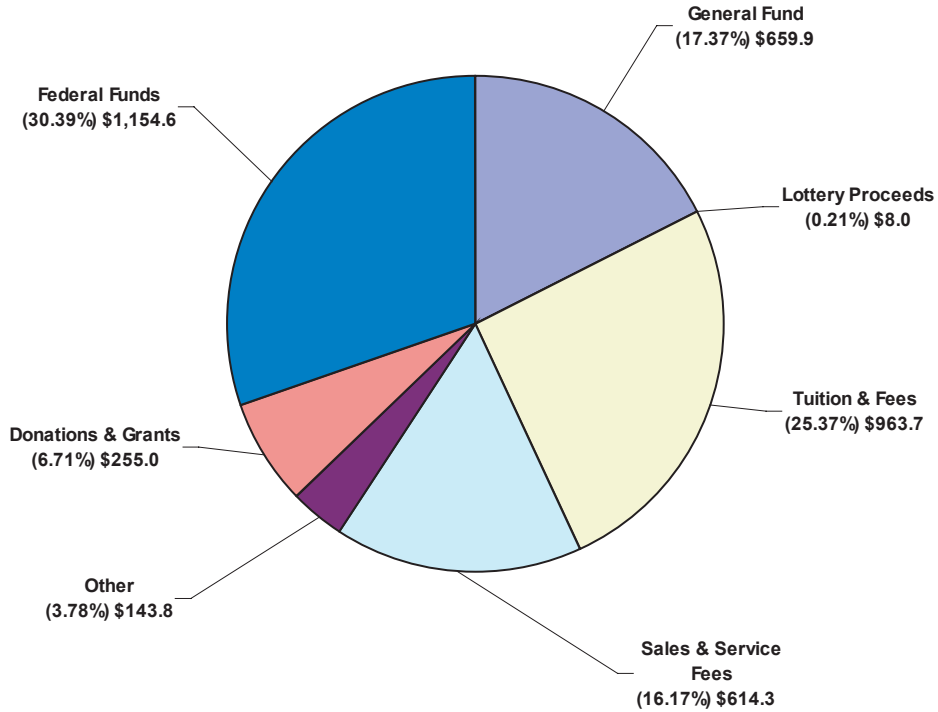
Budget and Facilities

2003-05 Legislatively Approved Biennial Budget

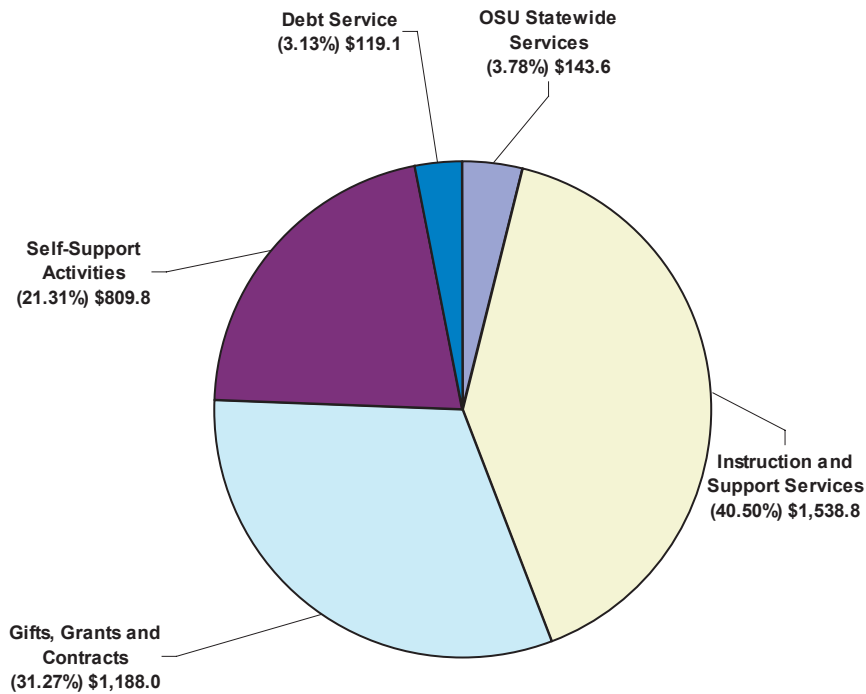
Source and Use of Funds

(Dollars in Millions)

Source of Funds
Total = 3,799.3
 (Excluding Capital Construction)



Use of Funds
Total = 3,799.3
 (Excluding Capital Construction)



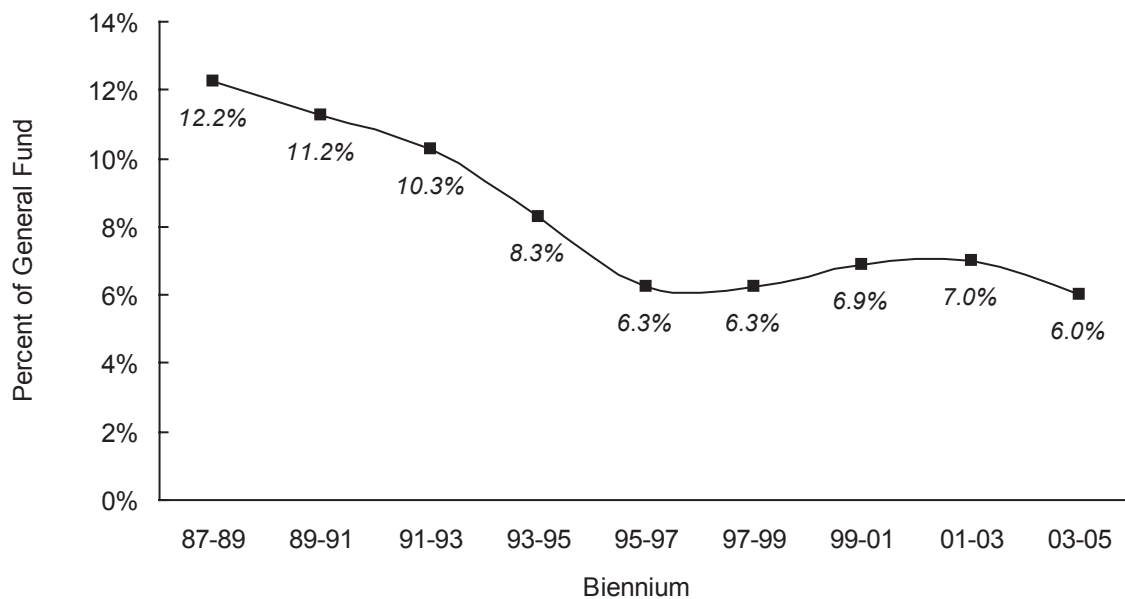
OUS Share of State General Fund Appropriation (Dollars in Millions)

Biennium	State of Oregon Total General Fund	OUS Operations ¹	OUS %
1987-1989	\$3,734	\$457	12.2%
1989-1991	4,773	537	11.2%
1991-1993	5,720	588	10.3%
1993-1995	6,746	561	8.3%
1995-1997	8,201	513	6.3%
1997-1999	9,350	584	6.3%
1999-2001	10,636	733	6.9%
2001-2003	10,327	725	7.0%
2003-2005	10,739	645	6.0%

¹ OUS share excludes Oregon Health Sciences University, excludes debt service and capital construction projects, and includes Education & General, Statewide Public Services, Legislative Emergency Board allocations and funding for building modernization and repair.

Source: (1) OUS Budget and Management Division. (2) Oregon Department of Administration Services, Budget and Management Division.

OUS Share of State General Fund Appropriation



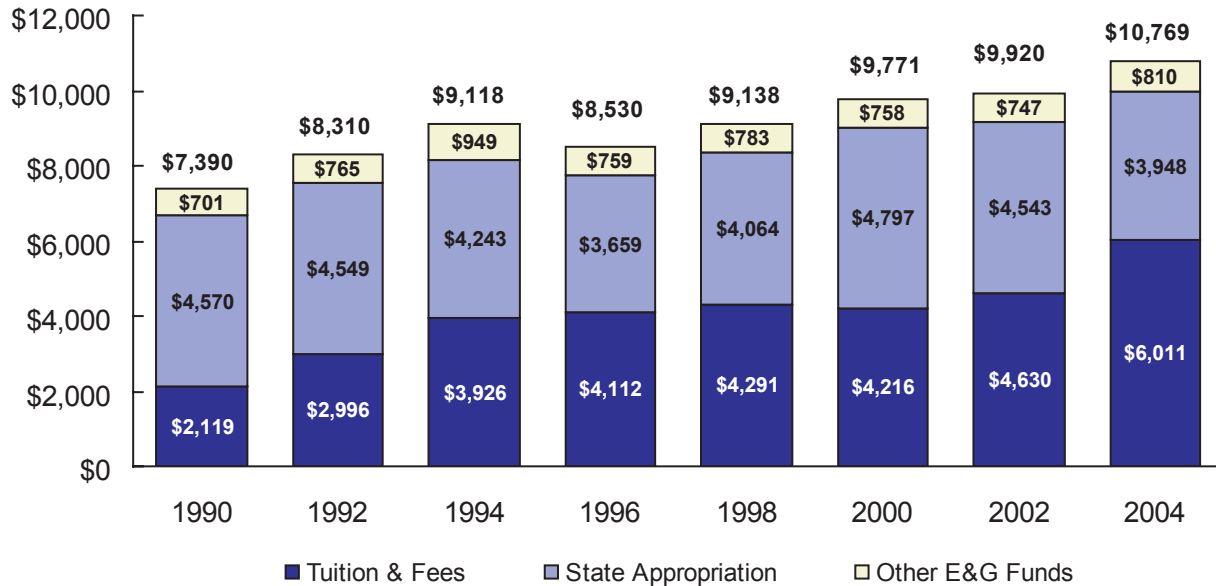
OUS Revenue per Student FTE, 1990 through 2004

	<u>Tuition & Fees</u>		<u>State Appropriation</u>		<u>Other E&G Funds</u>		<u>Total</u>	
	Amount	% of Total	Amount	% of Total	Amount	% of Total	Amount	% of Total
1990	2,119	29%	4,570	62%	701	9%	7,390	100%
1992	2,996	36%	4,549	55%	765	9%	8,310	100%
1994	3,926	43%	4,243	47%	949	10%	9,118	100%
1996	4,112	48%	3,659	43%	759	9%	8,530	100%
1998	4,291	47%	4,064	44%	783	9%	9,138	100%
2000	4,216	43%	4,797	49%	758	8%	9,771	100%
2002	4,630	47%	4,543	46%	747	8%	9,920	100%
2004	6,011	56%	3,948	37%	810	8%	10,769	100%

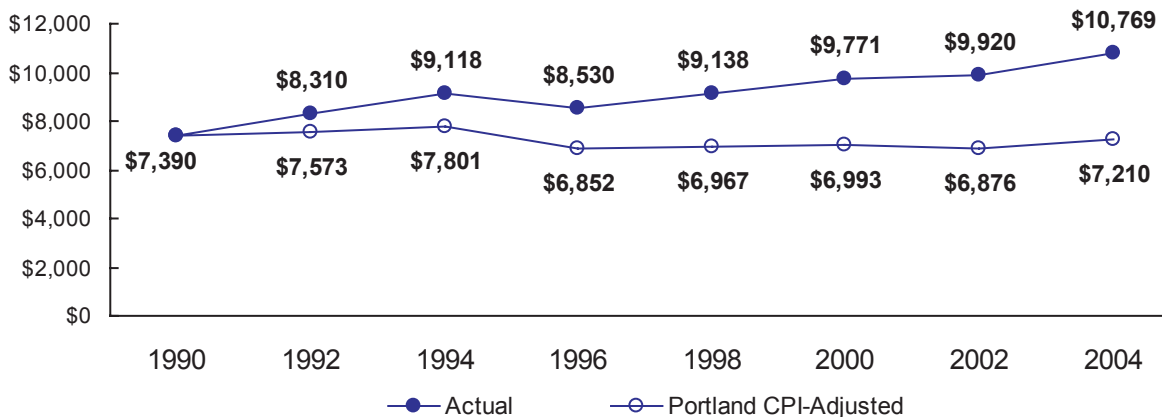
NOTES: (1) Revenue per FTE is for comparison purposes only and does not factor in cost differentials between resident and nonresident students. Resident undergraduate costs per FTE may be lower than the average revenue per FTE. (2) Data exclude OSU Statewide Public Services, OHSU, and Chancellor's Office/OCATE.

Sources: OUS Budget & Management

Components of OUS Revenue per Student



Total Revenue per Student, Actual and Inflation-Adjusted



General Fund Appropriation: Legislatively Adopted Biennial Budgets

Biennium	Appropriated General Fund ¹ (\$ in millions)	Appropriation in CPI-Adjusted Dollars ² (\$ in millions)	CPI-Adjusted Biennial Appropriation Change	FTE Enrollment ³
1987-1989	456.8	456.8	0.0%	114,605
1989-1991	536.7	519.0	13.6%	117,117*
1991-1993	587.8	541.5	4.3%	109,994
1993-1995	560.7	488.1	-9.9%	107,499
1995-1997	513.0	424.8	-13.0%	110,513
1997-1999	584.4	463.6	9.1%	114,687
1999-2001	732.6	561.5	21.1%	122,539
2001-2003	724.5	539.6	-3.9%	137,737
2003-2005	645.0	466.9	-13.5%	141,792*

NOTE: Includes debt service, capital construction, and funds for building modernization and repair. Excludes Legislative Emergency Board allocations.

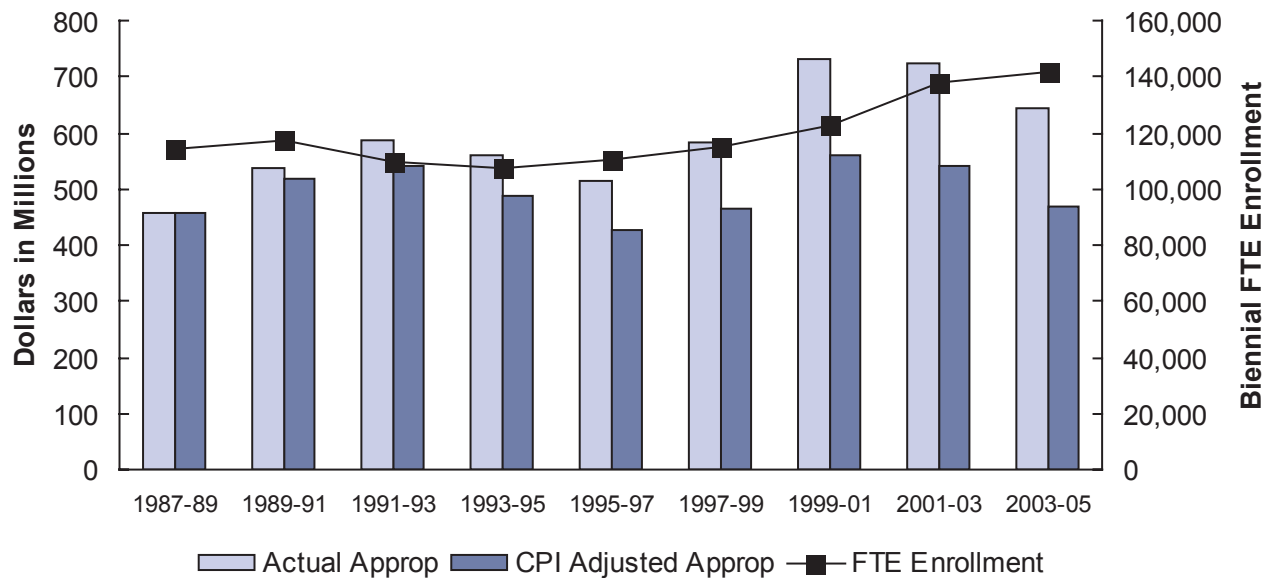
¹ Data shown excludes Oregon Health and Science University.

² Portland Consumer Price Index.

³ Data with asterisks for 1990-91 and 2004-05 are estimates due to missing or incomplete data

Source: OUS Budget and Management Division. FTE source is a special run, Annual_FTE.xls.

Biennial State Appropriation and FTE Enrollment 1987-89 to 2003-05



2004-05 OUS Annual Operating Budget, All Funding Sources

	General Fund	Other Funds Limited	Non-Limited Unrestricted	Non-Limited Restricted	2004-05 Total All Funds
Education and General Program					
Eastern Oregon University	12,408,624	13,927,439	8,445,882	8,422,043	43,203,988
Oregon Institute of Technology	14,925,151	11,698,609	6,902,805	7,642,532	41,169,097
Oregon State University - Corvallis	80,371,126	153,738,977	110,093,135	218,599,750	562,802,988
Oregon State University - Cascades	3,268,649	717,000	-	-	3,985,649
Portland State University	57,544,297	118,703,276	43,716,888	155,663,509	375,627,970
Southern Oregon University	14,619,915	23,326,878	24,360,617	39,788,850	102,096,260
University of Oregon	59,672,036	167,834,199	147,188,302	196,084,000	570,778,537
Western Oregon University	14,439,076	25,374,428	17,920,303	37,092,314	94,826,121
Chancellor's Office	5,081,176	6,042,197	1,020,174	5,973,927	18,117,474
OCECS	3,037,881	600,000	844,530	-	4,482,411
Systemwide Expense & Programs	3,532,208	-	-	-	3,532,208
Subtotal Education & General Prgm	268,900,140	521,963,004	360,492,636	669,266,925	1,820,622,705
Statewide Public Services					
Agricultural Experiment Station	25,119,250	8,512,188	-	26,812,415	60,443,853
Extension Service	15,805,487	14,541,020	-	4,103,065	34,449,572
Forest Research Laboratory	2,469,320	5,164,482	-	10,629,604	18,263,406
Subtotal Statewide Public Services	43,394,057	28,217,690	-	41,545,084	113,156,831
Other					
Sports Action Lottery Funds	-	2,451,162	-	-	2,451,162
Debt Service	13,203,135	1,610,569	45,065,488	-	59,879,192
Subtotal Other	13,203,135	4,061,731	45,065,488	-	62,330,354
Total 2004-05 Operating Budget	325,497,332	554,242,425	405,558,124	710,812,009	1,996,109,890

State General Funds- State General Funds are appropriated to OUS biennially by the legislature. The distribution of these funds to the campuses is developed in compliance with legislative Budget Notes and Board policy. Funds are allocated through the OUS Resource Allocation Model and are split 50%-50% between the two fiscal years of the biennium unless otherwise requested by the campuses.

Other Funds Limited- Other Funds Limited revenue for the operating budget is comprised principally of estimated campus tuition and fees (calculated on the basis of enrollment projections and the expenditure limitation authorized by the legislature) and indirect cost recovery on sponsored research, as well as lesser amounts of other income.

Non-Limited Unrestricted- Includes designated operations (e.g., community workshops and other self-sustaining public service and education activities) and auxiliary activities such as student housing, services, parking, athletics, and incidental fee activities. Expenditure of these funds is not limited by the Legislature.

Non-Limited Restricted- Other Funds Non-Limited revenue estimates include sponsored programs; gifts, grants, and contracts; and student financial aid programs. Expenditure of these funds is not limited by the Legislature.

Oregon University System Facilities

The seven Oregon University System campuses, the Cascades branch campus, and the university centers comprise over half of the major state-owned buildings in Oregon. Altogether, these facilities constitute over 20 million gross square feet of academic, auxiliary, and utility space, with a current replacement value (CRV) of approximately \$3.5 billion.

The 1960's and 70's were a huge growth period for all of higher education; over 50% of the OUS space was constructed within a 15-year window (see OUS Facilities Construction Graph). Now, 25 to 40 years later, the major subsystems in those buildings (heating, electrical, & plumbing) are worn out and require simultaneous overhaul.

The Deferred Maintenance by Subsystem graph highlights the building systems in need of replacement. Over 70% of the \$775 million backlog (\$591 million associated with Education & General facilities) is related to heating, ventilation, air conditioning (HVAC), electrical, and plumbing, all of which are found inside walls or hidden in mechanical spaces.

Over the next 50 years, OUS will need to invest an average of \$40 million per year to prevent the current backlog from growing.

Another major facility concern has been the seismic safety of OUS buildings. Since 2002, the Oregon Department of Geology and Mineral Industries (DOGAMI) has been working with OUS to evaluate the university buildings for earthquake stability. Many university facilities were constructed in the decades prior to implementation of a state building code that reflects modern interpretation of the size and intensity of expected future earthquakes.

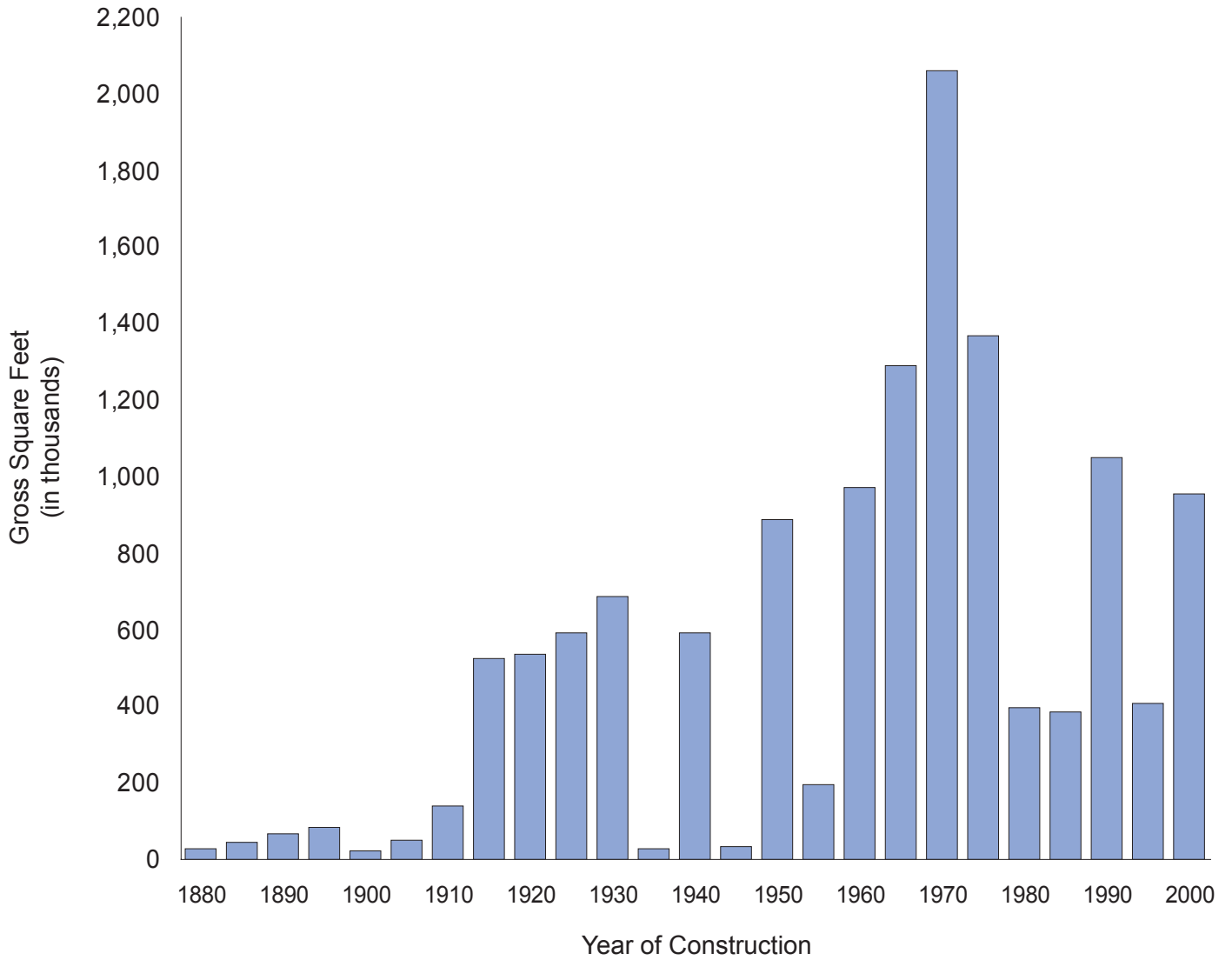
Seismic mitigation costs estimated at \$389 million are incorporated into the deferred maintenance plan.

OUS Facilities Summary: Current Replacement Value, Deferred Maintenance, & Seismic Mitigation

Institution	Current Replacement Value (CRV) (\$ in millions)	Deferred Maintenance (DM) (\$ in millions)	DM as % of CRV	Seismic (\$ in millions)	Seismic as % of CRV
GSF					
EOU	735,145	\$133	14%	\$19	14%
OIT	707,874	108	24%	5	4%
OSU	7,029,118	1,183	25%	168	14%
PSU	3,831,140	605	32%	47	8%
SOU	1,453,439	212	13%	26	12%
UO	5,788,138	1,062	18%	77	7%
WOU	1,137,367	173	15%	48	27%
Total	20,682,221	\$3,476	22%	\$389	11%

Source: OUS Capital Construction Planning and Budget.

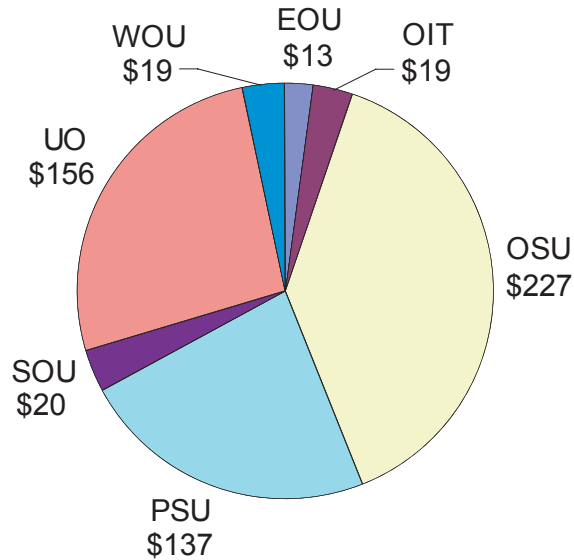
Gross Square Feet of OUS Facilities by Date of Construction *(shown in 5 year cohorts)*



Note: Excludes housing, parking, and small structures.

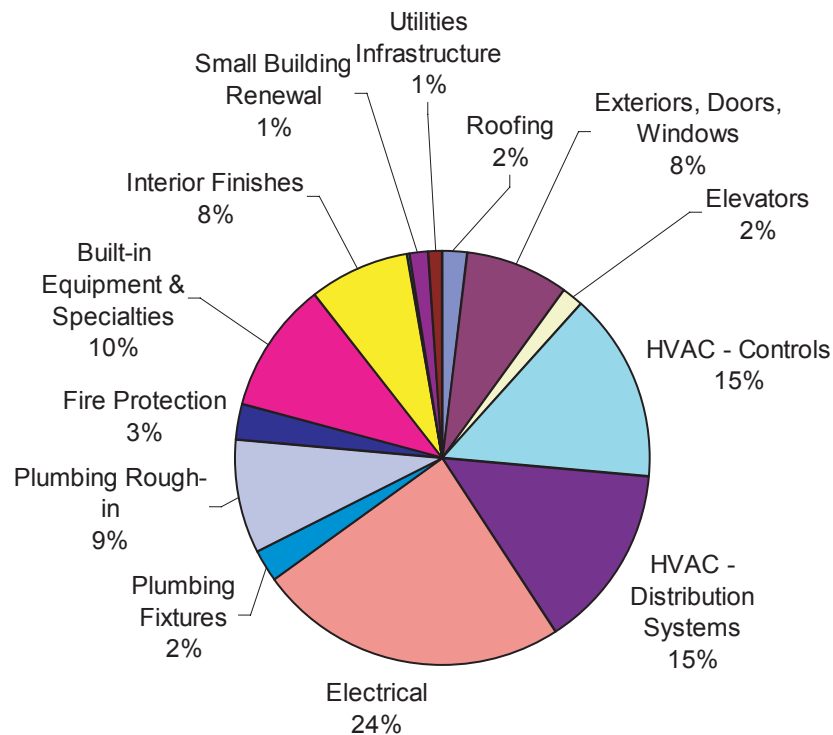
Source: OUS Capital Construction Planning and Budget.

Deferred Maintenance by Institution (Dollars in Millions)



NOTE: Education and General buildings only.

Deferred Maintenance by Subsystem (Education and General Buildings Only)



NOTE: All data shown are based on \$591 million backlog of deferred maintenance needs for all OUS campuses, excluding housing and dining facilities.

Source: OUS Capital Construction Planning and Budget.