



Oregon University System Successes and Warning Signs

Background Data

OUS Office of Strategic Programs & Planning
March 2005

Successes

Fall Headcount Enrollment, Actual and Projected 1994 through 2013¹

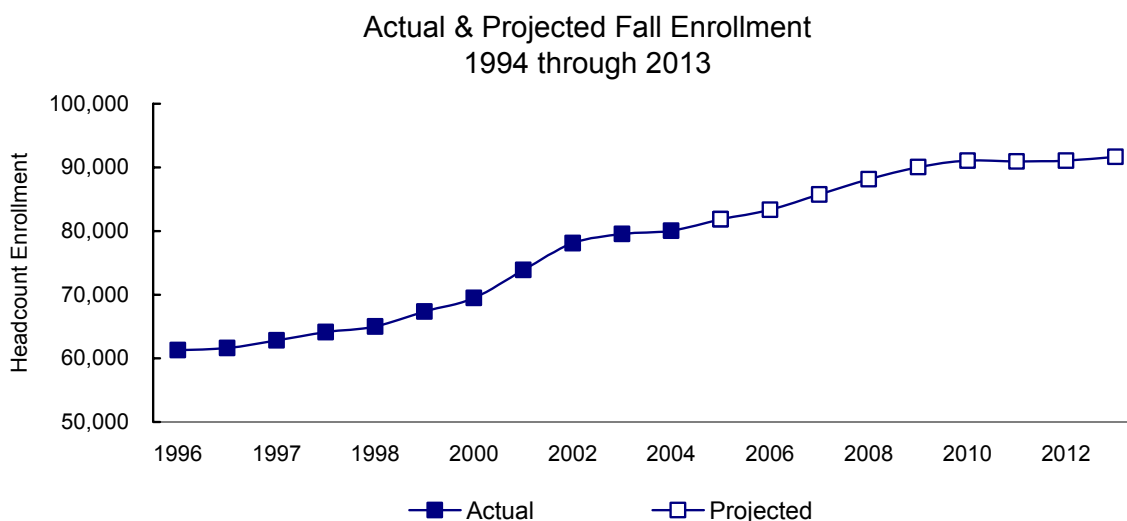
	EOU	OIT	OSU Corvallis	OSU Cascades ²	PSU	SOU	UO	WOU	Total
1994 (Actual)	2,408	2,478	14,429		15,857	5,131	16,992	3,983	61,278
1995	2,306	2,441	14,457		15,842	4,963	17,512	4,093	61,614
1996	2,403	2,339	14,083		16,843	5,104	17,803	4,272	62,847
1997	2,461	2,475	14,507		17,165	5,436	17,587	4,500	64,131
1998	2,460	2,679	15,197		17,303	5,465	17,366	4,519	64,989
1999	2,611	2,814	16,061		18,317	5,751	17,278	4,515	67,347
2000	2,784	2,842	16,777		19,029	5,502	17,843	4,731	69,508
2001	2,978	3,088	18,032	245	20,185	5,469	19,008	4,878	73,883
2002	3,418	3,139	18,774	387	21,841	5,478	20,044	5,030	78,111
2003	3,287	3,236	18,974	373	23,117	5,505	20,034	5,032	79,558
2004	3,338	3,373	19,159	438	23,486	5,161	20,339	4,772	80,066
2005 (Projected)	3,472	3,356	19,300	420	24,983	5,473	19,905	4,956	81,865
2006	3,543	3,425	19,686	436	25,693	5,583	19,923	5,044	83,333
2007	3,660	3,526	20,294	454	26,645	5,699	20,286	5,173	85,737
2008	3,770	3,614	20,917	468	27,464	5,816	20,759	5,320	88,128
2009	3,849	3,675	21,448	476	28,070	5,905	21,175	5,435	90,033
2010	3,885	3,697	21,776	478	28,355	5,936	21,426	5,496	91,050
2011	3,871	3,673	21,830	474	28,265	5,895	21,432	5,494	90,934
2012	3,874	3,662	21,891	474	28,315	5,874	21,460	5,502	91,052
2013	3,904	3,671	22,035	479	28,547	5,886	21,586	5,537	91,645

NOTE: Headcount is total enrollment and includes all extended enrollment.

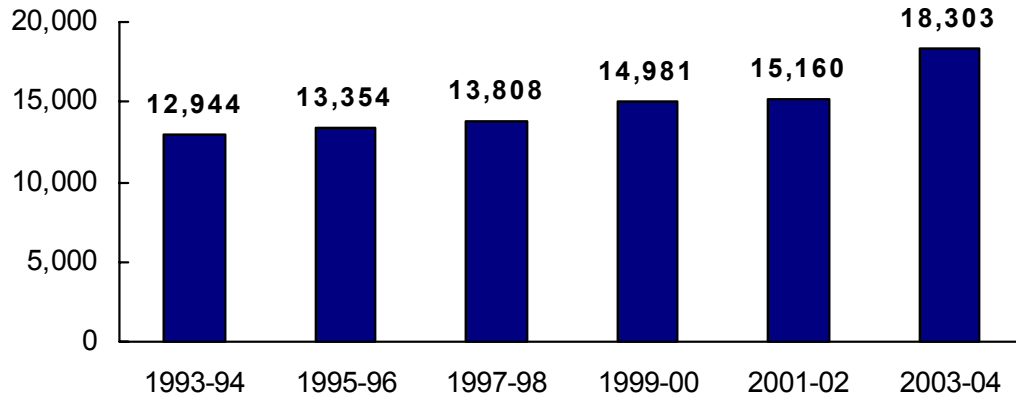
¹This projection was made in June 2004.

²OSU Cascades Campus opened in fall 2001 as a branch campus of Oregon State University.

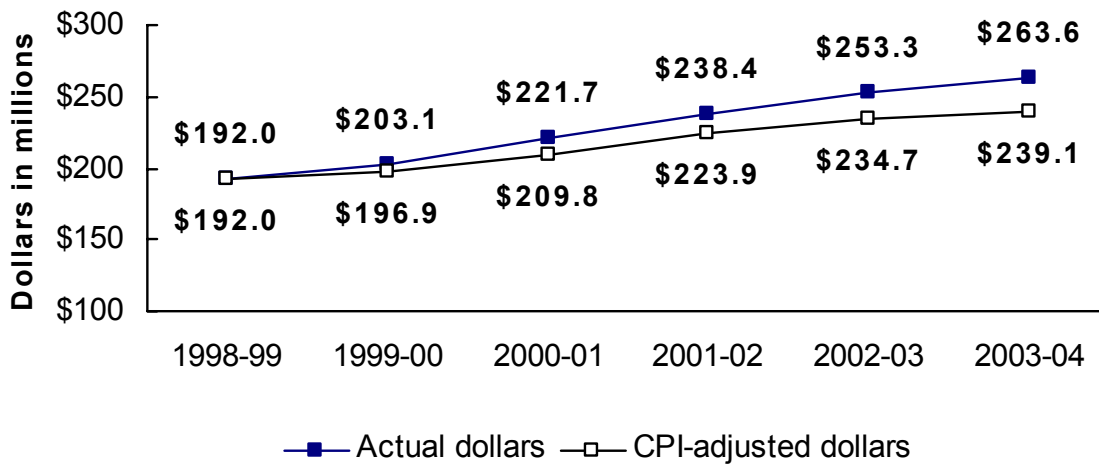
Source: OUS Institutional Research Services.



Total Degrees & Certificates Awarded in OUS 1993-94 to 2003-04



Growth in R&D Expenditures in OUS: Actual & CPI-Adjusted, 1998-99 through 2003-04



Warning Signs

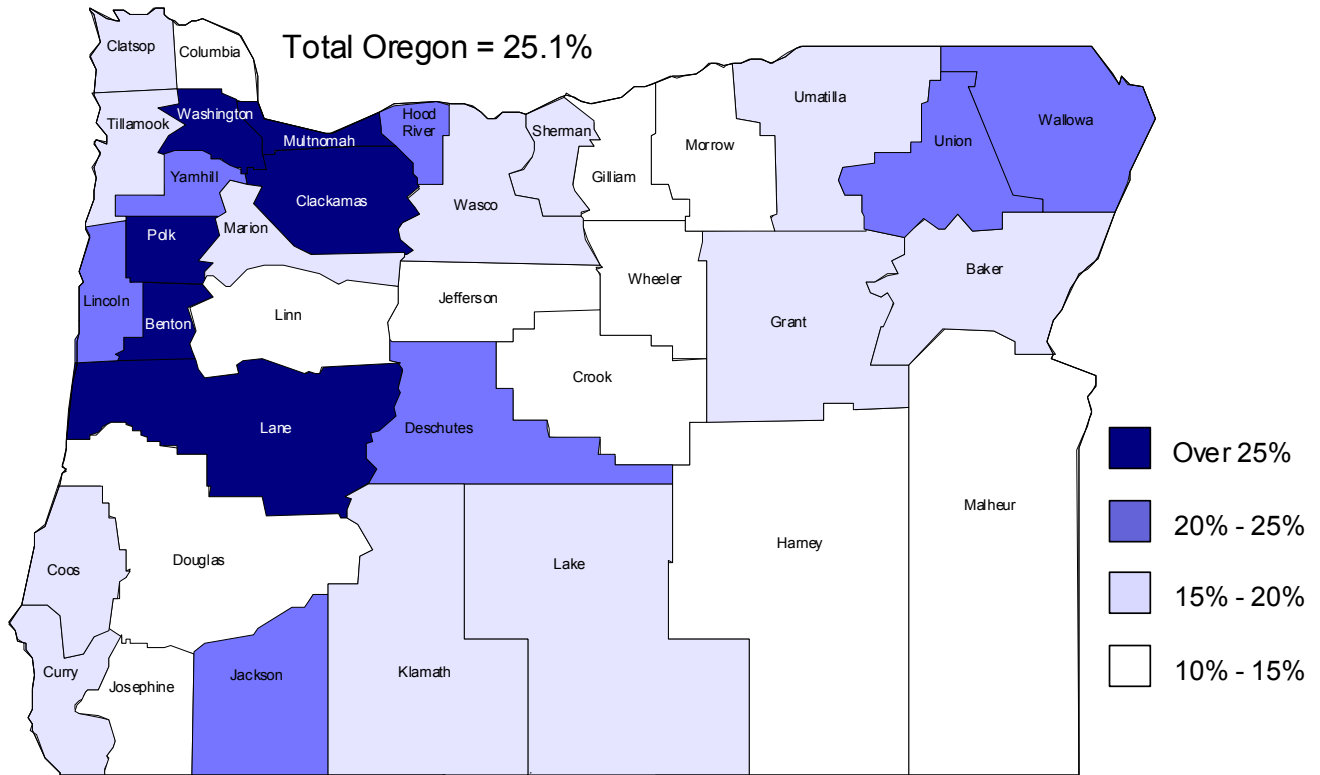
Percent of People 25 Years Old or More with a Bachelor's Degree

By Oregon County (2000)

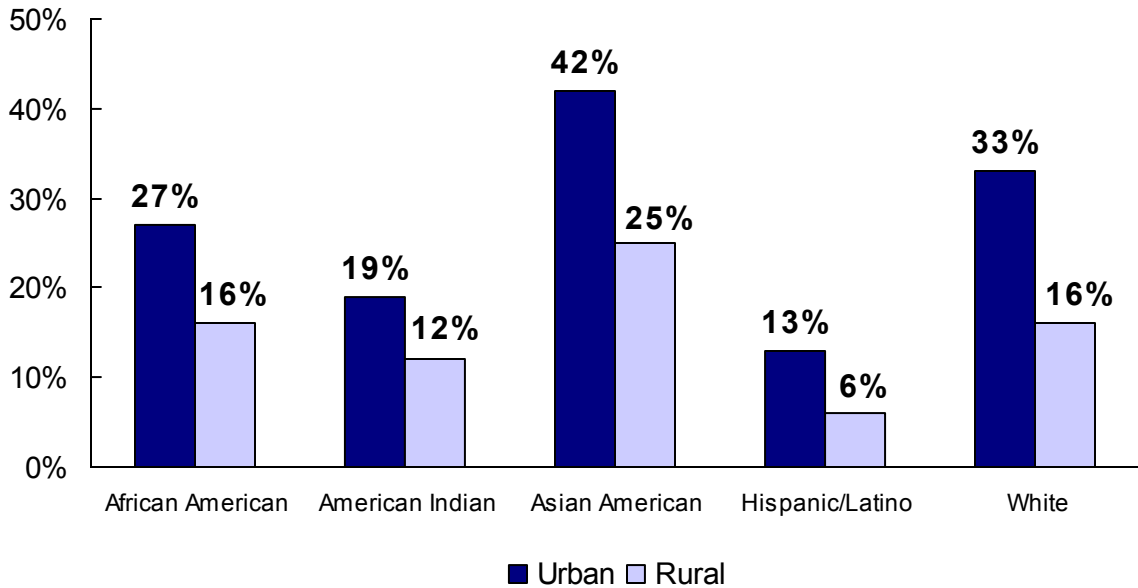
Total Oregon		25.1
1	Benton	47.4
2	Washington	34.5
3	Multnomah	30.7
4	Clackamas	28.4
5	Lane	25.5
6	Polk	25.3
7	Deschutes	25.0
8	Hood River	23.1
9	Jackson	22.3
10	Union	21.8
11	Lincoln	20.8
12	Yamhill	20.6
13	Wallowa	20.3
14	Marion	19.8
15	Clatsop	19.1
16	Sherman	19.0
17	Tillamook	17.6
18	Baker	16.4
18	Curry	16.4
20	Umatilla	16.0
21	Klamath	15.9
22	Grant	15.7
22	Wasco	15.7
24	Lake	15.5
25	Coos	15.0
26	Wheeler	14.3
27	Josephine	14.1
28	Columbia	14.0
29	Jefferson	13.7
30	Gilliam	13.4
30	Linn	13.4
32	Douglas	13.3
33	Crook	12.6
34	Harney	11.9
35	Malheur	11.1
36	Morrow	11.0

Source: Oregon Progress Board (using U.S. Census data).

Percent of Oregon Adults 25 and Older with a Bachelor's Degree, by Oregon County (2000)



Percent of Rural vs Urban Oregonians with a Bachelor's Degree by Racial/Ethnic Group, 2000



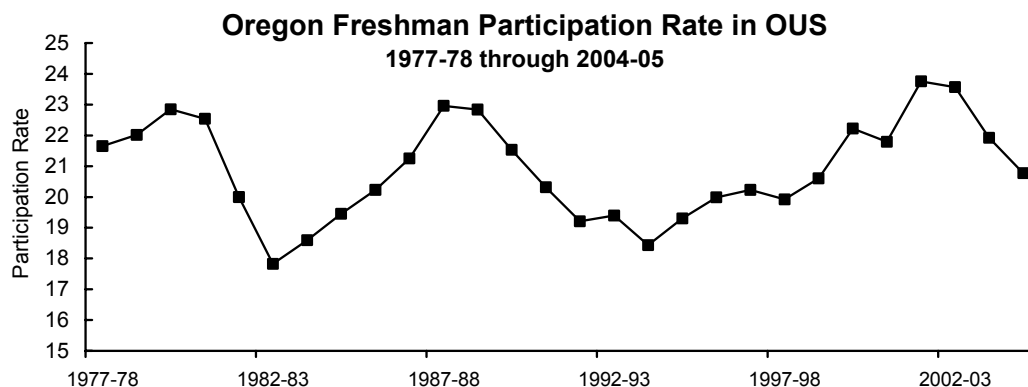
Oregon Freshman Participation Rate in OUS Institutions 1977-78 through 2004-05

Academic Year	Oregon High School Graduates Previous School Year	OUS First-Time Freshmen Fall Term	Participation Rate (percent) ²
1977-78	31,511	6,821	21.6
1978-79	31,450	6,925	22.0
1979-80	31,633	7,229	22.9
1980-81	31,310	7,058	22.5
1981-82	30,853	6,170	20.0
1982-83	30,235	5,389	17.8
1983-84	29,565	5,497	18.6
1984-85	28,804	5,602	19.4
1985-86	28,373	5,739	20.2
1986-87	27,598	5,863	21.2
1987-88	28,666	6,583	23.0
1988-89	29,594	6,758	22.8
1989-90	28,242	6,081	21.5
1990-91	26,924	5,470	20.3
1991-92	26,202	5,034	19.2
1992-93	27,013	5,240	19.4
1993-94	27,947	5,152	18.4
1994-95 ¹	28,519	5,504	19.3
1995-96	29,422	5,880	20.0
1996-97	29,411	5,950	20.2
1997-98	30,671	6,110	19.9
1998-99	30,928	6,371	20.6
1999-00	31,548	7,010	22.2
2000-01	33,813	7,368	21.8
2001-02	34,022	8,081	23.8
2002-03	34,987	8,247	23.6
2003-04	36,506	8,004	21.9
2004-05	37,332 (preliminary)	7,756	20.8

¹ Beginning with 1994-95, counts include extended enrollment students.

² The freshman participation rate is the ratio of OUS first-time freshmen from Oregon high schools (regardless of year of graduation) to Oregon high school graduates of the previous school year. For example, OUS fall 2001 resident freshmen new from high school comprised 23.8% of the June 2001 Oregon high school graduates.

Sources: (1) OUS Institutional Research Services. (2) Oregon Department of Education.



Measuring Up 2004 Affordability Measures (Raw Scores) Ranked by Grade and Family Ability to Pay at Public 4-year Colleges

State	Grade	Family Ability to Pay at Community Colleges	Family Ability to Pay at Public 4-year Colleges	Family Ability to Pay at Private 4-year Colleges	Need-Based Financial Aid	Low Priced Colleges	Student Borrowing
California	B	25%	32%	71%	48%	4%	\$3,710
Utah	C	17%	18%	21%	5%	13%	\$3,019
Minnesota	C-	19%	23%	50%	87%	20%	\$3,050
Wisconsin	D	18%	22%	54%	49%	17%	\$3,076
Hawaii	D	18%	23%	43%	n/a	9%	\$3,580
Texas	D	21%	26%	61%	36%	10%	\$3,274
Indiana	D	24%	29%	61%	85%	18%	\$3,231
Illinois	D	21%	30%	62%	78%	14%	\$3,615
New Jersey	D	24%	34%	56%	87%	16%	\$3,418
Idaho	D-	18%	22%	29%	3%	14%	\$3,044
Kentucky	D-	21%	22%	52%	40%	20%	\$3,018
Colorado	D-	21%	24%	59%	41%	13%	\$3,495
North Carolina	D-	21%	25%	68%	34%	11%	\$3,458
Virginia	D-	19%	26%	51%	35%	13%	\$3,521
Alaska	F	20%	21%	41%	n/a	12%	\$3,277
Kansas	F	19%	23%	46%	13%	14%	\$3,204
Louisiana	F	18%	23%	87%	n/a	13%	\$3,221
Oklahoma	F	20%	23%	56%	16%	16%	\$3,060
South Dakota	F	20%	23%	50%	n/a	23%	\$2,949
Georgia	F	21%	24%	64%	1%	12%	\$3,473
Nebraska	F	18%	24%	48%	12%	13%	\$3,096
Wyoming	F	21%	24%	n/a	1%	12%	\$2,898
Florida	F	25%	25%	66%	13%	14%	\$3,050
North Dakota	F	22%	25%	34%	4%	22%	\$2,793
Alabama	F	25%	26%	47%	1%	24%	\$3,228
Arkansas	F	21%	26%	53%	24%	17%	\$3,046
Mississippi	F	22%	26%	51%	1%	15%	\$2,946
Missouri	F	19%	27%	50%	12%	15%	\$3,240
Nevada	F	25%	27%	48%	n/a	10%	\$3,490
New Mexico	F	22%	27%	58%	20%	11%	\$2,990
Tennessee	F	23%	27%	65%	18%	21%	\$3,224
Iowa	F	24%	28%	54%	36%	19%	\$2,961
Connecticut	F	22%	29%	71%	44%	15%	\$3,840
Maryland	F	22%	29%	59%	33%	16%	\$3,810
West Virginia	F	27%	29%	58%	28%	18%	\$3,046
Arizona	F	24%	30%	58%	n/a	10%	\$3,622
Delaware	F	21%	30%	38%	5%	13%	\$3,881
Massachusetts	F	23%	31%	81%	62%	21%	\$4,078
Montana	F	28%	31%	51%	8%	26%	\$3,158
Washington	F	27%	31%	67%	59%	18%	\$3,619
Michigan	F	22%	32%	45%	36%	15%	\$2,963
New Hampshire	F	27%	32%	60%	12%	30%	\$3,880
New York	F	30%	32%	78%	90%	27%	\$3,646
South Carolina	F	25%	32%	58%	23%	25%	\$3,297
Maine	F	29%	34%	78%	29%	26%	\$3,299
Oregon	F	29%	34%	71%	15%	20%	\$3,292
Pennsylvania	F	23%	35%	70%	86%	19%	\$3,583
Rhode Island	F	28%	35%	78%	21%	18%	\$3,997
Ohio	F	27%	36%	62%	31%	22%	\$3,380
Vermont	F	30%	41%	66%	86%	29%	\$4,170

Source: National Center for Public Policy and Higher Education, *Measuring Up 2004*.

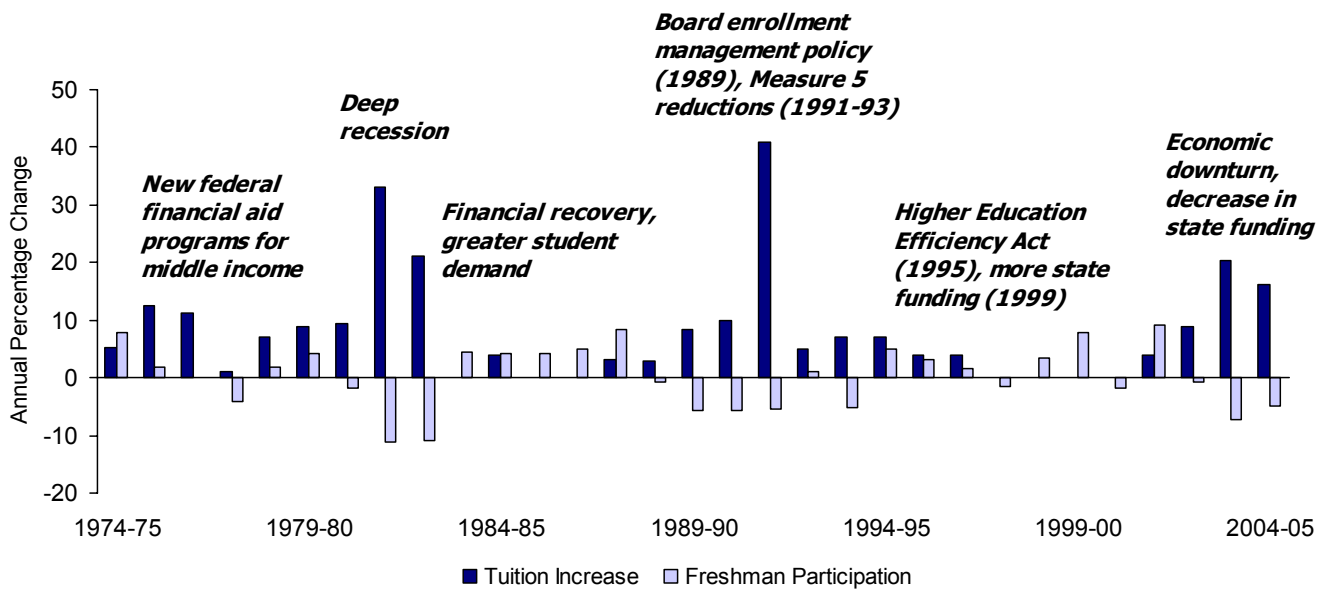
Affordability Indicators

- Family ability to pay: Percent of income (average of all income groups) needed to pay for college expenses minus financial aid.
- Strategies for affordability: State investment in need-based financial aid as compared to the federal investment.
At lowest-priced colleges, the share of income that the poorest families need to pay for tuition.
- Reliance on loans: Average loan amount that undergraduate students borrow each year.

Tuition Increases and Freshman Participation

- The freshman participation rate is the number of first-time Oregon freshmen enrolled in fall term divided by the number of Oregon high school graduates of the previous June.
- Freshmen are most sensitive to price.
- When tuition increases are large, freshman participation decreases.
- Based on past OUS trends, the tuition increase threshold appears to be around 6-8%.
- Enrollment effects frequently lag a year or two behind the tuition increase.
- The effects of smaller tuition increases may be mitigated by other factors, such as job scarcity or the availability of financial aid.

Impact of Tuition Increases on Freshman Participation in the Context of Other Events

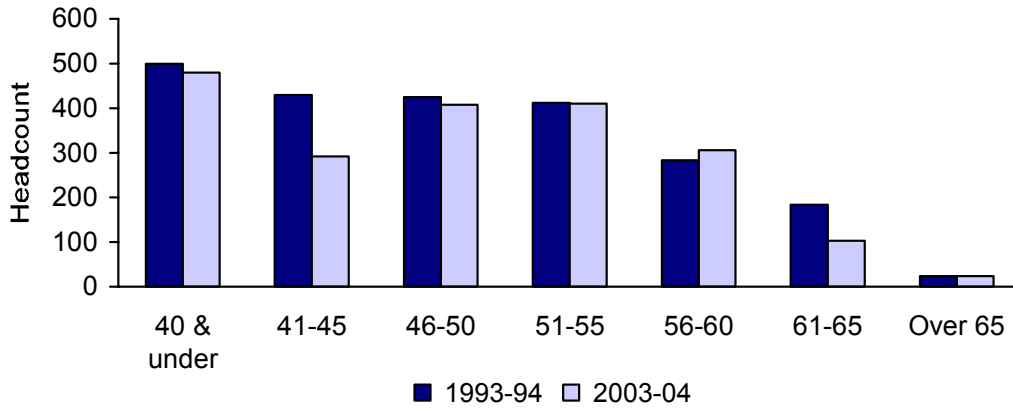


OUS Regular Rank Faculty* by Age Group 1993-94 vs 2003-04

Age Group	1993-04		2003-04		Percent Change
	N	%	N	%	
40 & under	499	22.1	480	23.7	-3.8
41-45	430	19.1	292	14.4	-32.1
46-50	425	18.8	408	20.2	-4.0
51-55	412	18.3	410	20.3	-0.5
56-60	283	12.5	306	15.1	8.1
61-65	184	8.2	103	5.1	-44.0
Over 65	24	1.1	24	1.2	0.0
Total	2,257	100.0	2,023	100.0	-10.4

* Regular rank faculty include professor, associate professor and assistant professor ranks.

OUS Faculty by Age Group, 1993-94 vs 2003-04



Ratio of Students to Full-Time Faculty Compared with Part-Time Faculty Percentage

