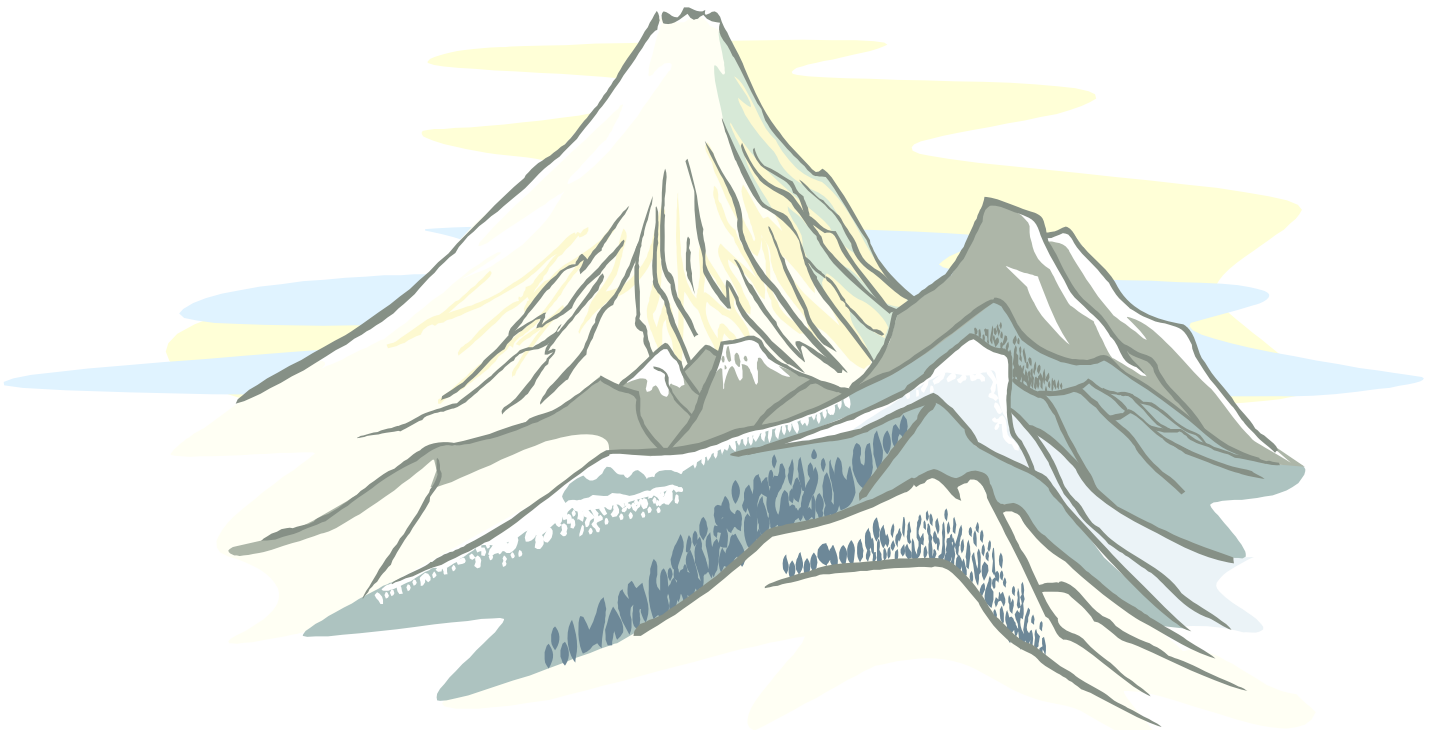


Oregon University System

Native American Resource Guide

programs and activities assisting
Native American students



September 2005

Introduction

Continuing a tradition of outreach and inclusion, the fourth edition of the Oregon University System (OUS) Native American Resource Guide is a publication that celebrates and recognizes Native Americans within Oregon and within OUS institutions.

As Oregon's public higher education agency, OUS works regularly with the state's Government-to-Government Education Cluster to assist enhancements to access and success for Native American students. Each OUS institution seeks to promote vibrant learning environments that allow opportunities for all to be engaged. This Guide includes information on the resources available within the seven OUS institutions.

Eastern Oregon University

Oregon Institute of Technology

Oregon State University

Portland State University

Southern Oregon University

University of Oregon

Western Oregon University

Please utilize the resources on the following pages to learn more about Oregon's public higher education opportunities. Welcome!

Yvette Webber-Davis, Ph.D.

Director of Education Policy and Inclusion

Oregon University System



Contents

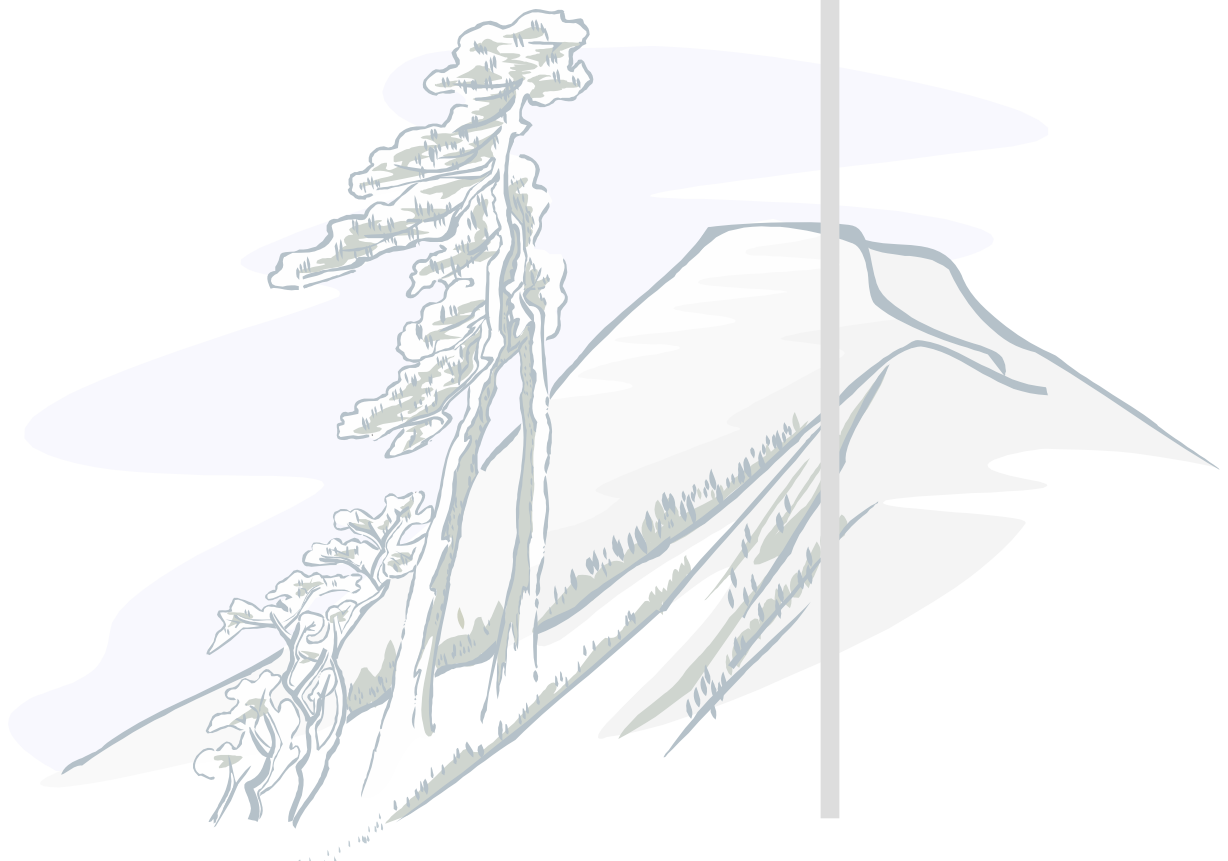
Oregon University System (OUS) Institutions

Eastern Oregon University	3
Oregon Institute of Technology	5
Oregon State University	9
Portland State University	13
Southern Oregon University	17
University of Oregon	21
Western Oregon University	25

Note: Each OUS institution has provided an overview of initiatives.

Focus on...

Community College Transfer	27
Oregon Student Assistance Commission and Financial Aid Resources	29
OAR 580-010-0037: Residence Classification of Members of Oregon Tribes	31
Oregon University System Web Sites	33



Eastern Oregon University

Eastern Oregon University (EOU) serves its regional mission through programs in the liberal arts; professional programs in business, education, and community service; and cooperative programs in agriculture and nursing.

Admissions 800.452.8639 or 541.962.3393, www.eou.edu/admissions

Career Center 541.962.3588, www.eou.edu/career

Child Care (referral service) 541.963.7942

Disability Services 541.962.3081,
www2.eou.edu/lcenter/WelcometoDisabilityServices.htm

Financial Aid 800.452.8639 or 541.962.3551, www.eou.edu/fao

Housing 541.962.3553, www.eou.edu/reslife

Learning Center 541.962.3663, www.eou.edu/lcenter

Registrar 541.962.3519, www.eou.edu/registrar

Transfer 800.452.8639 or 541.962.3393, www.eou.edu/admissions/transfer.htm

One University Blvd.
La Grande, OR 97850
541.962.3300
www.eou.edu

CONTACT OFFICE

Office of Multicultural Affairs
Native American Program
541.962.3741
www.eou.edu/oma

PROGRAMS AND ACTIVITIES

Native American Program

Eastern Oregon University (EOU) has provided student support services for American Indian and Alaska Native students since 1969. The Indian Education Institute was developed and funded through a grant from the Department of Human, Health, and Welfare Services. The continued commitment and support from the executive cabinet has enabled EOU to create a model program that is unique for Oregon.

Now under the umbrella of the Office of Multicultural Affairs (OMA), the Native American Program provides services to students such as assistance with the admissions process, financial aid planning and information, identifying and applying for campus-based aid and outside scholarships, academic ad-

vising, peer counseling and mentoring. The Office of Multicultural Affairs serves as a home base for students as they make the transition into the university setting. The American Indian Science and Engineering Society (AISES) chapter and the Speel-Ya Indian student organization provide avenues for new and returning students to find social, cultural, moral and educational support.

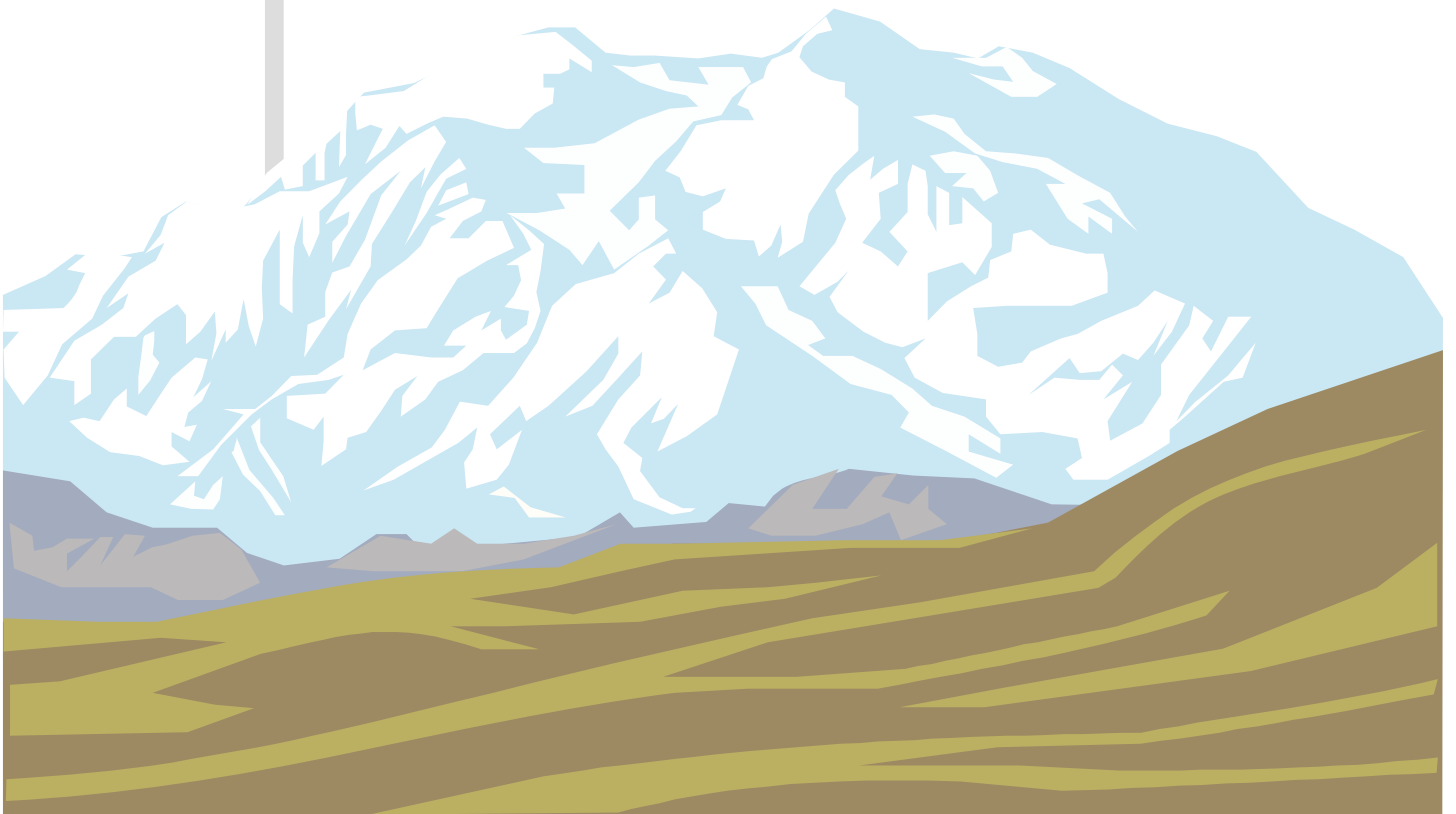
The OMA goals are to recruit, retain and graduate students of color from Eastern Oregon University. Specific to the Native American Program, staff members network with various campus departments and communicate with Bureau of Indian Affairs/tribal agencies throughout the Pacific Northwest.

Teacher Education

The Native American Teacher Education Program (NATEP) was first developed through efforts of the Jefferson County School District, EOU and the Confederated Tribes of Warm Springs. NATEP is open to any Native American student seeking to become a teacher and return to his or her community to teach. Unique to the program is the opportunity for culturally-relevant practicum and student teaching experiences. The First Citizen Award is for Native American students who are enrolled in a state- or federally-recognized Tribe or Alaska Native Corporation wishing to pursue a teaching certificate and credentials under this program.

Mentor Program

The Native American Adolescent Mentorship Program (NAAMP) is a collaborative partnership of the Confederated Tribes of the Umatilla Indian Reservation, EOU and the Pendleton School District. NAAMP matches trained college mentors with Native American youth. The goals of the program are to provide positive role models for youth and to decrease the number of behavioral referrals and school truancy.



Oregon Institute of Technology

Oregon Institute of Technology (OIT), the Northwest's only polytechnic institution, serves the state with programs in business, engineering and health technologies, and a cooperative program in nursing.

Admissions 800.422.2017 or 541.885.1150, www.oit.edu/adms

Career Center 541.851.5020, fax 541.885.1024, www.oit.edu/csdc

Center for Learning and Teaching 541.885.1791, www.oit.edu/cflt

Financial Aid 541.885.1280, www.oit.edu/aid

Housing 541.885.1094, www.oit.edu/res

Registrar 541.885.1300, www.oit.edu/reg

Services for Students with Disabilities 541.885.1031, www.oit.edu/disb

Transfer 800.422.2017 or 541.885.1150, www.oit.edu/adms/3

3210 Campus Drive
Klamath Falls, OR 97601
800.422.2017 or 541.885.1000
www.oit.edu

CONTACT OFFICE

Student Development Office
541.885.1389

PROGRAMS AND ACTIVITIES

Expansion of Programs and Diversity Initiatives

Major strides have been made in diversity training, initiatives, and partnerships between campus and community. A committee called the Cultural Forum was formed in the summer of 2004. A broad based group comprising faculty, administrators and students came together to solidify efforts campus and community wide. Cultural competency training was made a part of fall convocation with many faculty participating and a second training was held for student leaders in the afternoon. Training continued throughout the year for students and staff. In addition, the number and types of programs on campus were greatly expanded.

Recently the Diversity Center opened in the newly renovated College Union on the OIT campus. This long awaited student center saw a

record growth during the 2004–05 academic year. Numerous programs, activities, and referrals helped support the academic, social, and personal success of diverse students at OIT. The new student lounge features Bistro tables, new flat screen computers, couches and chairs as well as a media cabinet, and small kitchen area.

The Center serves as an informal learning community for students, as well as a venue for programs. Last year 14 student coffee hours, 2 art gallery exhibits as well as numerous other programs helped to increase campus-wide visibility, awareness and an acceptance of diversity. The new logo features photographs of Native American, Hispanic, African American, and international students from Vietnam, Nepal, Kuwait, South Africa, and El Salvador. The new logo along with a new newsletter and new artwork on posters, invita-

tions, and fliers helped to strengthen attendance at programs and outreach in diversity efforts campus-wide.

Native American Club

The Native American Club, a student organization officially recognized by the Associated Students of Oregon Institute of Technology (ASOIT), has in the past served as a support group to students, promoting understanding, visibility, and cultural diversity. This year a native Klamath student helped design a diversity survey, reaching out to OIT Native American Students for their input on improving services and programs. Native student athletes also volunteered in the Character Counts Program at area schools and in helping Chiloquin High School students prepare for college.

Strengthened Relationships with the Klamath Tribes

The office of Student Development is dedicated to providing information, support, and referral to OIT's Native American Students through a variety of services. Academic advising, admissions, financial aid, counseling, testing, tutorial services, scholarships, and career planning are all available, as well as leadership training and program and peer support. A growing working relationship between local tribal offices and OIT served to enhance student success during the 2004-05 academic year. Staff in the Student Development office, as well as Sponsored and Pre College Programs and Public Affairs departments, worked closely with staff from the Klamath Tribes in bringing a mini powwow and art exhibit to campus.

First Warrior Exhibit

A photographic exhibit honoring native veterans was held at OIT in February 2005. The photo exhibit, "First Warrior," featured the work of Jeffery Mitchell, who has photographed more than 70 native veterans, both men and women from 43 tribes in nine states. The OIT exhibit featured 17 large black and white images of native World War II veterans along with their personal stories. A special reception was held at the start of the week long exhibit. Klamath Tribal Council members spoke along with OIT President Martha Anne Dow. A local drum and refreshments were on hand as visitors toured the exhibit.

According to Gary L. Willhide, Director of OIT Public Affairs, Mitchell's "First Warrior" work began on Veteran's Day 2000, when he was first familiarized with the history of the American Indian's military service. He was struck by the fact that they now protect the same homeland that was taken from their people. With further research and the assistance of the Northwest Indian Veterans Association, he took the first "First Warrior" photograph of Korean War veteran Reggie Winishut on May 25, 2001 at the Warm Springs Reservation. Mitchell's goal is to archive the history of 125 native World War II men and women veterans. Mitchell's background is in film production and commercial photography, but, in 1994 while still living in San Francisco he became interested in "Celebrating American Heroes." He now lives in Klamath County. The "First Warrior" exhibit has appeared in numerous venues, including the Galleria at the Oregon State Capitol and at the 2002 Winter Olympics in Utah.

Honor Powwow

Culminating the week of the exhibit was the third annual Honor Powwow, sponsored by the Klamath Tribes' Johnson O'Malley Program, the OIT Diversity Center and International Club. Held in the college union, this powwow honors native students in grades 7–12. This event enjoyed record attendance of almost 300 native high school students along with their parents, relatives and friends. Five drums from the surrounding area were on hand to recognize the achievements of all native high school students earning a 3.0 GPA or higher. Students received certificates and jackets from the Klamath Tribes. The four hour event featured dancing, drumming, singing, with a record number of vendors. The college Marketplace served Indian tacos and fry bread as well as numerous other dishes.

Sponsored and Pre-College Programs

Outreach to the native community was strengthened during the 2004-2005 school year with a number of programs. Sponsored and Pre-College Programs facilitated a grant through the Oregon GEAR UP program to help Chiloquin junior/senior high school students plan and prepare for their futures.

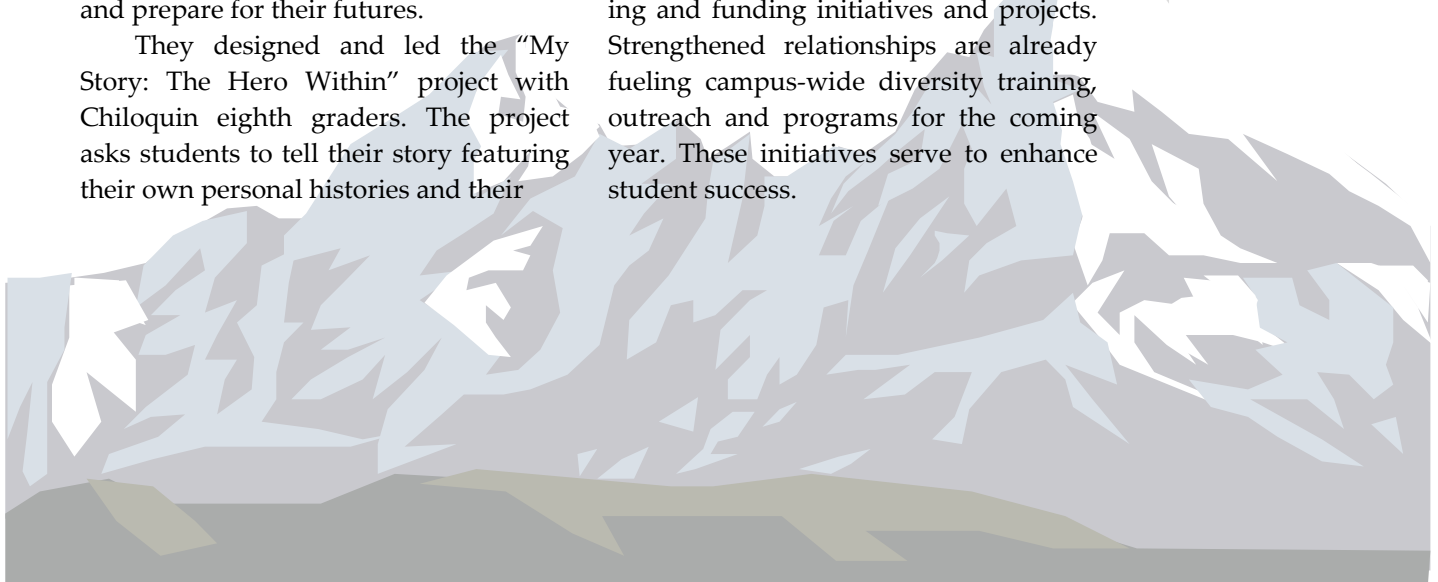
They designed and led the "My Story: The Hero Within" project with Chiloquin eighth graders. The project asks students to tell their story featuring their own personal histories and their

perceived futures. The project challenged the students to be treasure hunters and to design a map to take them into their future. Staff of the Sponsored and Pre-College Office worked with the students once a week, helping them write their stories and design posters. The project culminated in a celebration attended by over 130 parents, students and community members.

This department has a commitment to broaden education for all students, especially those that are traditionally underrepresented in higher education. The office works closely with volunteers and will continue expanding programs in the future.

Local Connections and Future Directions

Klamath County enjoys a rich Native American heritage dating back generations, with the Klamath Tribes' spiritual connection to Mount Mazama. This ancient northwest volcano hundreds of years ago became the collapsed caldera that today forms the beauty and scenic wonder of nearby Crater Lake. A number of departments on campus and in the community strengthened their collaborative efforts this year, joining in coordinating and funding initiatives and projects. Strengthened relationships are already fueling campus-wide diversity training, outreach and programs for the coming year. These initiatives serve to enhance student success.



Oregon State University

Oregon State University (OSU) is a land-, space-, and sea-grant university with programs in the liberal arts and sciences and professional programs in agricultural sciences, business, education, engineering, forestry, health and human sciences, oceanography, pharmacy, and veterinary medicine.

OSU - Cascades Campus, successor to the Central Oregon University Center, opened in fall 2001 as a state-of-the-art branch campus on the site of its major partner Central Oregon Community College, in Bend. OSU and its collaborating public and private program providers offer a wide array of student services and a growing number of degree programs in arts and sciences, business, education, natural resources, and recreation.

Admissions 800.291.4192 or 541.737.4411, www.oregonstate.edu/admissions

Career Center 541.737.4085, www.oregonstate.edu/career

Child Care 541.737.4641, www.oregonstate.edu/childcare

Extended Programs 800.667.1465 or 541.737.2676 ecampus.oregonstate.edu

Financial Aid 541.737.2241, www.oregonstate.edu/admin/finaid

Housing 541.737.4771, www.oregonstate.edu/uahds

Older Than Average Students 541.737.1562

Precollege Programs 541.737.1470, www.oregonstate.edu/precollege

Registrar 541.737.4331, www.oregonstate.edu/registrar

Services for Students with Disabilities 541.737.4098, www.oregonstate.edu/dept/ssd

Transfer 800.291.4192 or 541.737.4411,
www.oregonstate.edu/admissions/transfer.html

PROGRAMS AND ACTIVITIES

Indian Education Office

The Indian Education Office implements recruitment, transition-to-college, and retention activities designed to enable students to achieve academic success and to graduate without losing their culture and commitment to the American Indian community; serves as a liaison to tribal and urban American Indian communities; advises Oregon State University regarding American Indian issues; advises the American Indian student organizations; edits

and publishes the Financial Aid Resource Guide for American Indian/Alaska Native Students; and cooperates with other academic and support units.

In addition to collaborating with the Ethnic Studies Department, the OSU Extension Service at Warm Springs, and the OSU Continuing Higher Education initiative at Warm Springs, the Indian Education Office works closely with the following campus organizations.

200 Kerr Admin Bldg
Corvallis, OR 97331
800.291.4192 or 541.737.9030
www.orst.edu

CONTACT OFFICE

Indian Education Office
541.737.4383
www.orst.edu/dept/indianed

OTHER OFFICES

Educational Opportunities
Program (EOP)
541.737.3628
www.orst.edu/dept/eop

Multicultural Affairs
541.737.4381
www.orst.edu/admin/multicultural

Native American Longhouse

The Longhouse serves as a cultural center for American Indian students. The Longhouse offers cultural activities and study clubs for various academic disciplines; sponsors high school visitations; sponsors the annual fall term Welcome/Welcome Back Retreat for new and returning American Indian students; serves as a meeting place for off-campus American Indian groups as well as on-campus organizations such as the Native American Student Association and the American Indian Science and Engineering Society; and creates a “home away from home” for American Indian students, by providing access to computers, a kitchen, a lounge, and craft workshops.

American Indian Science and Engineering Society (AISES)/Society for the Advancement of Chicanos and Native Americans in Science (SACNAS)

AISES/SACNAS is a national organization, with about 130 student chapters. In the recent past, the OSU chapter has garnered national recognition as Chapter of the Year for its academic achievements and community service activities.

AISES/SACNAS conducts outreach events to the Chemawa Indian School in Keizer. Each year, about a dozen OSU AISES/SACNAS members travel to the annual conference.

Native American Student Association (NASA)

NASA is the American Indian student club responsible for the annual OSU Pow Wow. NASA brings speakers to campus and promotes American Indian culture to the OSU community.

Student Support Services (SSS)

Student Support Services provides academic and financial support for low income and first generation undergraduate students.

Educational Opportunities Program (EOP)

EOP provides academic development services and coursework to low-income, first-generation-in-college, and minority students. The Ronald E. McNair Post-Baccalaureate Achievement Program includes American Indian students.

Science, Math, Investigative Learning Experience (SMILE)

SMILE is a precollege program that reaches out to eight rural communities in Oregon with large populations of American Indian and Latino residents. The program provides skill-building programs to increase the opportunity for youth from those communities to move on to higher education. SMILE conducts a weeklong camp on campus in which many of OSU’s American Indian students participate as counselors.

OSU Native American Events

❖ **CONNECT** - This is an admissions orientation program for incoming students, organized by the Indian Education Office, Ethnic Studies Department, Native American Longhouse, and EOP.

❖ **Longhouse Retreat** - This annual event at Siletz Reservation is designed to encourage interaction and support between new students and returning students and staff.

- ❖ **Kaleidoscope of Colleges and Culture** - This event focuses on the recruitment of students of color.
- ❖ **Sacred Landscapes Conference** - This daylong meeting brings American Indian storytellers, environmental experts, and spiritual leaders to campus to discuss American Indian perspectives about the environment.
- ❖ **Pow Wow** - This is an annual two-day celebration sponsored by NASA.
- ❖ **Community outreach event (conducted in conjunction with the Pow Wow)** - This is an effort to encourage American Indian students to enroll in postsecondary education and to highlight OSU's academic programs and student services.
- ❖ **American Indian Education Week** - Scheduled the week preceding the Pow Wow, this celebration features speakers, activities, a Longhouse open house, and a salmon dinner.
- ❖ **Oregon Indian Education Association Youth Conference** - This annual event is held on the OSU campus in spring, in conjunction with American Indian Education Week, the Pow Wow, and the Sacred Landscapes Conference.
- ❖ **Graduation banquet** - Sponsored by the Indian Education Office, this dinner honors the graduating students and, in turn, provides them with the opportunity to honor their families and to acknowledge the support they have received from home.
- ❖ **College visitations** - Throughout the year, the Indian Education Office, the Longhouse, and AISES collaborate to bring young American Indian people to campus to experience the university atmosphere.



Portland State University

Portland State University (PSU) is an urban university offering liberal arts and sciences programs and professional programs in business, education, engineering, health, performing arts, social work, and urban and public affairs.

Admissions 800.547.8887 or 503.725.3511, www.pdx.edu/admissions
Career Center 503.725.4613, www.career.pdx.edu
Child Care 503.725.3092 or 503.725.3093, www.hgcdc.pdx.edu
Extended Programs 503.725.3276, www.extended.pdx.edu
Financial Aid 800.547.8887 or 503.725.3461, www.pdx.edu/finaid
Housing 800.547.8887 or 503.725.4333, psu.housingnorthwest.org
Precollege Programs 503.725.4458 or 503.725.4010, www.ubets.pdx.edu
Registrar 503.725.3401, www.pdx.edu/registration
Disability Resource Center 503.725.4150, www.pdx.edu/iasc/drc.html
Transfer 800.547.8887 or 503.725.3511, www.pdx.edu/admissions/transfer.html

PROGRAMS AND ACTIVITIES

Portland State University has a commitment to student retention and success, and values the rich contributions that ethnically diverse students, staff, and faculty bring to the campus-learning environment. The staff of Educational Equity Programs and Services and the staff and volunteers of the Native American Student and Community Center work together to provide resources, programming and support for educational activities that create unique learning opportunities for individuals of all ages, both Native and non-Native.

Native American Student Support Services
www.ess.pdx.edu/eeps

A coordinator for Native American Student Services assists Ameri-

can Indian/Alaska Native students with academic advising, counseling and support services to improve student access, retention and graduation. A high priority is given to providing the broad range of services needed to ensure student success, including working closely with Tribal Education Departments. Linkages to community services, advocating for students, referrals and serving as a campus resource and liaison for students, faculty, staff, administrators and the public on Native American issues are also responsibilities of the coordinator. A highlight each year is the Honor Day Ceremony held to recognize graduating students. Collaboration with the PSU Native American Community Advisory Board, an organization of Native American community

PO Box 751
 Portland, OR 97207
 800.547.8887 or
 503.725.3000
www.pdx.edu

CONTACT OFFICE

Educational Equity Programs
 and Services
 503.725.4457
www.ess.pdx.edu/eeps

OTHER OFFICES

Native American Student
 Services
 503.725.5348

Native American Student
 And Community Center
 503.725.9695
www.nativecenter.pdx.edu

United Indian Students in
 Higher Education (student org)
 503.725.5671

American Indian Science and
 Engineering Society
 PSU Chapter (student org)
 503.725.5351

Educational Opportunity
 Program / Student Support
 503.725.3815
www.ess.pdx.edu/eop

Native American Studies
 Program
 503.725.3917

Tribal Administration
 Program
 800.547.8887 x8080 or
 503.725.8080
www.tribaladmin.pdx.edu

members and PSU alumni, is a key ingredient to the success of an event that brings graduates, their families, campus community and organizations together. The diversity among the AI/AN students is extensive, with students coming from as far as Nome, Alaska and Wisconsin, as well as from the Oregon, Washington, and California tribes. The coordinator serves as the advisor for UISHE and AISES – the two AI/AN student organizations on campus, student clubs that provide an environment where students are able to enrich their educational and leadership experiences.

AISES and UISHE

Student Activities and Leadership Programs, Student Affairs

The PSU Chapter of American Indian Science and Engineering Society (AISES) is one of the 160 chapters across the US and Canada linked to the National AISES organization in Albuquerque, New Mexico. AISES meets weekly and is an important resource for students who have an interest in pursuing studies in science, engineering and technology. Membership in the PSU Chapter is open to students regardless of majors and has been a great value to all students, especially the opportunity to attend the three major conferences during the year: the National AISES Conference, the leadership conference and the regional conference. The support National AISES offers through its five scholarships is also of great value to students. The PSU AISES Chapter focuses on academic endeavors, as well as cultural ones, and speakers and events are held throughout the school year to reflect the group's interests and current concerns occurring in Indian country.

The United Indian Students in Higher Education (UISHE) celebrated its

28th year on campus and is one of the most longstanding, integral parts of the Portland Native American community. They meet weekly to discuss the kinds of cultural events planned each year. The Pow Wows offered are student driven and work with an established network within the Indian community in very supportive ways; the Christmas Pow Wow helps to recruit toys and food drive for children, the Pi Nee Waus Pow Wow held in March celebrates the Indian Elders, and the Native American Cultural Awareness Week (NACAW) Pow Wow culminates in the week long efforts held in May to promote and preserve Native American culture and identity. NACAW also holds a traditional salmon bake and a Native American Film Festival. Recently, UISHE collaborated with the Oregon Indian Education Association (OIEA) to hold a High School Youth Conference which was attended by approximately sixty tribal youth statewide. Both organizations have a strong connection to the Native community and are involved in the many activities that promote and raise the awareness of Indian issues.

The Native American Student and Community Center

www.nativecenter.pdx.edu

Since its opening in the fall of 2003, the Native American Student and Community Center has become a hub of activity for Native and non-Native students, the Native American/Alaska Native communities of Portland and Oregon, and the entire Portland State University campus. Core to the Center is its mission: *"The Native American Student and Community Center strives to be a self-sustaining learning environment that encourages self-determination and inspires*

cooperation and appreciation for all generations of all Nations; it is a gathering place based on traditional indigenous values to invigorate, promote and engender health, goodwill, and community esteem."

The Center expands PSU's efforts to provide a welcoming climate that supports Native American, Alaska Native and Native Hawaiian students in their pursuit of a college education. A key purpose of the NASCC is to provide a "cultural home" for Native students; it is an environment where they can balance cultural traditions with academic lives. Another function of the center is to link the campus and greater Native American communities, the Tribes of Oregon, and Native people from across the country to collaborate in an effort to create greater inter-cultural understanding and learning. The new Native American Studies degree program conducts classes in the Center, sharing use of the space with many tribal and Native American service and volunteer agencies that hold workshops, activities, and meetings in the Center.

The Center has a resource and computer room for student and community use and an office for the campus' Native American/Alaska Native student organizations; UISHE and AISES. Within the unique design, there is a classroom, meeting rooms equipped with interactive distance technology, a children's play area, lounge area, and a meeting room for student and community gatherings. Artwork designed and created by Native American artists is embedded throughout the building and provides cultural ambience throughout the building. An outdoor walkway leads to the "eco"-roof, an important feature of the building's natural climate control system. The

building is open during the general hours of most buildings on campus.

Native American Studies Program

www.nas.pdx.edu

PSU's Native American Studies (NAS) Program was inaugurated in 2004 and presently offers a Minor in Native American Studies. NAS is an interdisciplinary program with coursework drawn from Anthropology, Art, English, History, Linguistics, Political Science, and other departments and schools. The substantive focus of this curriculum is the histories and cultures of American Indians, Alaska Natives, and Native Hawaiians. The minor is meant to serve three primary constituencies: 1) students who have a serious academic interest in Native Americans and who wish to combine the study of Native Americans with their major; 2) students who plan careers in Indian or native affairs; and 3) students who have a nascent interest in Native Americans and wish to fulfill their general education requirements with courses in this area.

This program prepares students to work for tribal governments and native-oriented organizations as professionals, or as informed professionals in organizations not specifically dedicated to native issues, but which interact with tribal governments on a government-to-government or business basis.

Courses for the 2005-2006 academic year include:

- ▶ Introduction to Native American Studies;
- ▶ Introduction to Native American Languages
- ▶ Introduction to Tribal Governments
- ▶ Native American Accomplishments;

- ▶ Language Maintenance and Revitalization
- ▶ a Cooperative Education/Internship (credit to be arranged)

Please see the program's website www.nas.pdx.edu/program.php for a full description of courses

Student enrollment in Native American Courses far exceeded the expectations of PSU administration in 2004-2005, and we expect that enrollment will continue to grow dramatically as the program integrates and hires new faculty. The director and the faculty will be working in the future to attract Native American students and students from other backgrounds into NAS courses.

Amy Lonetree (Ho Chunk), formerly a faculty member in American Indian Studies at San Francisco State University, has been appointed Assistant Professor of Native American Studies at PSU. Dr. Lonetree has a PhD in Ethnic Studies from the University of California at Berkeley. A recipient of the prestigious University of California Chancellor's Postdoctoral Fellowship, she will begin teaching at PSU in September, 2006.

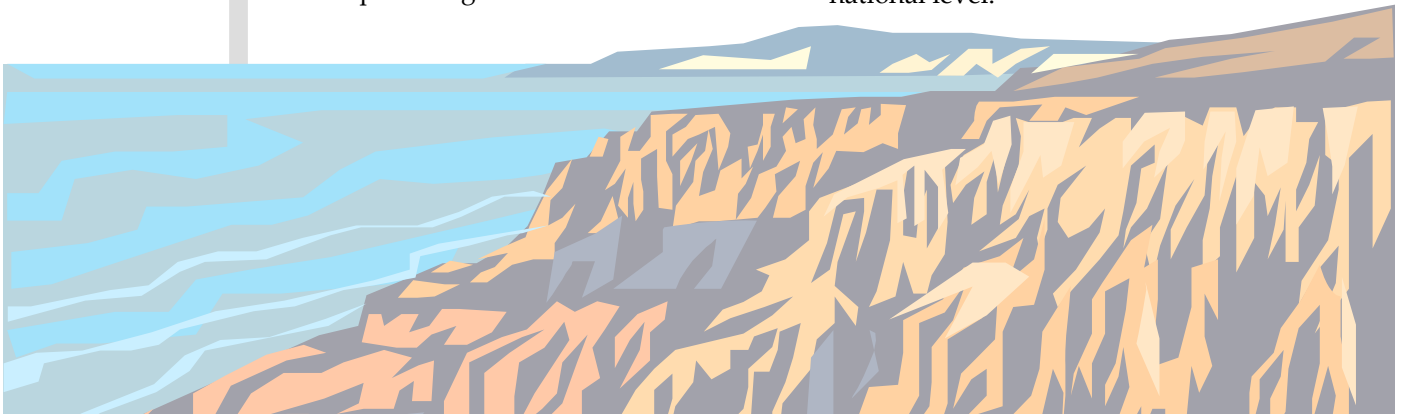
The Institute for Tribal Government

www.tribalgov.pdx.edu

The Institute for Tribal Government in The Hatfield School of Government, College of Urban and Public Affairs at Portland State University provides leadership training and educational resources

to tribal, local, state, and federal governments. Founded by its director, former Congresswoman Elizabeth Furse, it is governed by a Tribal Policy Board (elected tribal chairpersons, directors of tribal governmental and policy organizations, and representatives of institutions of higher education) that provides policy guidance to the Institute. The Tribal Leadership Forum, a 501c3 non-profit corporation, was also created to support the work of the Institute in its charitable, literary, and educational capacities. Funding support for the Institute is provided by tribal governments, government agencies, businesses and individuals.

The Great Tribal Leaders of Modern Times is a collection of broadcast quality video recordings of the oral histories of contemporary tribal leaders who have been active in the struggle for tribal sovereignty, self-determination, and treaty rights. The themes presented in these unique videos provide a rich resource that can be used by present and future generations of Tribes, students in Native American studies programs, and other interested groups. These histories are used to develop an academic curriculum. *The Great Tribal Leaders of Modern Times* curriculum is currently offered at Portland State University and Lewis and Clark College Graduate School of Education and is being prepared for use in high schools, colleges, and universities on the national level.



Southern Oregon University

Southern Oregon University (SOU) provides liberal arts and sciences programs; professional programs in business, education, and performing arts; and a cooperative program in nursing.

Admissions 541.552.6411, www.sou.edu/admissions

Career Center 541.552.6213, www.sou.edu/access/careers

Child Care 541.552.8224

Extended Programs 541.552.6331, www.sou.edu/ecp

Financial Aid 800.482.7672 or 541.552.6161, www.sou.edu/finaid

Housing 541.552.6371, www.sou.edu/housing

Nontraditional Students 541.552.8238, www.sou.edu/su/nontrad

Registrar 541.552.6600, www.sou.edu/registrar

Services for Students with Disabilities 541.552.6213, www.sou.edu/access/dss.html

Transfer 541.552.8106 or 541.552.6411, studentinfo.sou.edu/transfer

1250 Siskiyou Blvd.

Ashland, OR 97520

800.482.7672 or 541.552.6751

www.sou.edu

CONTACT OFFICE

Native American Programs

541.552.6751 or 541.552.8580

dwest@sou.edu

PROGRAMS AND ACTIVITIES

Native American Materials and Services a Library Priority

The Southern Oregon University (SOU) Library has a premier collection of materials relating to Native Americans of North America and has deemed the selection and acquisition of materials relating to North American Indians as a collecting focus (along with Shakespeariana).

The SOU Library has a large collection of Native American materials, with over 8,700 books and videos dealing with Native North America. The Library maintains subscriptions to 26 periodicals pertaining to Native Americans, and collects newsletters from the federally recognized tribes of Oregon. The Library also subscribes to the online database, HRAF Bibliography of Native North America.

Designated a center for Native American materials, the Library recently received substantial collections of Native American materials. Helen Redbird-Smith, an alumna of SOU and Professor Emeritus of Western Oregon University, donated an extraordinary collection of 1400 monographs, sound recordings, research papers, ephemera, reference materials, and documents relating to North American tribes. The Douglas Martin Collection contains over 1,000 books collected by this scholar of Indian-White relations during his lifetime.

The Library is involved in a digitization project to create the Southern Oregon Digital Archive (SODA) of materials relating to the ethnohistory and environment of the unique Siskiyou/Cascade/Klamath bioregion.

The First Nations Collection of SODA now numbers 400 web-accessible hard-to-find public domain documents, books, and articles relating to the indigenous peoples of this area. The collection has been developed in consultation with representatives from tribes. Some of the groups represented in SODA include the Alsea, Coos, Cow Creek Band of Umpqua, Hupa, Klamath, Modoc, Shasta, Siuslaw, Takelma, Tututni, and Yahuskin nations.

Recruitment & Retention

Recruitment efforts have been broadened and enhanced at SOU through the efforts of the Director of Native American Programs, in addition to the Native American Academic Coordinator. SOU offers both a 24-credit Minor and a 36-credit Certificate in Native American Studies, with an additional collaborative program with the School of Education to train 23 Native American teachers over the next four years through the auspices of a grant from the Federal Office of Indian Education. With the development of the Center for First Nations Studies, recruitment efforts have expanded to the International level within Indigenous populations. SOU participates in numerous high school and community visitations and maintains close regional interactions with the nearby Oregon tribal Education Departments and federally recognized Northern California tribes.

Specific support organizations and activities include the Native American Student Union (NASU), which is a member of the Multicultural Student Coalition. NASU annually hosts the fall Welcome Back Gathering and Dance, the Native American Ecological Education Symposium during winter term, the

spring Pow Wow during April's Native American Month, and the Native American Alcohol/Drug Abuse Treatment Symposium close to the end of spring term. Symposia are offered on a rotational basis at one per year. NASU meetings are held weekly, in conjunction with Community Night activities.

SOU hosts Konaway Nika Tillicum Native American Youth Academy, for grades 6-12 each summer. The Academy is an in-residence, early-intervention program for recruitment, retention, collegiate academic preparation, cultural relevancy, and leadership. The Academy is a collaborative effort between SOU and Oregon State University's American Indian Science and Engineering Society. Participation includes Oregon's nine federally recognized Tribal Education Departments, all Title III Indian Education programs, Johnson O'Malley programs, urban/rural American Indian programs, and National/International First Nations peoples.

SOU is represented at the annual Oregon Indian Education Association (OIEA) Conference each year. Further, SOU is represented at Oregon Indian Coalition on Postsecondary Education (OICPSE), the Oregon Indian Education Youth Conference, the Oregon/National Tribal Educational Contractors Association (OTECA), the National Indian Education Association, and the National Congress of American Indians. Currently both Native American Studies faculty are members of the Board of Directors for OIEA and participating members of the Oregon American Indian/Alaska Native Education Council.

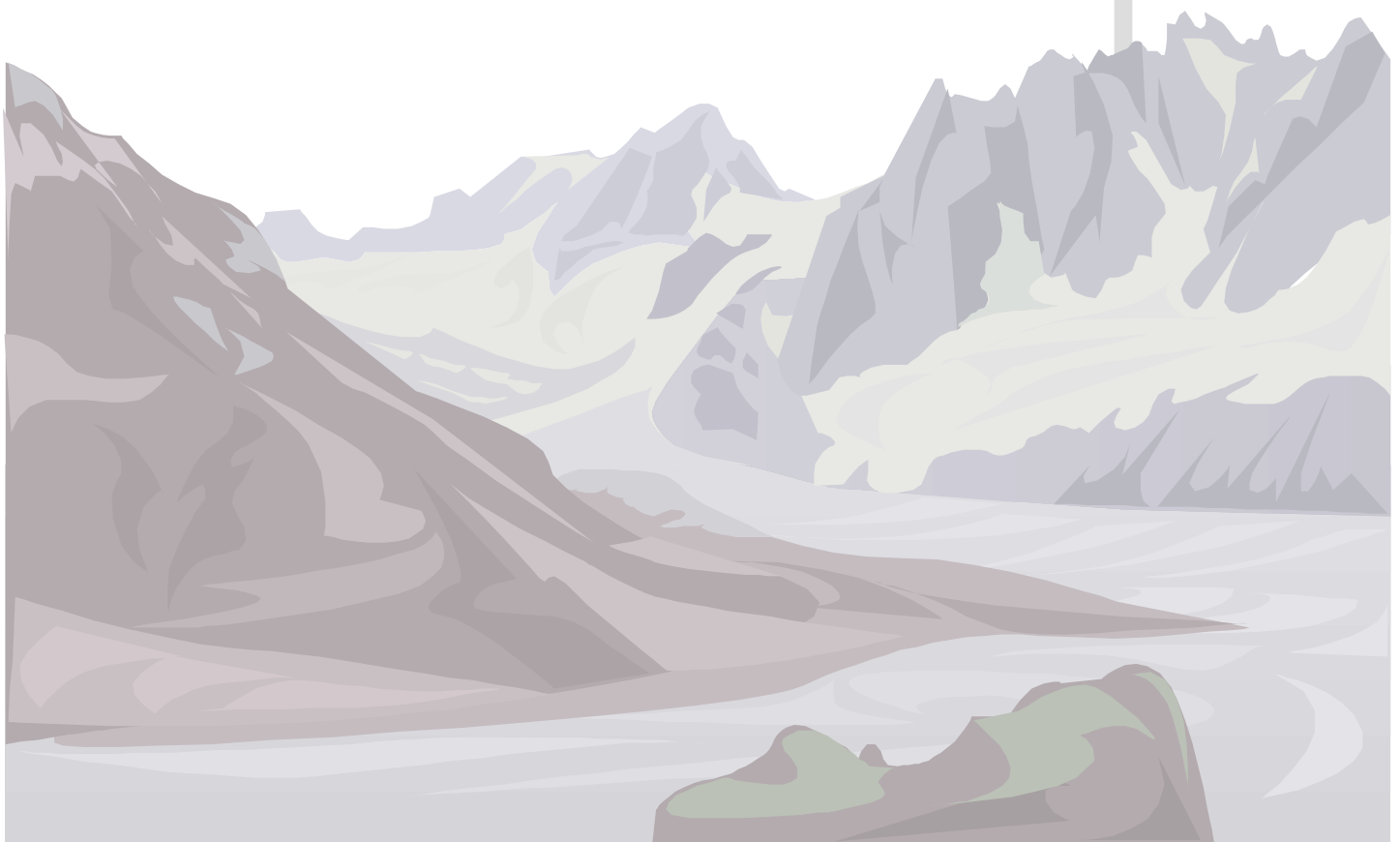
Dissolving Institutional Barriers

The Native American Advisory Council and the Board of Directors for the Center for First Nations Studies continue to assist SOU in identification and elimination of institutional barriers to student success. Membership consists of local American Indian community/tribal members, faculty, NASU officers, members of OICPSE, and OTECA. Faculty are assisting in the development of reflective curriculum in a number of areas, including teacher education and continuing licensure, utilizing coursework from the Native American Studies program.

The education, anthropology/archaeology, literature, social science, psychology, history, art, environmental science, music, and theater de-

partments are developing collaborative networking with tribal historians, culture and heritage resource persons, educational programs, county, state, and national historical societies, and individual community members, to expand and enhance education for and about North American Indians and indigenous peoples throughout the world.

SOU is developing access and opportunities for American Indians and First Nations peoples through active recruitment, supportive retention and graduation, as well as support for culturally relevant and appropriate employment. SOU is committed to the mission of cross-cultural and multi-cultural diversity in a consistent effort to meet these goals.



University of Oregon

The University of Oregon (UO) is a major liberal arts and sciences university with professional programs in architecture and allied arts, business, education, journalism, law, music and performing arts, and planning and public policy.

Admissions 800.232.3825 or 541.346.3201, admissions.uoregon.edu

Career Center 541.346.3235, uocareer.uoregon.edu

Child Care two centers

(CCDC) 541.346.4384, darkwing.uoregon.edu/~ccdc

(Spencer View) 541.346.7400, darkwing.uoregon.edu/~svinfo

Extended Programs 800.824.2714 or 541.346.4231, center.uoregon.edu

Financial Aid 800.760.6953 or 541.346.3221, financialaid.uoregon.edu

Housing 541.346.4277, housing.uoregon.edu

Nontraditional Students 541.346.0632, gladstone.uoregon.edu/~asuontra

Precollege Programs 541.346.3084, interact.uoregon.edu/tag

Registrar 541.346.3243, registrar.uoregon.edu

Services for Students with Disabilities 541.346.1155, ds.uoregon.edu

Student Support Services 541.346.3232 or 541.346.3226, als.uoregon.edu

Transfer 800.232.3825 or 541.346.3201, admissions.uoregon.edu/transfer.html

1217 University of Oregon
Eugene, OR 97403
541.346.1000
www.uoregon.edu

CONTACT OFFICE

Multicultural Affairs
541.346.3479
darkwing.uoregon.edu/~oma

PROGRAMS AND ACTIVITIES

The University of Oregon (UO) has established an institutionwide mandate to First Nations people in accordance with UO's overall commitment to diversity on campus and in the context of "Government to Government" relationships with sovereign Native American nations. This institutional mandate is based on the moral obligation UO has to Native peoples as well as the legal obligations inherent in American Indian sovereignty that both the institution and the tribes recognize as binding.

The UO Native American Initiative permeates the institution broadly and has principle points of focus in the following.

The President's Office

The president of UO established in 1998 a President's Native American Advisory Board. Consisting of the chairs of each of the nine federally recognized tribes of Oregon as well as other Native and non-Native leaders from both the Northwest and the nation, this board provides broad guidance on all aspects of the Native American Initiative. The president maintains direct relationships with each of the tribal chairs through both the executive assistant president and the president's liaison to the Northwest tribes. The latter individual serves also as the associate director of UO's Center for Indigenous Cultural Survival.

Center for Indigenous Cultural Survival (CICS)

CICS facilitates all aspects of the Native American Initiative. The director of the center serves as a senior advisor to the president and the president's staff. The scholarly focus of CICS includes the international context of indigenous peoples. Internships and areas of study include grassroots organization in indigenous communities, both in the United States and abroad. A certificate in Indigenous Cultural Survival is available through UO's International Studies program.

Coordinator for Native American Enrollment Services

Within its Office of Admissions, UO engages a full-time coordinator for Native American Enrollment Services. This individual is responsible for actively recruiting urban and reservation American Indian students, both in and out of state. Most of the out-of-state recruitment occurs in areas where the tribes hold aboriginal rights to the land that became Oregon and who are thus eligible for the OUS Residency by Aboriginal Right program, introduced and piloted first at UO. The coordinator for Native American Enrollment Services also coordinates UO's work with students and with tribes on tribal scholarships. This gives the tribes, as well as individual students, a person on campus who is well acquainted with the various forms of tribal financial aid and student needs.

Office of Multicultural Affairs (OMA)

OMA is the primary academic support service for students of color. Staffing consists of a number of individuals and one American Indian advisor who pro-

vides American Indian students with emotional and academic support. The advisor also reports quarterly to the tribes and serves as a focal point of information for American Indian students and tribes. Services are free and include academic advising, course selection, computer support, mentoring, tutoring, volunteer opportunities, and workshops. OMA works in cooperation with Southern Oregon University and Rogue Community College on the Konaway Nika Tillicum summer academy.

The UO Many Nations Longhouse

The Longhouse has provided Native American students, tribes, and community members with support services since the 1970s. The newly constructed Longhouse provides a large meeting area, kitchen, bathrooms, and other services needed for all to hold gatherings, classroom instruction and conferences. For more information call (541) 346-6262 or (541) 3346-6263.

American Indian Science and Engineering Society (AISES)

This society is designed to encourage the interest of American Indian students in the fields of science, engineering, and business. AISES provides both scholarships and mentoring support, as well as an annual two-day conference for college chapter leaders.

American Indian Business Leaders Association (AIBL)

Created jointly with UO and the Confederated Tribes of Warm Springs, AIBL is a national association that recognizes and develops American Indian

students who show an interest in business. The organization sponsors a national conference and also provides mentoring.

American Indian Faculty

The American Indian teaching faculty on campus have historically played an active role in recruiting and retaining American Indian students. Many faculty members serve as advisors and mentors to the American Indian students currently enrolled at UO. They actively involve students in all aspects of the university, advocate on their behalf, promote and encourage students to pursue graduate work and study abroad opportunities, and inform students about possible employment opportunities. At present, five American Indian faculty members teach at UO.

Ethnic Studies Department

UO's Ethnic Studies major is an interdisciplinary program that provides students with the opportunity to study and conduct research in the field of race relations, as it pertains primarily to the four main underrepresented ethnic groups in the United States: American Indian, African American, Asian/Pacific American, and Hispanic/Latino.

Indigenous Women's Group

This organization provides women students and faculty on campus with the opportunity to meet and discuss pertinent personal, professional, and academic issues. The group engages in such cultural activities as dancing and beading and also hosts potlucks each month. In the past, the group has organized a conference devoted to indigenous women's issues.

Native American Law Student Association (NALSA)

NALSA articulates and promotes the needs and goals of American Indian law students by fostering and encouraging professional competence. The organization helps students focus on the relationship of American Indian people with the U.S. legal structure. NALSA members attend local, regional, and national workshops and job fairs.

Native American Student Union (NASU)

NASU serves an important function in the American Indian community by working with students, community organizations, and Northwest tribes. In addition to recruiting American Indian students, NASU hosts two Pow Wows and a conference each year.

Native American Women's Research Interest Group (RIG)

RIG is the research arm of the Center for the Study of Women and Society. Many of its functions focus on the study and discussion of issues affecting American Indian women in the United States and abroad. Conferences, speaking engagements, and roundtable discussions have been the primary avenues of participation. RIG also provides funding for conference presentations and scholarly research by American Indian women.

Native Men's Support Group

This group provides American Indian men with an opportunity to discuss personal and academic issues in a supportive environment. The group is open to men of all ages and levels of education.

Northwest Indian Language Institute (NILI)

NILI supplies on-campus and on-site linguistic training for tribes concerned about language preservation. The institute hosts an on-campus summer program that provides interested individuals access to both research materials and faculty expertise. Currently, NILI is providing services to the Confederated Tribes of the Warm Springs, Confederated Tribes of the Umatilla, the Klamath Tribes, the Lower Elwha Klallam Tribe, and the Spokane Tribe of Indians.

Sapsik'walá Program

As part of the UO Native American Initiative, the goal of the federally funded Sapsik'walá Program is to prepare American Indian teachers whose knowledge, skills, and cultural sensitivity will bring about long-term, much needed improvements in the educational experiences of American Indian youth. Specific information about the program is available at <http://education.uoregon.edu> (under scholarships), or by calling Pat Rounds, Sapsik'walá Program Director, at (541) 346-2454.



Western Oregon University

Western Oregon University (WOU) provides programs in liberal arts and sciences and professional programs in education, business, and public services.

345 N. Monmouth Ave.
Monmouth, OR 97361
877.877.1593 or 503.838.8000
www.wou.edu

Admissions 877.877.1593 or 503.838.8211, www.wou.edu/core/admissions.html

Career Center 503.838.8432, www.wou.edu/student/career

Child Care 503.838.8784

Extended Programs 800.451.5767 or 503.838.8483, www.wou.edu/provost/extprogram

Financial Aid 877.877.1593 or 503.838.8475, www.wou.edu/student/finaid

Housing 503.838.8311, www.wou.edu/student/residences

Nontraditional Students 503.838.8514

Registrar 503.838.8327, www.wou.edu/provost/registrar

Services for Students with Disabilities 503.838.8250, www.wou.edu/student/disability

Student Enrichment Program 503.838.8550, www.wou.edu/provost/se

Transfer 877.877.1593 or 503.838.8211, www.wou.edu/student/admissions/transferstudents.html

CONTACT OFFICE

Multicultural Student
Services and Programs
503.838.8195
mssp@wou.edu

PROGRAMS AND ACTIVITIES

Multicultural Student Services and Programs (MSSP)

MSSP's primary responsibility is the retention of students of color at Western Oregon University (WOU). In addition, MSSP assists the Office of Admissions in the recruitment of students of color.

MSSP coordinates programs that assist first generation, low income, and students of color, such as Destination: Education, a program that focuses on Early Awareness for 9th & 10th graders, and Making College Happen; a program that focuses on assisting Seniors interested in attending WOU through the college process. MSSP incorporates special interest sessions focused on the needs of students of color in each of the admissions recruitment programs (i.e., Saturday Visits, Preview Day, and Criminal Justice Careers Day). Also,

MSSP expands the recruitment mailing list to include contact people from agencies and programs that work with the Native American community, such as the Oregon Tribes Employment Assistance/Higher Education Directory.

Multicultural Student Union (MSU) & Movimiento Estudiantil Chicanos de Aztlan (MEChA)

MSSP expands activities and support for students of color. The director of MSSP advises the Multicultural Student Union (MSU) and Movimiento Estudiantil Chicanos de Aztlan (MEChA). These student groups collaborate to offer a variety of programming throughout the year. Their annual programs include: Dia de los Muertos, MSU Pow-Wow, African American Awareness Celebration, Women of

Color Celebration, Nuestra Fiesta Latina, Chicanito Tour, and Chicano Week-Voces de la Raza. These groups serve as a source of support for students of color. Because of the impact these organizations have on campus and surrounding communities, they submit an annual budget and receive funds to cover yearly activities and events.

Student Enrichment Program (SEP)

MSSP works closely with WOU's Student Enrichment Program. SEP is a federally funded student support service Trio Program, which provides academic assistance and support to students who meet specific eligibility guidelines. Both offices collaborate to ensure that students who will benefit from such services are getting their needs met.

Diversity Achievement Award Program

MSSP coordinates the Diversity Achievement Award Program which includes the selection of award recipients as well as teaching the Diversity Scholars Class.



Community College Transfer*

TRANSFER STUDENT WEB SITES

Joint Boards Articulation Commission, www.ous.edu/aca/jbac.html
Guidelines for the AA/OT Degree, www.ous.edu/aca/transferdeg.html

OUS TRANSFER ADMISSION

EOU Admissions, 800.452.8639 or 541.962.3393,
www2.eou.edu/admissions/transfer.htm

OIT Admissions, 800.422.2017 or 541.885.1150,
www.oit.edu/adms/3

OSU Admissions, 800.291.4192 or 541.737.4411
www.oregonstate.edu/admissions/transfer.html

PSU Admissions, 800.547.8887 or 503.725.3511
www.pdx.edu/admissions/transfer.html

SOU Admissions, 541.552.6411
studentinfo.sou.edu/transfer

UO Admissions, 800.232.3825 or 541.346.3201
admissions.uoregon.edu/transfer.html

WOU Admissions, 877.877.1593 or 503.838.8211
www.wou.edu/student/admissions/transferstudents.html

PROGRAMS AND ACTIVITIES

Thousands of students every year enter the Oregon University System (OUS) after first having attended an Oregon community college. A number of “transfer routes” from community colleges have been established in order to better prepare students for academic work at a four-year campus. The following information describes some of the possibilities that exist for transfer students.

Transfer Without Degree

A traditional way that students have used community college attendance en route to a four-year bachelor’s degree is to attend their local community college part- or full-time for a year or two (or more) while primarily focusing on general education courses.

When applying for admission to the four-year campus, students with a minimum number of community

college credits (typically 36) are evaluated on the basis of their community college academic record, not their high school work. Students may transfer with or without completing a transfer program at the community college.

Dual Enrollment Opportunities

A variety of programs exist that allow students to be simultaneously admitted to and/or enrolled in both a community college and a university, allowing an expanded selection of course offerings, student services, flexibility in scheduling with access to more classes, and it makes it easier to transfer to the four-year campus. For the specifics on the availability of dual enrollments at your campus, please contact the admissions office.

Oregon Transfer Module (OTM) 45 Credit (1 year) program

Students may choose to transfer based on the successful completion of an Oregon Transfer Module. It is a 45 credit subset of general education courses representing the first year of general education coursework, that is accepted at all of Oregon's public campuses. It may be ideal for students who wish to transfer to a four-year institution after one year, but do not want to risk a loss of credits. Please see an advisor to find out which courses at your community college count towards the Oregon Transfer Module. For an overview of requirements, please visit the website www.ous.edu/aca/OTM_8_22_05.pdf.

Oregon Transfer Degrees 90 Credit (2 year) degrees

Associate of Arts/Oregon Transfer Degree (AA/OT)

Community college students transferring with an AA/OT degree have met the lower-division general education requirements for the OUS campus to which they transfer (any upper-division general education requirements must be met after transfer) AND they may register at the OUS campus as a junior.

Please consult your community college advisor or your course catalog for the specific requirements at your campus. The general guidelines for the degree are available on the Web at www.ous.edu/aca/transferdeg.html.

Associate of Science/Oregon Transfer Degree in Business (AS/OT-Bus)

This program may be ideal for students interested in pursuing a Business degree at an OUS campus. Like the AA/OT degree, students with the two-year AS/OT-Bus degree have met the lower-division general education requirements for the OUS campus to which they transfer AND they may register at the OUS campus as a junior.

Students pursuing an AS/OT-Bus are advised to coordinate their degree plans with their community college advisor AND an advisor in the business school/program at the OUS institution to which they will transfer. **Admission to an OUS business school/program is NOT guaranteed upon completion of an AS/OT-Bus.**

The general guidelines for this degree are available on the Web at www.ous.edu/aca/ASOT-Bus.pdf.

* Some information adapted from an article by Jim Arnold, 2003

Oregon Student Assistance Commission & Financial Aid

PROGRAMS AND ACTIVITIES

The Oregon Student Assistance Commission (OSAC) is the state agency that administers the Oregon Opportunity Grant, a need-based grant for Oregon resident undergraduates, more than 320 privately funded scholarship programs on behalf of donors, and many other public programs that benefit students. OSAC also administers Access to Student assistance Programs In Reach of Everyone (ASPIRE) that coordinates volunteer-mentors in 74 Oregon high schools. OSAC staff has the responsibility for providing information and training about student financial aid to high school counselors, students and their families, and to the general public as well as providing leadership within the college student financial aid community and scholarship design and administrative services to prospective donors.

Grants and Scholarships Division

The Grants and Scholarships Division administers state-sponsored grant and loan programs, federal programs, and private scholarship programs. The Grants and Scholarships Division currently administers the following programs. More information on all OSAC programs can be found at the OSAC website: www.oregon.gov/osac.

1. Oregon Opportunity Grant for financially needy undergraduate Oregon residents.
2. Privately funded scholarships for more than 320 need-based and merit-based programs.
3. The federal Chafee Education and Training Scholarship for former foster youths
4. The federal Robert C. Byrd Honors Program Scholarship
5. Individual Education Accounts (IEA) in the JOBS Plus Program
6. Oregon Troops to Teachers Program
7. Deceased and Disabled Public Safety Officer Grant
8. Barber and Hairdresser Grant
9. Oregon Youth Conservation Corps (OYCC) Program
10. Oregon Rural Health Services Loan Repayment Program
11. Oregon Nursing Services Program for nurses working in critical shortage areas
12. Access to Student assistance Programs In Reach of Everyone (ASPIRE) – high school based mentoring program for postsecondary access
13. The Employer Tax Credit (ETC) Program for Oregon businesses with up to 250 employees

OSAC CONTACT INFO

1500 Valley River Dr, #100
Eugene, OR 97401
800.452.8807 ext. 7395
or 541.687.7395
www.oregon.gov/osac

LOCAL FINANCIAL AID SITES

OUS Enrollment Services
Managing Costs
www.ous.edu/ps_costs.htm

OSAC - Get College Funds
www.getcollegefunds.org

NATIONAL FINANCIAL AID SITES*

CollegeBoard
Scholarships, Financing, Loans
www.collegeboard.com/pay

FinAid!
www.finaid.org

Free Application for Federal Student Aid (FAFSA)
www.fafsa.ed.gov

Federal Student Aid Info
studentaid.ed.gov

* The financial aid websites are included for informational purposes. The Oregon University System is not responsible for the accuracy of information provided by these organizations.

OAR 580-010-0037

Residence classification of members of Oregon Tribes

The Oregon State Board of Higher Education at its July 16, 1998, meeting approved the following rule pertaining to residency classification for members of Oregon tribes.

OAR 580-010-0037

(1) Students who are enrolled as members of federally recognized tribes of Oregon or who are enrolled members of a Native American tribe which had traditional and customary tribal boundaries that included parts of the state of Oregon or which had ceded or reserved lands within the state of Oregon shall be assessed resident tuition regardless of their state of residence.

(2) For purposes of this rule, the federally recognized tribes of Oregon are:

- (a) Burns Paiute Tribe
- (b) Confederated Tribes of Coos, Lower Umpqua and Siuslaw
- (c) Confederated Tribes of Grand Ronde Community of Oregon
- (d) Confederated Tribes of Siletz Indians of Oregon
- (e) Confederated Tribes of the Umatilla Indian Reservation
- (f) Confederated Tribes of Warm Springs Indian Reservation
- (g) Coquille Indian Tribe
- (h) Cow Creek Band of Umpqua Indians
- (i) Klamath Tribes

(3) For purposes of this rule, the Native American tribes which had traditional and customary boundaries that included parts of the state of Oregon or which had ceded or reserved lands within the state of Oregon are:

- (a) CALIFORNIA
 - (A) Benton Paiute Tribe
 - (B) Big Bend Rancheria
 - (C) Big Lagoon Rancheria
 - (D) Blue Lake Rancheria
 - (E) Bridgeport Indian Colony
 - (F) Cedarville Rancheria
 - (G) Fort Bidwell Indian Tribe
 - (H) Hoopa Valley Tribe
 - (I) Karuk Tribe of California
 - (J) Likely Rancheria
 - (K) Lookout Rancheria
 - (L) Lytton Rancheria
 - (M) Melochundum Band of Tolowa Indians
 - (N) Montgomery Creek Rancheria
 - (O) Pit River Tribe
 - (P) Quartz Valley Indian Community
 - (Q) Redding Rancheria
 - (R) Roaring Creek Rancheria
 - (S) Smith River Rancheria
 - (T) Susanville Rancheria
 - (U) Tolowa-Tututni Tribe
 - (V) Winnemucca Colony
 - (W) XL Ranch
 - (X) Yurok Tribe
- (b) IDAHO
 - (A) Nez Perce Tribe of Idaho
 - (B) Shoshoni-Bannock Tribes

FEDERALLY RECOGNIZED OREGON TRIBES

Burns Paiute Tribe
541.573.2088
www.burnspaiute-nsn.gov

Confederated Tribes of Coos, Lower Umpqua, and Siuslaw
541.888.9577
www.ctclusi.org

Confederated Tribes of Grand Ronde Community of Oregon
503.879.5211
www.grandronde.org

Confederated Tribes of Siletz Indians of Oregon
541.444.2532
www.ctsi.nsn.us

Confederated Tribes of the Umatilla Indian Reservation
541.276.3165
www.umatilla.nsn.us

Confederated Tribes of Warm Springs Indian Reservation
541.553.1161
www.warmsprings.com

Coquille Indian Tribe
541.756.0904
www.coquilletribe.org

Cow Creek Band of Umpqua Indians
541.672.9405
www.cowcreek.com

Klamath Tribes
541.783.2219
www.klamathtribes.org

- (c) NEVADA
 - (A) Duck Valley Shoshone-Paiute Tribes
 - (B) Fallon Paiute-Shoshone Tribe
 - (C) Fort McDermitt Paiute-Shoshone Tribe
 - (D) Lovelock Paiute Tribe
 - (E) Pyramid Lake Paiute Tribe
 - (F) Reno-Sparks Indian Colony
 - (G) Summit Lake Paiute Tribe
 - (H) Walker River Paiute Tribe
 - (I) Winnemucca Indian Colony
 - (J) Yerington Paiute Tribe
 - (d) OKLAHOMA
 - (A) Modoc Tribe of Oklahoma
 - (e) WASHINGTON
 - (A) Chehalis Community Council
 - (B) Colville Confederated Tribes
 - (C) Quinalt Indian Nation
 - (D) Shoalwater Bay Tribe
 - (E) Yakama Indian Nation
- (4) A student seeking to be assessed resident tuition under the provisions of this rule shall submit, following procedures prescribed by the OUS institution where the student seeks to enroll, a photocopy of tribal enrollment which documents tribal membership.



Oregon University System Websites

Oregon University System Home Page

www.ous.edu

This is the main page of the Oregon University System.

Academic Program Database

www.ous.edu/aca/acadprog.html

This features an up-to-date database of all associate, baccalaureate, master's, and doctoral degree programs offered at the seven Oregon University System institutions and the affiliated institution (Oregon Health & Science University).

Enrollment Services for Prospective Students

www.ous.edu/ps_home.htm

Information on admissions, financial aid, and programs for all prospective students are offered at this site. Guidelines for determining Oregon residency are also available from this site.

Lift Every Voice

www.ous.edu/lev

This is the on-line version of the diversity and multicultural newsletter of the Oregon University System. The newsletter provides a forum for the sharing of information relating to diversity considerations among OUS institutions and with interested individuals and community organizations.

CAMPUS WEBSITES

Eastern Oregon University
www.eou.edu

Oregon Institute of Technology
www.oit.edu

Oregon State University
www.orst.edu

Portland State University
www.pdx.edu

Southern Oregon University
www.sou.edu

University of Oregon
www.uoregon.edu

Western Oregon University
www.wou.edu



Oregon University System
PO Box 3175
Eugene, OR 97403-0175
www.ous.edu

