



Oregon University System
2010 Fact Book

DEGREES AWARDED

Degrees Awarded by Institution 1979-80 through 2009-10

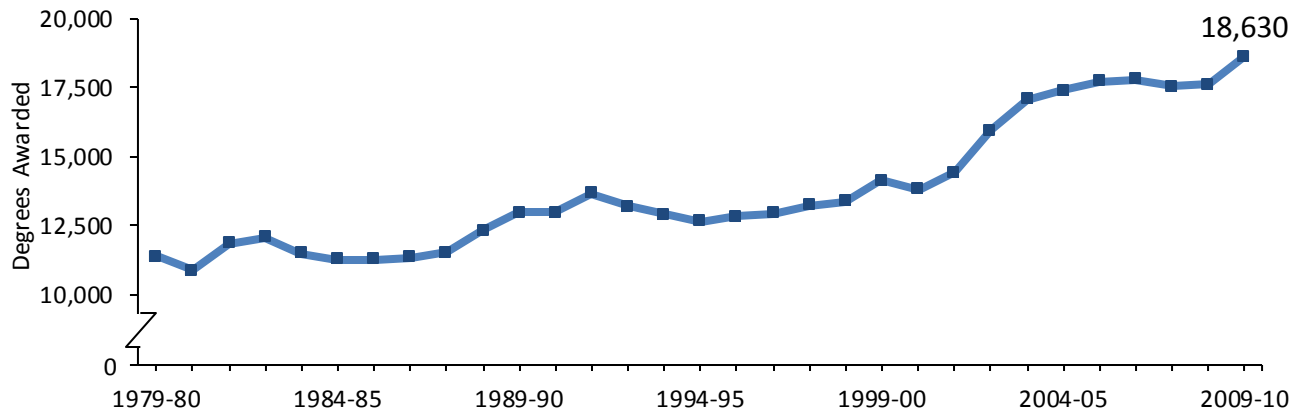
Includes Bachelor's, Master's, Doctoral, and Professional Degrees

	EOU	OIT	OSU	PSU	SOU	UO	WOU	OUS Total	OHSU	Grand Total
1979-80	180	147	3,338	2,060	765	3,618	846	10,954	431	11,385
1980-81	191	153	3,430	1,904	639	3,477	684	10,478	399	10,877
1981-82	195	203	3,802	2,188	646	3,768	620	11,422	457	11,879
1982-83	244	228	3,940	2,249	623	3,728	652	11,664	423	12,087
1983-84	207	263	3,673	2,127	624	3,665	593	11,152	348	11,500
1984-85	298	261	3,677	2,129	600	3,382	564	10,911	377	11,288
1985-86	270	305	3,651	2,135	682	3,345	565	10,953	335	11,288
1986-87	303	314	3,596	2,232	648	3,341	596	11,030	341	11,371
1987-88	278	377	3,424	2,301	614	3,595	604	11,193	331	11,524
1988-89	316	354	3,489	2,554	698	3,840	725	11,976	365	12,341
1989-90	388	392	3,522	2,673	816	4,033	786	12,610	390	13,000
1990-91	313	357	3,729	2,570	745	3,963	904	12,581	393	12,974
1991-92	332	331	3,917	2,764	761	4,341	783	13,229	441	13,670
1992-93	373	285	3,679	2,643	824	4,101	868	12,773	417	13,190
1993-94	389	295	3,510	2,589	704	4,031	881	12,399	507	12,906
1994-95	344	250	3,387	2,637	676	3,992	858	12,144	531	12,675
1995-96	372	271	3,312	2,817	693	3,878	970	12,313	541	12,854
1996-97	345	265	3,151	2,907	805	4,044	869	12,386	561	12,947
1997-98	381	276	3,242	3,006	740	4,194	847	12,686	547	13,233
1998-99	391	279	3,257	3,129	859	3,996	929	12,840	544	13,384
1999-00	429	330	3,386	3,271	967	4,219	990	13,592	556	14,148
2000-01	448	328	3,304	3,432	1,008	3,985	783	13,288	527	13,815
2001-02	458	360	3,459	3,488	1,030	4,010	924	13,729	683	14,412
2002-03	580	369	3,894	3,928	985	4,534	984	15,274	670	15,944
2003-04	660	410	4,113	4,390	1,073	4,593	1,110	16,349	721	17,070
2004-05	607	496	4,213	4,496	1,005	4,839	1,038	16,694	689	17,383
2005-06	611	461	4,290	4,528	1,036	5,036	1,012	16,974	757	17,731
2006-07	673	492	4,222	4,819	986	4,999	925	17,116	669	17,785
2007-08	701	438	4,232	4,840	923	4,825	938	16,897	627	17,524
2008-09	633	495	4,254	4,970	896	4,693	1,003	16,944	652	17,596
2009-10	685	497	4,490	5,207	1,000	5,036	1,005	17,920	710	18,630

Degree totals do not include associate's degrees or certificates.

Sources: OUS Institutional Research, OEPP degree summaries, HEGIS and IPEDS Completions Surveys.

Degrees Awarded 1979-80 through 2009-10



Degrees and Certificates Awarded by Racial/Ethnic Group and Gender, 2009-10

		American Indian or Alaska Native	Asian	Black or African American	Hispanic, Any Race	Native Hawaiian or Pacific Islander
EOU	Men	1	7	8	12	-
	Women	9	12	5	16	3
	Total	10	19	13	28	3
OIT	Men	1	7	3	16	1
	Women	4	20	2	15	1
	Total	5	27	5	31	2
OSU	Men	15	169	22	100	17
	Women	30	159	30	106	18
	Total	45	328	52	206	35
PSU	Men	24	151	65	108	15
	Women	40	209	76	193	17
	Total	64	360	141	301	32
SOU	Men	7	12	7	12	5
	Women	12	14	8	33	5
	Total	19	26	15	45	10
UO	Men	37	130	31	76	17
	Women	42	147	35	121	23
	Total	79	277	66	197	40
WOU	Men	4	6	12	31	4
	Women	9	22	5	53	-
	Total	13	28	17	84	4
OUS Total	Men	89	482	148	355	59
	Women	146	583	161	537	67
	Total	235	1,065	309	892	126
OHSU	Men	3	20	1	6	-
	Women	6	52	9	16	2
	Total	9	72	10	22	2
Grand Total	Men	92	502	149	361	59
	Women	152	635	170	553	69
	Total	244	1,137	319	914	128

Sources: OUS Institutional Research, IPEDS Completions.

continued...

Degrees and Certificates Awarded by Racial/Ethnic Group and Gender, 2009-10

...continued

		Two or More Races	Minority Subtotal	White	Nonresident Alien	Unknown	Total
EOU	Men	-	28	225	5	12	270
	Women	-	45	445	8	41	539
	Total	-	73	670	13	53	809
OIT	Men	8	36	235	5	20	296
	Women	6	48	235	5	8	296
	Total	14	84	470	10	28	592
OSU	Men	7	330	1,673	111	221	2,335
	Women	9	352	1,754	98	195	2,399
	Total	16	682	3,427	209	416	4,734
PSU	Men	7	370	1,598	188	239	2,395
	Women	9	544	2,422	139	333	3,438
	Total	16	914	4,020	327	572	5,833
SOU	Men	-	43	358	18	32	451
	Women	-	72	610	15	71	768
	Total	-	115	968	33	103	1,219
UO	Men	53	344	1,898	141	161	2,544
	Women	56	424	2,150	168	209	2,951
	Total	109	768	4,048	309	370	5,495
WOU	Men	9	66	343	19	17	445
	Women	10	99	658	23	21	801
	Total	19	165	1,001	42	38	1,246
OUS Total	Men	84	1,217	6,330	487	702	8,736
	Women	90	1,584	8,274	456	878	11,192
	Total	174	2,801	14,604	943	1,580	19,928
OHSU	Men	4	34	200	7	19	260
	Women	9	94	405	15	28	542
	Total	13	128	605	22	47	802
Grand Total	Men	88	1,251	6,530	494	721	8,996
	Women	99	1,678	8,679	471	906	11,734
	Total	187	2,929	15,209	965	1,627	20,730

Sources: OUS Institutional Research, IPEDS Completions.

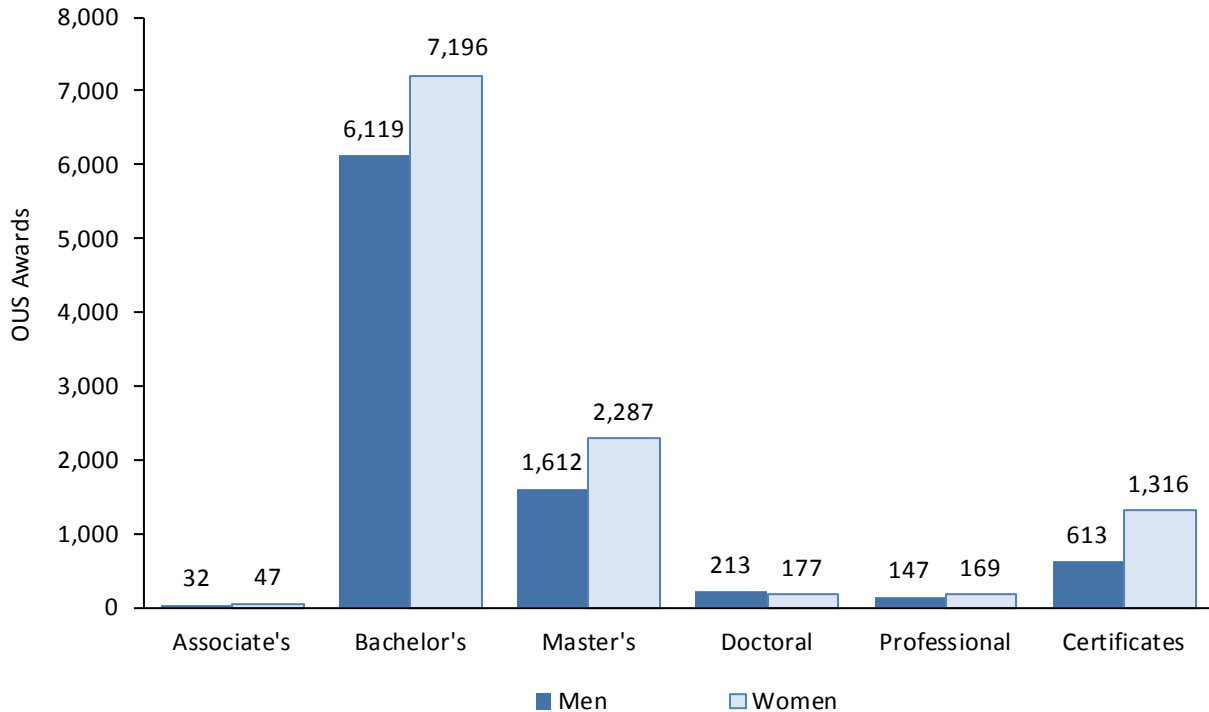
Summary of Degrees and Certificates Awarded, 2009-10

	Associate's	Bachelor's	Master's	Doctoral	Professional	Certificates ¹	Total
EOU	-	572	113	-	-	124	809
OIT	79	495	2	-	-	16	592
OSU	-	3,453	727	179	131	244	4,734
PSU	-	3,532	1,625	50	-	626	5,833
SOU	-	720	280	-	-	219	1,219
UO	-	3,735	955	161	185	459	5,495
WOU	-	808	197	-	-	241	1,246
OUS Total	79	13,315	3,899	390	316	1,929	19,928
OHSU	-	299	169	48	194	92	802
Grand Total	79	13,614	4,068	438	510	2,021	20,730

¹ A formal award, distinct from a degree, certifying the satisfactory completion of an instructional program or course of study. Certificate counts consist primarily of teacher education certificates and postbaccalaureate awards.

Sources: OUS Institutional Research, IPEDS Completions.

OUS Total Degrees and Certificates Awarded 2009-10 Men Compared to Women



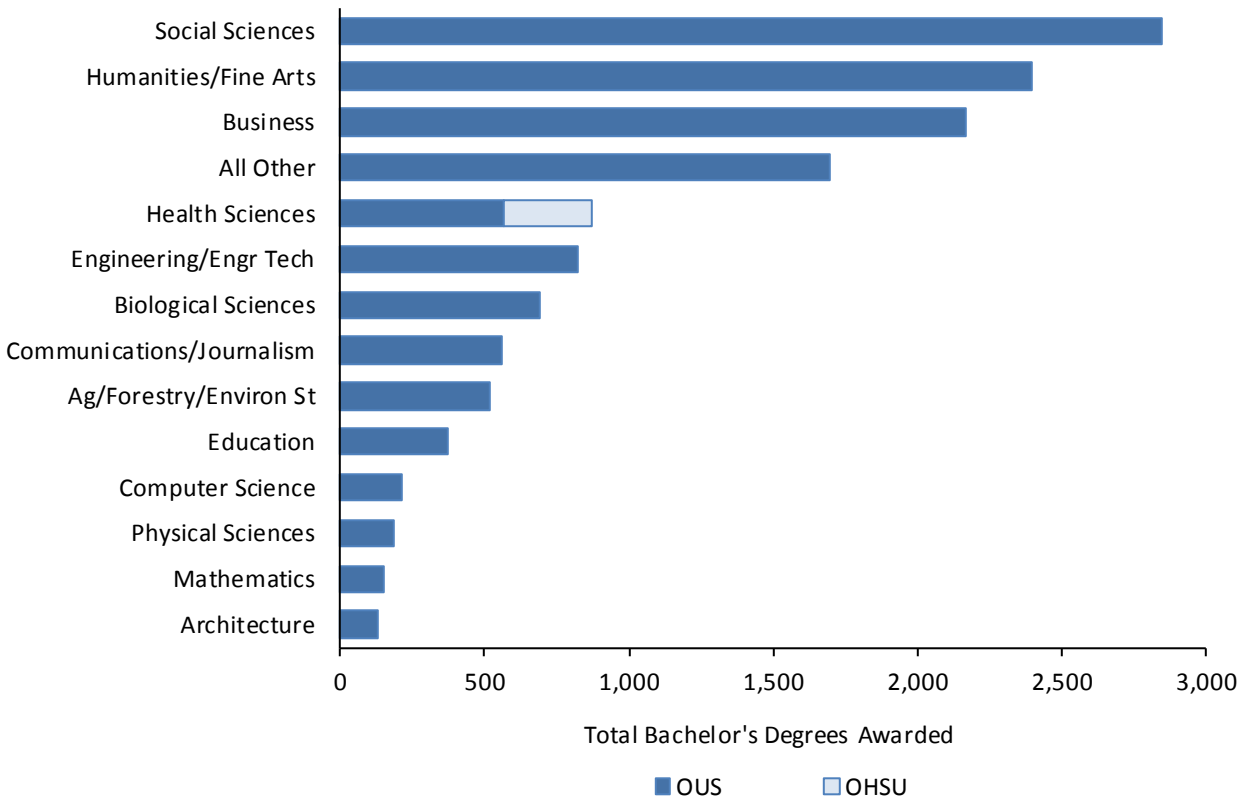
Bachelor's Degrees Awarded by Discipline 2009-10 Compared to 1999-00

Discipline	2009-10			1999-00		
	OUS	OUS %	OHSU	OUS	OUS %	OHSU
Agriculture/Forestry/Environmental Studies	516	3.9%	-	532	5.3%	-
Architecture	130	1.0%	-	91	0.9%	-
Biological Sciences	692	5.2%	-	430	4.3%	-
Business	2,169	16.3%	-	1,532	15.4%	-
Communications/Journalism	560	4.2%	-	350	3.5%	-
Computer Science	212	1.6%	-	240	2.4%	-
Education	375	2.8%	-	437	4.4%	-
Engineering/Engineering Technologies	819	6.2%	-	620	6.2%	-
Health Sciences	569	4.3%	299	319	3.2%	297
Humanities/Fine Arts	2,393	18.0%	-	1,713	17.2%	-
Mathematics	149	1.1%	-	66	0.7%	-
Physical Sciences	186	1.4%	-	152	1.5%	-
Social Sciences	2,847	21.4%	-	2,418	24.2%	-
All Other ¹	1,698	12.8%	-	1,072	10.8%	-
Total	13,315	100.0%	299	9,972	100.0%	297

¹ "Other" includes degrees awarded in area, ethnic, cultural, gender, and group studies; family and consumer sciences/human sciences; multi/interdisciplinary studies; parks, recreation, leisure, and fitness studies; science technologies/technicians; homeland security, law enforcement, firefighting, and related protective services; and public administration and social service professions.

Sources: OUS Institutional Research, IPEDS Completions.

Bachelor's Degrees Awarded by Discipline, 2009-10



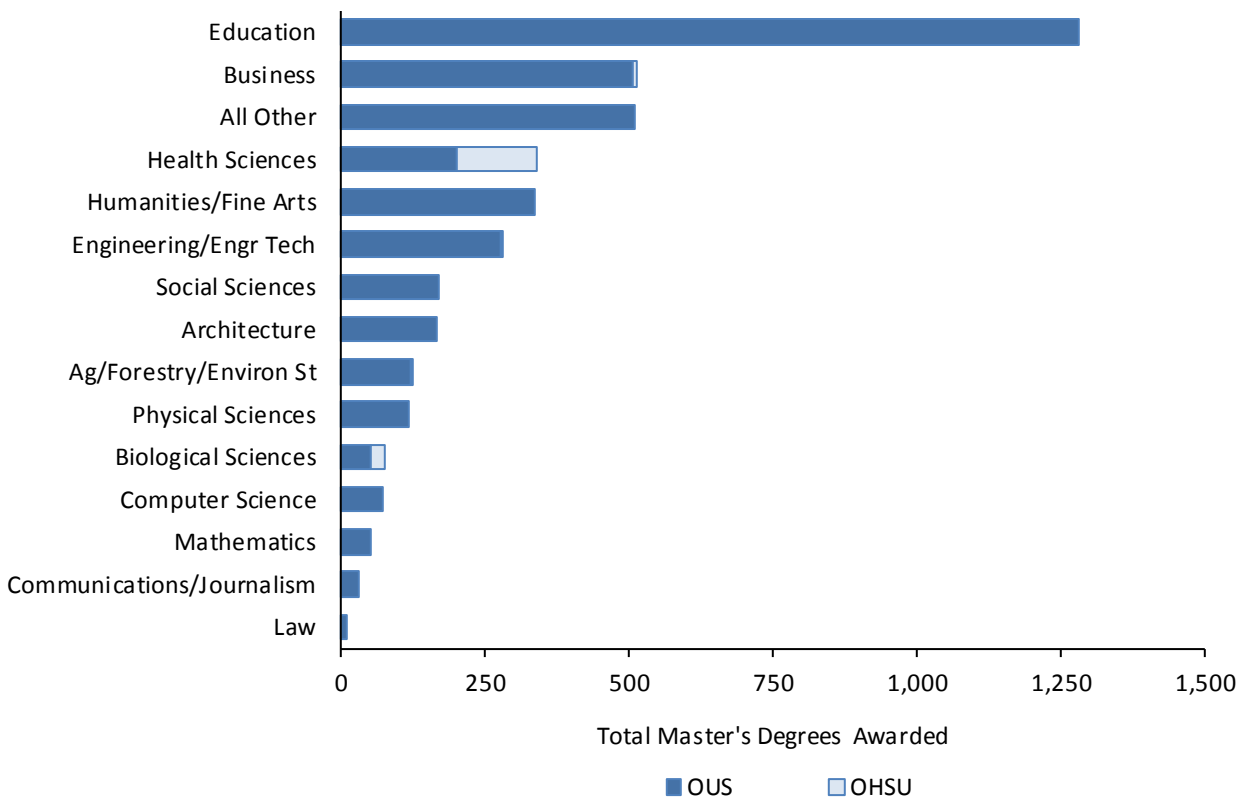
Master's Degrees Awarded by Discipline 2009-10 Compared to 1999-00

Discipline	2009-10			1999-00		
	OUS	OUS %	OHSU	OUS	OUS %	OHSU
Agriculture/Forestry/Environmental Studies	121	3.1%	2	103	3.4%	-
Architecture	166	4.3%	-	128	4.2%	-
Biological Sciences	52	1.3%	22	30	1.0%	-
Business	507	13.0%	5	383	12.5%	-
Communications/Journalism	31	0.8%	-	17	0.6%	-
Computer Science	71	1.8%	-	74	2.4%	-
Education	1,279	32.8%	-	1,185	38.6%	-
Engineering/Engineering Technologies	275	7.1%	3	174	5.7%	-
Health Sciences	202	5.2%	137	115	3.7%	70
Humanities/Fine Arts	337	8.6%	-	238	7.8%	-
Law	11	0.3%	-	-	-	-
Mathematics	52	1.3%	-	39	1.3%	-
Physical Sciences	117	3.0%	-	66	2.2%	-
Social Sciences	168	4.3%	-	146	4.8%	-
All Other ¹	510	13.1%	-	370	12.1%	-
Total	3,899	100.0%	169	3,068	100.0%	70

¹ "Other" includes degrees awarded in area, ethnic, cultural, gender, and group studies; family and consumer sciences/human sciences; multi/interdisciplinary studies; parks, recreation, leisure, and fitness studies; science technologies/technicians; homeland security, law enforcement, firefighting, and related protective services; and public administration and social service professions.

Sources: OUS Institutional Research, IPEDS Completions.

Master's Degrees Awarded by Discipline, 2009-10



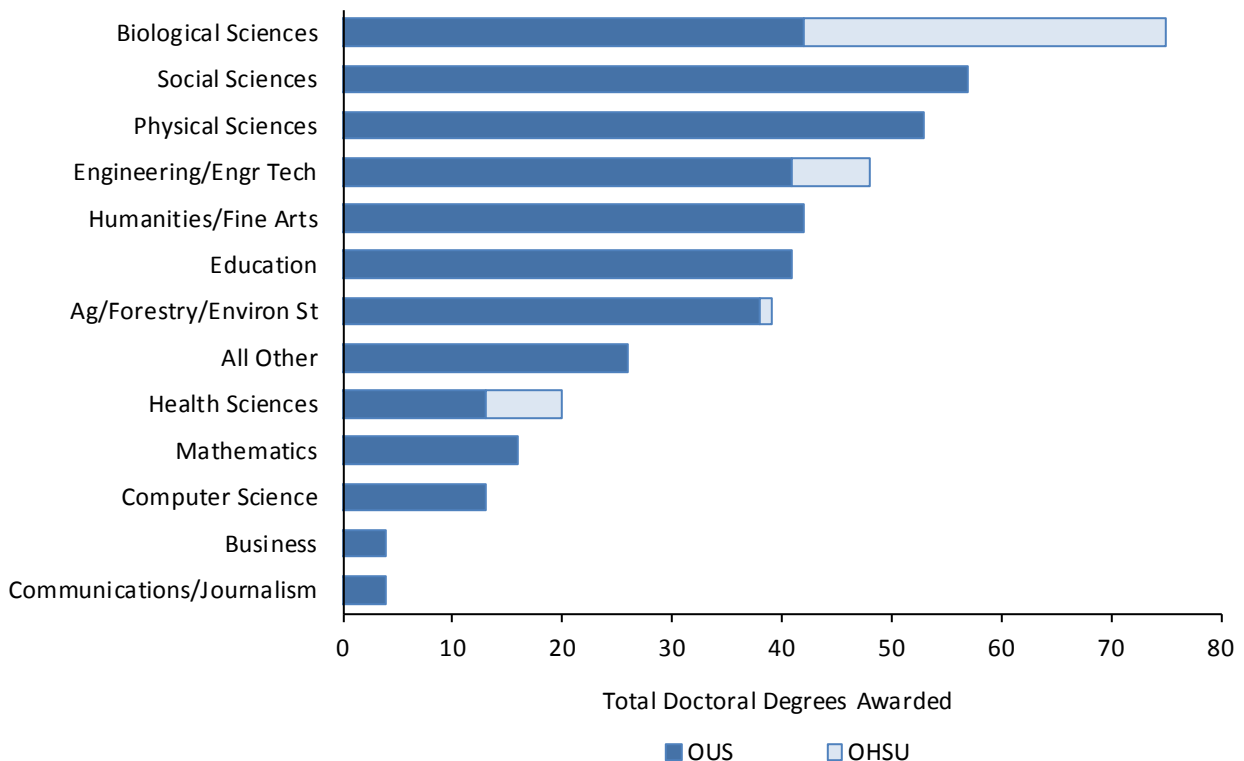
Doctoral Degrees Awarded by Discipline 2009-10 Compared to 1999-00

Discipline	2009-10			1999-00		
	OUS	OUS %	OHSU	OUS	OUS %	OHSU
Agriculture/Forestry/Environmental Studies	38	9.7%	1	37	11.3%	-
Biological Sciences	42	10.8%	33	34	10.4%	-
Business	4	1.0%	-	5	1.5%	-
Communications/Journalism	4	1.0%	-	3	0.9%	-
Computer Science	13	3.3%	-	3	0.9%	-
Education	41	10.5%	-	43	13.1%	-
Engineering/Engineering Technologies	41	10.5%	7	14	4.3%	-
Health Sciences	13	3.3%	7	9	2.8%	38
Humanities/Fine Arts	42	10.8%	-	37	11.3%	-
Mathematics	16	4.1%	-	19	5.8%	-
Physical Sciences	53	13.6%	-	56	17.1%	-
Social Sciences	57	14.6%	-	38	11.6%	-
All Other ¹	26	6.7%	-	29	8.9%	-
Total	390	100.0%	48	327	100.0%	38

¹ "Other" includes degrees awarded in area, ethnic, cultural, gender, and group studies; family and consumer sciences/human sciences; multi/interdisciplinary studies; parks, recreation, leisure, and fitness studies; science technologies/technicians; homeland security, law enforcement, firefighting, and related protective services; and public administration and social service professions.

Sources: OUS Institutional Research, IPEDS Completions.

Doctoral Degrees Awarded by Discipline, 2009-10



Professional Degrees Awarded by Discipline 2009-10 Compared to 1999-00

Discipline	2009-10			1999-00		
	OUS	OUS %	OHSU	OUS	OUS %	OHSU
Health Sciences						
Dentistry (D.D.S., D.M.D.)	-	-	71	-	-	68
Medicine (M.D.)	-	-	123	-	-	83
Nursing (D.N.P.) ¹	-	-	-	-	-	-
Pharmacy (PharmD) ²	88	27.8%	-	7	3.1%	-
Veterinary Medicine (DVM)	43	13.6%	-	34	15.1%	-
Law	185	58.5%	-	184	81.8%	-
Total	316	100.0%	194	225	100.0%	151

¹ Oregon Health & Science University introduced the professional nursing program in 2007.

² Oregon State University introduced the professional PharmD program in 1999. Before that time, a limited number of PharmD degrees were awarded through a postbaccalaureate program.

Sources: OUS Institutional Research, IPEDS Completions.

Professional Degrees Awarded by Discipline, 2009-10

