



Oregon University System
2010 Fact Book

FACULTY

Full-Time Ranked Instructional Faculty by Age Group 2009-10 Headcount¹

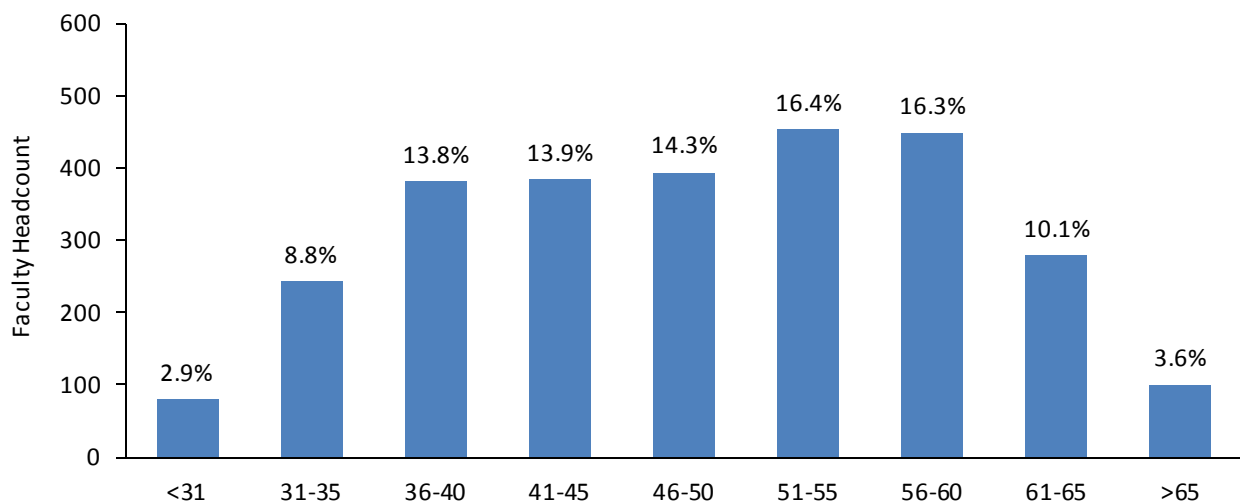
Age Group	EOU		OIT		OSU		PSU	
	N	%	N	%	N	%	N	%
<31	2	2.1%	7	5.2%	28	3.9%	12	1.8%
31-35	2	2.1%	6	4.5%	76	10.6%	49	7.3%
36-40	11	11.7%	12	9.0%	98	13.7%	93	13.9%
41-45	12	12.8%	19	14.2%	101	14.1%	91	13.6%
46-50	14	14.9%	17	12.7%	109	15.2%	93	13.9%
51-55	18	19.1%	28	20.9%	107	14.9%	100	15.0%
56-60	25	26.6%	25	18.7%	104	14.5%	125	18.7%
61-65	9	9.6%	14	10.4%	71	9.9%	71	10.6%
>65	1	1.1%	6	4.5%	23	3.2%	33	4.9%
Total	94	100.0%	134	100.0%	717	100.0%	667	100.0%

Age Group	SOU		UO		WOU		OUS Total	
	N	%	N	%	N	%	N	%
<31	3	1.5%	21	2.8%	7	3.6%	80	2.9%
31-35	8	4.1%	84	11.1%	18	9.2%	243	8.8%
36-40	15	7.7%	125	16.4%	27	13.8%	381	13.8%
41-45	22	11.2%	113	14.9%	26	13.3%	384	13.9%
46-50	37	18.9%	92	12.1%	32	16.4%	394	14.3%
51-55	37	18.9%	125	16.4%	38	19.5%	453	16.4%
56-60	37	18.9%	113	14.9%	20	10.3%	449	16.3%
61-65	29	14.8%	68	8.9%	17	8.7%	279	10.1%
>65	8	4.1%	19	2.5%	10	5.1%	100	3.6%
Total	196	100.0%	760	100.0%	195	100.0%	2,763	100.0%

¹ This table reports regular full-time faculty (.90 FTE or greater) whose primary assignment is instruction (more than .50 FTE in an instructional department). Regular faculty on sabbatical leave are included. For Oregon State University, ranked full-time faculty at the Agricultural Experiment Station, the Forest Research Laboratory, and the Extension Service are included as long as some of their FTE is budgeted in an instructional department.

Source: OUS Institutional Research, October payroll.

Full-Time Ranked Instructional Faculty by Age Group



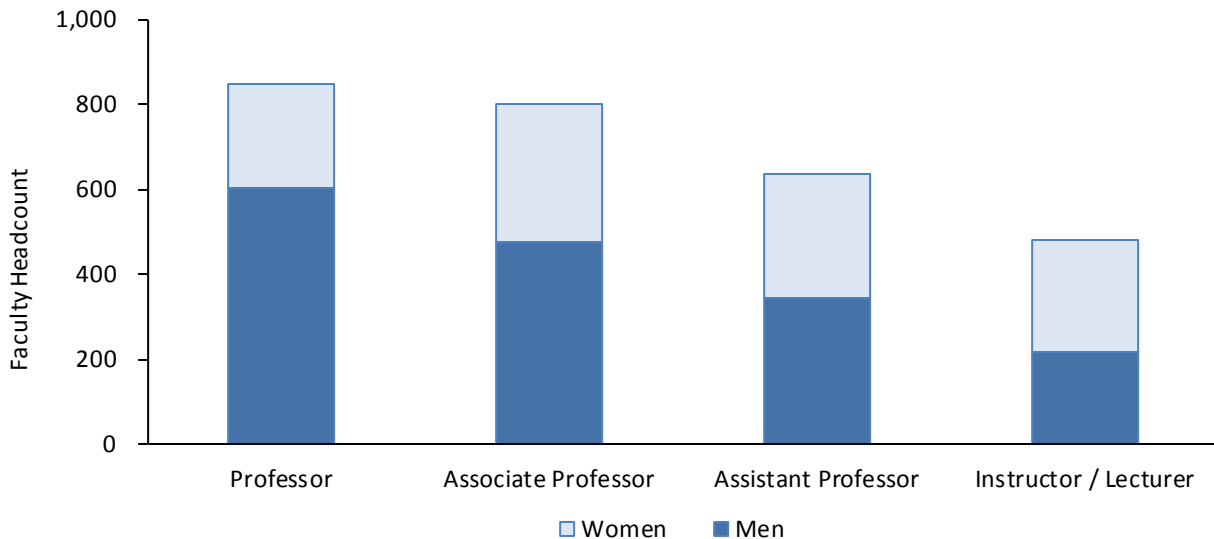
Full-Time Ranked Instructional Faculty by Gender 2009-10 Headcount¹

Institution	Gender	Professor	Associate Professor	Assistant Professor	Instructor/ Lecturer	Total	Percent
EOU	Men	21	19	14	2	56	59.6%
	Women	9	16	10	3	38	40.4%
	Total	30	35	24	5	94	100.0%
OIT	Men	26	26	19	10	81	60.4%
	Women	11	16	15	11	53	39.6%
	Total	37	42	34	21	134	100.0%
OSU	Men	156	128	103	71	458	63.9%
	Women	40	87	66	66	259	36.1%
	Total	196	215	169	137	717	100.0%
PSU	Men	148	98	83	34	363	54.4%
	Women	64	64	98	78	304	45.6%
	Total	212	162	181	112	667	100.0%
SOU	Men	50	37	12	19	118	60.2%
	Women	22	28	9	19	78	39.8%
	Total	72	65	21	38	196	100.0%
UO	Men	163	141	92	65	461	60.7%
	Women	66	86	70	77	299	39.3%
	Total	229	227	162	142	760	100.0%
WOU	Men	40	28	22	16	106	54.4%
	Women	30	27	21	11	89	45.6%
	Total	70	55	43	27	195	100.0%
Total	Men	604	477	345	217	1,643	59.5%
	Women	242	324	289	265	1,120	40.5%
	Total	846	801	634	482	2,763	100.0%

¹ This table reports regular full-time faculty (.90 FTE or greater) whose primary assignment is instruction (more than .50 FTE in an instructional department). Regular faculty on sabbatical leave are included. For Oregon State University, ranked full-time faculty at the Agricultural Experiment Station, the Forest Research Laboratory, and the Extension Service are included as long as some of their FTE is budgeted in an instructional department.

Source: OUS Institutional Research, October payroll.

Full-Time Ranked Instructional Faculty by Gender

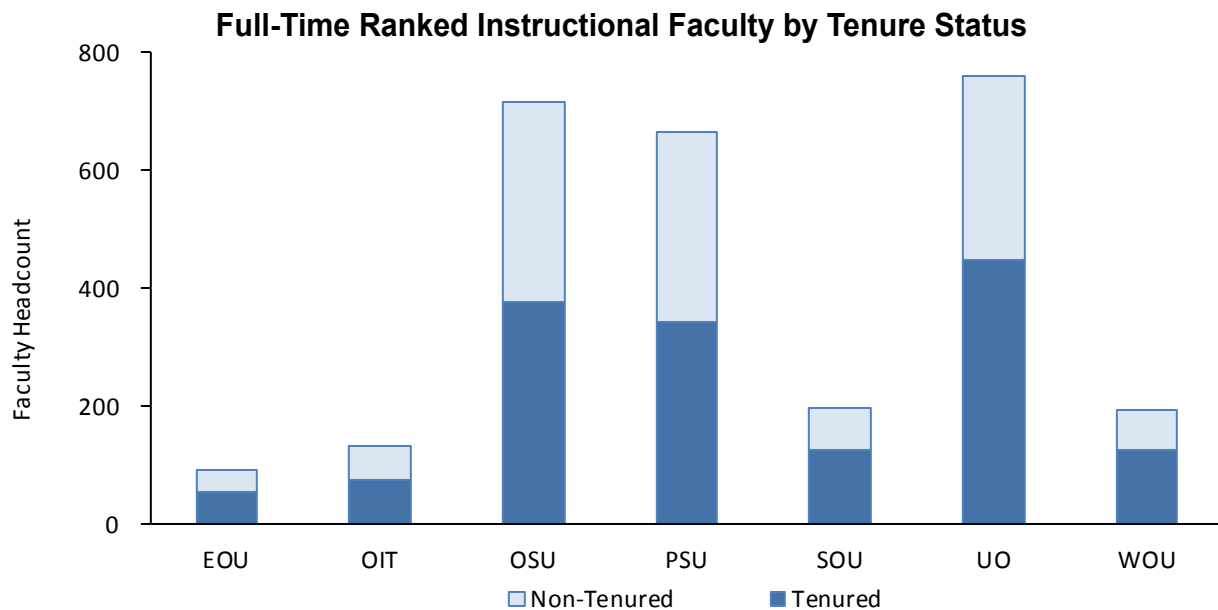


Full-Time Ranked Instructional Faculty by Tenure Status 2009-10 Headcount¹

Institution	Tenure Status	Professor	Associate Professor	Assistant Professor	Instructor/ Lecturer	Total	Percent
EOU	Tenured	28	29	-	-	57	60.6%
	Non-Tenured	2	6	24	5	37	39.4%
	Total	30	35	24	5	94	100.0%
OIT	Tenured	36	35	5	-	76	56.7%
	Non-Tenured	1	7	29	21	58	43.3%
	Total	37	42	34	21	134	100.0%
OSU	Tenured	186	180	5	6	377	52.6%
	Non-Tenured	10	35	164	131	340	47.4%
	Total	196	215	169	137	717	100.0%
PSU	Tenured	207	133	3	-	343	51.4%
	Non-Tenured	5	29	178	112	324	48.6%
	Total	212	162	181	112	667	100.0%
SOU	Tenured	72	54	2	-	128	65.3%
	Non-Tenured	-	11	19	38	68	34.7%
	Total	72	65	21	38	196	100.0%
UO	Tenured	225	219	-	4	448	58.9%
	Non-Tenured	4	8	162	138	312	41.1%
	Total	229	227	162	142	760	100.0%
WOU	Tenured	70	55	-	-	125	64.1%
	Non-Tenured	-	-	43	27	70	35.9%
	Total	70	55	43	27	195	100.0%
Total	Tenured	824	705	15	10	1,554	56.2%
	Non-Tenured	22	96	619	472	1,209	43.8%
	Total	846	801	634	482	2,763	100.0%

¹ This table reports regular full-time faculty (.90 FTE or greater) whose primary assignment is instruction (more than .50 FTE in an instructional department). Regular faculty on sabbatical leave are included. For Oregon State University, ranked full-time faculty at the Agricultural Experiment Station, the Forest Research Laboratory, and the Extension Service are included as long as some of their FTE is budgeted in an instructional department.

Source: OUS Institutional Research, October payroll.



Instructional Faculty and Graduate Assistants by Full-Time/Part-Time Status 2009-10 Headcount¹

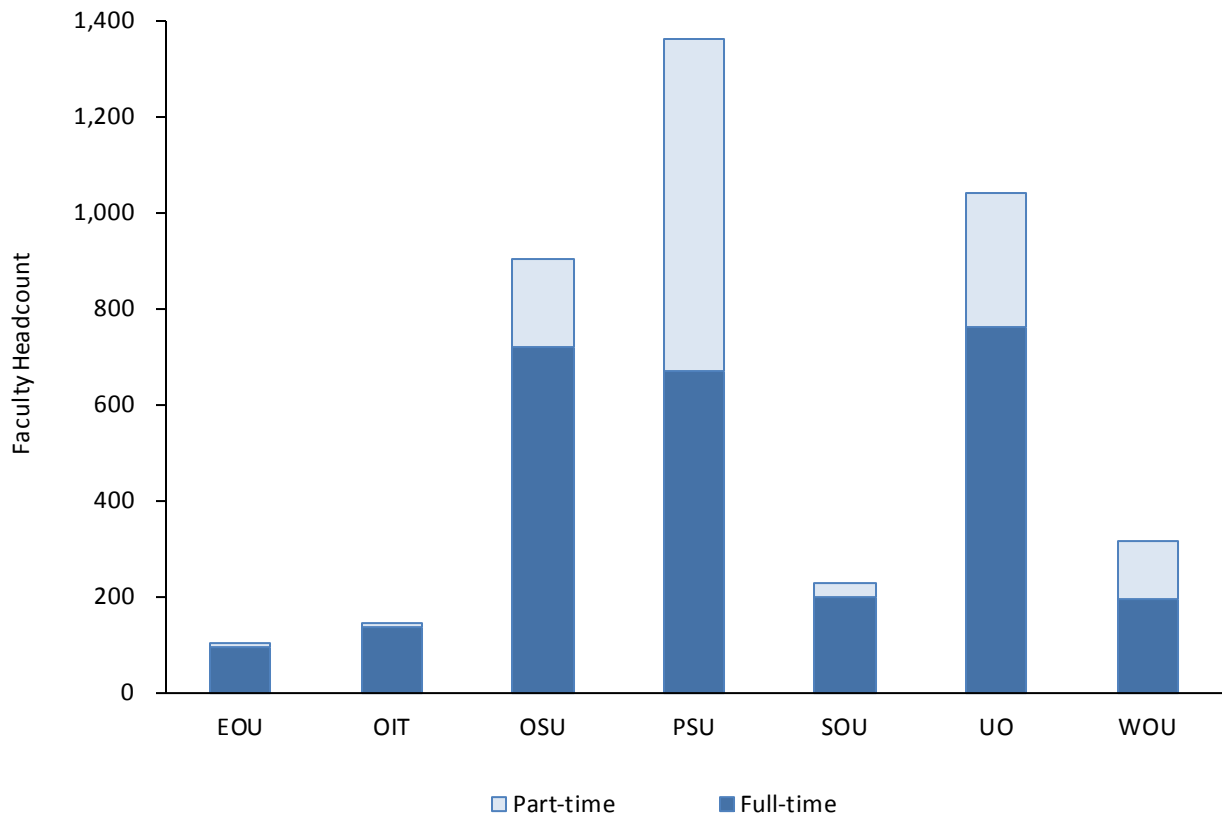
Institution	Professor	Associate Professor	Assistant Professor	Instructor/ Lecturer	Ranked Subtotal		Graduate Assistant	Other Ranks	Total	
					N	%			N	%
EOU										
Full-Time	30	35	24	5	94	91.3%	-	-	94	88.7%
Part-Time	1	1	3	4	9	8.7%	-	3	12	11.3%
Total	31	36	27	9	103	100.0%	-	3	106	100.0%
OIT										
Full-Time	37	42	34	21	134	93.7%	-	-	134	93.1%
Part-Time	3	-	2	4	9	6.3%	-	1	10	6.9%
Total	40	42	36	25	143	100.0%	-	1	144	100.0%
OSU										
Full-Time	196	215	169	137	717	79.5%	-	29	746	43.9%
Part-Time	15	8	10	152	185	20.5%	754	15	954	56.1%
Total	211	223	179	289	902	100.0%	754	44	1,700	100.0%
PSU										
Full-Time	212	162	181	112	667	49.0%	-	6	673	35.5%
Part-Time	44	26	137	488	695	51.0%	512	14	1,221	64.5%
Total	256	188	318	600	1,362	100.0%	512	20	1,894	100.0%
SOU										
Full-Time	72	65	21	38	196	85.6%	-	-	196	64.7%
Part-Time	8	3	1	21	33	14.4%	10	64	107	35.3%
Total	80	68	22	59	229	100.0%	10	64	303	100.0%
UO										
Full-Time	229	227	162	142	760	73.1%	-	13	773	36.3%
Part-Time	18	15	12	235	280	26.9%	1,060	19	1,359	63.7%
Total	247	242	174	377	1,040	100.0%	1,060	32	2,132	100.0%
WOU										
Full-Time	70	55	43	27	195	61.9%	-	-	195	54.0%
Part-Time	-	-	26	94	120	38.1%	10	36	166	46.0%
Total	70	55	69	121	315	100.0%	10	36	361	100.0%
Total										
Full-Time	846	801	634	482	2,763	67.5%	-	48	2,811	42.3%
Part-Time	89	53	191	998	1,331	32.5%	2,346	152	3,829	57.7%
Total	935	854	825	1,480	4,094	100.0%	2,346	200	6,640	100.0%

¹ This table reports regular full-time faculty (.90 FTE or greater) whose primary assignment is instruction (more than .50 FTE in an instructional department) and part-time faculty (less than .90 FTE) whose assignment includes instruction. Regular faculty on sabbatical leave are included. For Oregon State University, ranked full-time faculty at the Agricultural Experiment Station, the Forest Research Laboratory, and the Extension Service are included as long as some of their FTE is budgeted in an instructional department.

Source: OUS Institutional Research, October payroll.

Ranked Instructional Faculty by Full-Time/Part-Time Status 2009-10

(Data appears on previous page)



Source: OUS Institutional Research, October payroll.

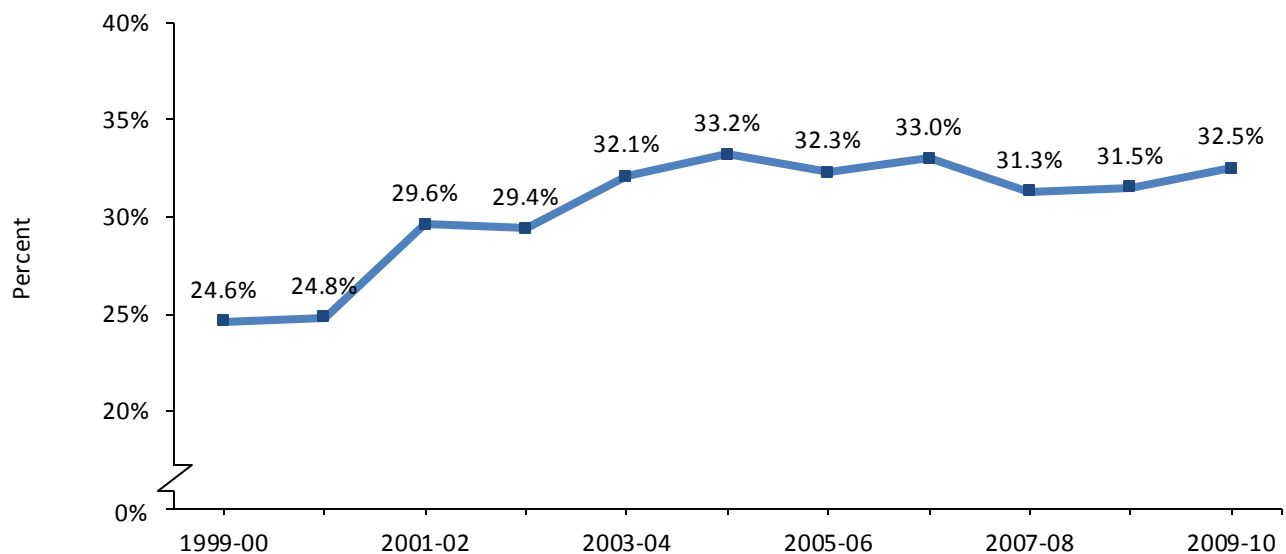
Ranked Instructional Faculty by Full-Time/Part-Time Status System Total, 1999-00 through 2009-10

Academic Year	Professor		Associate Professor		Assistant Professor		Instructor/Lecturer		Grand Total	
	N	%	N	%	N	%	N	%	N	%
1999-00										
Full-Time	815	90.1%	636	91.2%	581	79.9%	264	36.8%	2,296	75.4%
Part-Time	90	9.9%	61	8.8%	146	20.1%	454	63.2%	751	24.6%
Total	905	100.0%	697	100.0%	727	100.0%	718	100.0%	3,047	100.0%
2004-05										
Full-Time	725	85.9%	728	89.9%	692	79.2%	313	27.1%	2,458	66.8%
Part-Time	119	14.1%	82	10.1%	182	20.8%	841	72.9%	1,224	33.2%
Total	844	100.0%	810	100.0%	874	100.0%	1,154	100.0%	3,682	100.0%
2009-10										
Full-Time	846	90.5%	801	93.8%	634	76.8%	482	32.6%	2,763	67.5%
Part-Time	89	9.5%	53	6.2%	191	23.2%	998	67.4%	1,331	32.5%
Total	935	100.0%	854	100.0%	825	100.0%	1,480	100.0%	4,094	100.0%

Includes ranked faculty, lecturer - professor. Faculty members whose position FTE is .90 or greater are reported as full-time, otherwise they are reported as part-time. To be counted as instructional, full-time faculty must have instructional FTE that is greater than .50.

Source: OUS Institutional Research, October payroll.

Percentage of Part-Time Ranked Instructional Faculty 1999-00 through 2009-10



**Faculty and Staff by Racial/Ethnic Group and Gender
2009-10 Headcount
Oregon University System Total**

	Faculty ¹	Exec/Admin/ Mgmt	Profess'l Non-faculty	Tech/ Paraprof'l	Secty/ Clerical	Skilled Craft	Service/ Maint	Total
American Indian/Alaska Native								
Male	24	1	15	7	2	1	19	69
Female	20	2	36	8	24	2	11	103
Subtotal	44	3	51	15	26	3	30	172
Asian/Pacific Islander								
Male	150	12	51	15	9	5	11	253
Female	135	6	77	13	63	-	24	318
Subtotal	285	18	128	28	72	5	35	571
Black/African American								
Male	37	6	43	7	3	3	20	119
Female	31	5	34	8	12	-	3	93
Subtotal	68	11	77	15	15	3	23	212
Hispanic/Latino								
Male	87	7	42	16	10	7	27	196
Female	82	2	60	25	50	-	30	249
Subtotal	169	9	102	41	60	7	57	445
Total Minority								
Male	298	26	151	45	24	16	77	637
Female	268	15	207	54	149	2	68	763
Subtotal	566	41	358	99	173	18	145	1,400
White								
Male	2,583	257	1,034	374	168	291	370	5,077
Female	2,308	165	1,766	383	1,353	22	228	6,225
Subtotal	4,891	422	2,800	757	1,521	313	598	11,302
Nonresident Alien								
Male	230	2	20	4	1	-	2	259
Female	151	3	20	8	7	-	-	189
Subtotal	381	5	40	12	8	-	2	448
Declined to Respond								
Male	239	14	74	17	13	22	26	405
Female	155	11	79	21	76	1	11	354
Subtotal	394	25	153	38	89	23	37	759
Total								
Male	3,350	299	1,279	440	206	329	475	6,378
Female	2,882	194	2,072	466	1,585	25	307	7,531
Grand Total	6,232	493	3,351	906	1,791	354	782	13,909

¹ All persons with faculty status whose specific assignments include instruction, research, or public service.

Source: IPEDS Human Resources.

Average Faculty Salary by Discipline Group, 2009-10 Full-Time and Part-Time Ranked Instructional Faculty

Discipline Group	EOU		OIT		OSU		PSU	
	FTE	Avg Sal	FTE	Avg Sal	FTE	Avg Sal	FTE	Avg Sal
Agriculture/Forestry	-	-	-	-	114	74,985	-	-
Education	20	52,079	-	-	37	51,475	85	57,846
High-Market Disciplines ¹	16	64,496	9	62,719	197	88,514	141	93,048
Family/Consumer Sciences	-	-	-	-	56	60,070	-	-
Humanities/Fine Arts	29	54,994	19	56,467	108	53,561	212	54,246
Natural Science/Math	19	52,110	27	54,530	157	73,195	107	73,450
Nursing/Allied Health ²	-	-	42	49,343	19	68,420	-	-
Social Sciences	14	56,168	-	-	74	60,147	196	65,854
Technology Programs	-	-	43	62,545	-	-	-	-
All Other Departments	1	46,737	-	-	42	65,484	89	50,720
All Disciplines	99	55,501	139	56,200	804	70,948	831	66,034

Discipline Group	SOU		UO		WOU		Total ³	
	FTE	Avg Sal	FTE	Avg Sal	FTE	Avg Sal	FTE	Avg Sal
Agriculture/Forestry	-	-	-	-	-	-	114	74,985
Education	30	51,559	63	63,967	53	47,194	288	55,355
High-Market Disciplines ¹	23	56,019	110	109,829	25	52,999	521	89,920
Family/Consumer Sciences	-	-	-	-	-	-	56	59,952
Humanities/Fine Arts	70	54,655	275	56,336	76	50,412	790	54,630
Natural Science/Math	40	59,391	157	78,016	32	48,153	539	70,458
Nursing/Allied Health ²	-	-	-	-	-	-	61	55,324
Social Sciences	44	57,077	165	76,317	39	57,697	532	66,723
Technology Programs	-	-	-	-	-	-	43	62,545
All Other Departments	-	-	99	64,218	3	38,658	233	58,932
All Disciplines	207	55,780	869	72,274	228	50,700	3,176	66,456

Salaries reported here are the average 9-month salaries (with 12-month converted to a 9-month equivalent), weighted by FTE.

¹ High-market disciplines include computer science, business, law, veterinary medicine, and engineering.

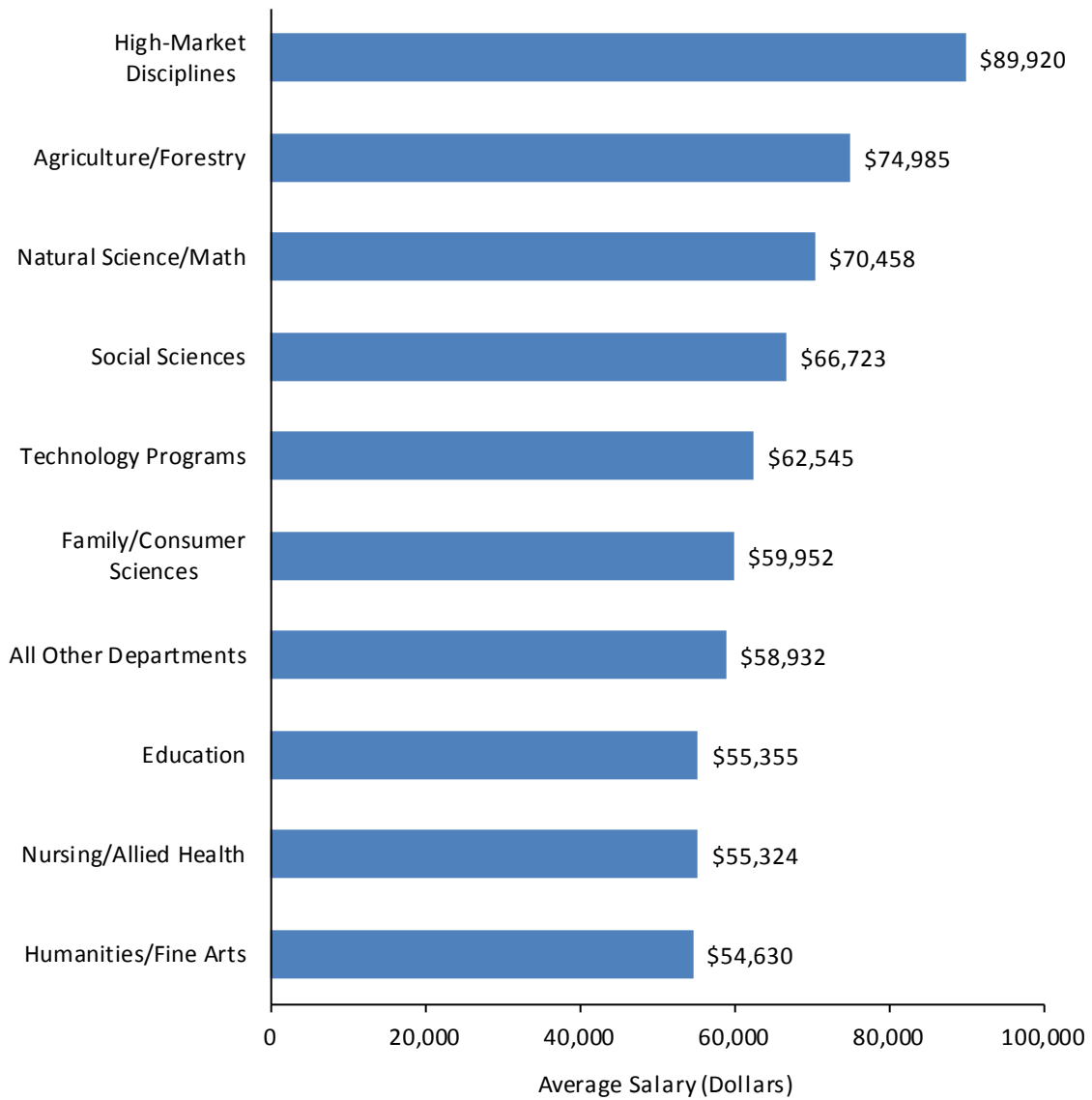
² OHSU nursing faculty teaching courses at EOU, OIT, and SOU are not included in this table.

³ In some cases, total FTE does not reflect the exact sum of institution totals, due to rounding.

Source: OUS Institutional Research, October payroll.

Average Faculty Salary by Discipline Group 2009-10

(Data appears on previous page)



Source: OUS Institutional Research, October payroll.

**Average Salaries of Full-Time Instructional Faculty
1999-00 and 2005-06 through 2009-10**
(Average salary in thousands of dollars)

	1999-00	2005-06	2006-07	2007-08	2008-09	2009-10
Eastern Oregon University						
Professor	\$52.1	\$57.2	\$58.1	\$58.7	\$64.4	\$65.1
Associate Professor	40.5	50.3	49.3	49.1	52.2	54.6
Assistant Professor	36.2	44.2	43.1	43.9	46.3	50.9
Instructor	28.9	33.2	34.2	34.8	36.9	36.2
All Ranks ¹	42.7	50.0	49.8	50.2	53.9	56.3
Oregon Institute of Technology						
Professor	54.0	62.2	63.1	64.7	68.8	70.7
Associate Professor	48.5	52.3	53.3	53.8	57.4	57.0
Assistant Professor	43.3	45.5	46.6	48.9	48.8	48.7
Instructor	34.1	37.0	38.6	40.0	41.3	42.0
All Ranks	48.1	53.0	54.0	55.4	58.0	58.6
Oregon State University						
Professor	70.9	79.8	84.8	88.7	91.9	93.9
Associate Professor	53.0	62.8	64.8	68.7	71.1	77.1
Assistant Professor	46.8	59.2	61.6	64.1	67.5	70.5
Instructor	32.5	39.3	40.0	42.8	44.1	45.6
All Ranks	56.4	66.5	69.6	73.0	76.0	79.4
Portland State University						
Professor	64.5	76.8	83.0	83.6	88.7	93.6
Associate Professor	49.9	59.9	65.3	65.1	67.8	73.4
Assistant Professor	43.7	49.5	54.2	52.7	55.7	59.3
Instructor	33.5	35.6	37.8	38.0	39.8	42.0
All Ranks	52.3	61.5	66.8	66.5	70.1	74.7
Southern Oregon University						
Professor	52.0	58.9	62.0	65.8	69.3	68.8
Associate Professor	43.4	47.9	49.1	51.5	54.3	55.5
Assistant Professor	36.9	41.2	41.1	42.6	45.9	46.7
Instructor	31.8	33.5	29.3	34.8	39.3	40.1
All Ranks	43.9	49.0	50.2	53.0	56.3	56.7
University of Oregon						
Professor	71.5	88.0	88.3	94.8	99.8	103.0
Associate Professor	51.8	63.1	62.1	67.5	72.4	74.6
Assistant Professor	44.6	57.1	60.0	61.9	66.4	69.4
Instructor	32.5	40.1	40.8	43.2	45.0	44.7
All Ranks	55.6	68.9	69.6	74.2	78.8	81.5
Western Oregon University						
Professor	52.9	59.3	64.4	68.0	70.4	69.1
Associate Professor	42.8	47.4	51.8	55.3	56.1	54.7
Assistant Professor	34.5	38.7	40.9	43.1	42.9	42.3
Instructor	27.5	29.3	31.8	32.6	34.1	33.6
All Ranks	43.1	48.1	51.9	54.9	56.0	55.0

¹ All-ranks average salary assumes a distribution of 35% professors, 30% associate professors, 30% assistant professors, and 5% instructors.

Source: American Association of University Professors, ACADEME, the Annual Report on the Economic Status of the Profession, 1999-00 and 2005-06 through 2009-10.

**Average Faculty Salaries among Peer Universities
on List Shared by OSU, PSU, and UO, 2009-10
Weighted Distribution of Faculty by Rank:
Ranked by All-Ranks Average Salary¹
(Dollars in thousands)**

Rank	Institution	State	Prof	Assoc	Asst	Instr	All Ranks
1	University of North Carolina at Chapel Hill	NC	\$143.0	\$92.6	\$80.8	\$88.9	\$106.5
2	SUNY at Buffalo	NY	129.1	89.6	74.4	52.1	97.0
3	University of California-Santa Barbara	CA	131.1	80.1	76.4	-	95.2
4	University of Washington-Seattle	WA	121.9	88.1	77.2	45.7	94.6
5	University of Colorado at Boulder	CO	121.6	88.7	75.2	51.7	94.3
6	University of California-Davis	CA	123.4	83.9	77.0	-	93.8
7	University of Illinois at Chicago	IL	121.4	84.9	73.6	60.2	93.0
8	University of Iowa	IA	124.1	82.5	71.4	46.5	91.9
9	Indiana University Bloomington	IN	120.7	82.0	72.4	-	90.8
10	North Carolina State University	NC	115.1	84.2	70.2	50.5	89.1
11	Purdue University Main Campus	IN	115.8	80.2	72.7	46.4	88.7
12	University of Arizona	AZ	117.3	79.6	68.0	33.0	87.0
13	Iowa State University	IA	111.6	81.8	71.4	31.6	86.6
14	University of Oregon	OR	103.0	74.6	69.4	44.7	81.5
15	Oregon State University	OR	93.9	77.1	70.5	45.6	79.4
16	Indiana University-Purdue University Indianapolis	IN	99.3	75.4	61.4	-	78.1
17	University of Wisconsin-Milwaukee	WI	94.2	71.2	65.9	53.4	76.8
18	The University of Memphis	TN	99.6	69.8	59.3	40.9	75.6
19	Portland State University	OR	93.6	73.4	59.3	42.0	74.7
Weighted Average (without OUS universities)			119.1	82.9	72.4	48.8	90.7
Oregon State University % of average			78.9%	93.0%	97.4%	93.4%	87.6%
Portland State University % of average			78.6%	88.5%	81.9%	85.9%	82.3%
University of Oregon % of average			86.5%	89.9%	95.9%	91.6%	89.8%
Average, All Public Doctoral Universities ²			116.8	80.5	68.7	45.8	87.9

¹ Faculty distribution for each university is standardized to 35% professors, 30% associate professors, 30% assistant professors, and 5% instructors. Where no instructors are reported, the calculation of the all-ranks average uses the average compensation of instructors for all Category I four-year public institutions, as published in ACADEME. Source data are reported by universities on November 30th of each academic year; therefore, increases awarded after November are not included.

² Category I institutions are used to find the average salary for public doctoral universities.

Source: American Association of University Professors, ACADEME: The Annual Report on the Economic Status of the Profession, 2009-10, March/April, 2010.

Average Faculty Salaries among Peer Universities on OSU List, 2009-10
Weighted Distribution of Faculty by Rank:
Ranked by All-Ranks Average Salary¹
(Dollars in thousands)

Rank	Institution	State	Prof	Assoc	Asst	Instr	All Ranks
1	University of California-Davis	CA	\$123.4	\$83.9	\$77.0	-	\$93.8
2	Michigan State University	MI	125.0	87.3	68.6	40.9	92.6
3	North Carolina State University	NC	115.1	84.2	70.2	50.5	89.1
4	Purdue University Main Campus	IN	115.8	80.2	72.7	46.4	88.7
5	University of Arizona	AZ	117.3	79.6	68.0	33.0	87.0
6	Iowa State University	IA	111.6	81.8	71.4	31.6	86.6
7	Colorado State University	CO	108.6	80.6	70.1	-	85.5
8	Oregon State University	OR	93.9	77.1	70.5	45.6	79.4
	Weighted Average (without OSU)		117.8	82.9	71.0	42.2	89.5
	Oregon State University % of average		79.8%	93.0%	99.3%	108.1%	88.7%
	Average, All Public Doctoral Universities ²		116.8	80.5	68.7	45.8	87.9

¹ Faculty distribution for each university is standardized to 35% professors, 30% associate professors, 30% assistant professors, and 5% instructors. Where no instructors are reported, the calculation of the all-ranks average uses the average compensation of instructors for all Category I four-year public institutions, as published in ACADEME. Source data are reported by universities on November 30th of each academic year; therefore, increases awarded after November are not included.

² Category I institutions are used to find the average salary for public doctoral universities.

Source: American Association of University Professors, ACADEME: The Annual Report on the Economic Status of the Profession, 2009-10, March/April, 2010.

Average Faculty Salaries among Peer Universities on PSU List, 2009-10
Weighted Distribution of Faculty by Rank:
Ranked by All-Ranks Average Salary¹
(Dollars in thousands)

Rank	Institution	State	Prof	Assoc	Asst	Instr	All Ranks
1	University of Illinois at Chicago	IL	\$121.4	\$84.9	\$73.6	\$60.2	\$93.0
2	George Mason University	VA	126.4	82.4	69.6	55.8	92.6
3	University of Texas at Arlington	TX	103.8	79.0	71.1	-	83.6
4	San Diego State University	CA	101.1	78.8	72.1	-	83.0
5	University of Toledo-Main Campus	OH	102.7	80.1	67.0	54.6	82.8
6	Indiana University-Purdue University Indianapolis	IN	99.3	75.4	61.4	-	78.1
7	University of Wisconsin-Milwaukee	WI	94.2	71.2	65.9	53.4	76.8
8	Western Michigan University	MI	98.0	73.2	57.6	43.5	75.7
9	The University of Memphis	TN	99.6	69.8	59.3	40.9	75.6
10	Portland State University	OR	93.6	73.4	59.3	42.0	74.7
Weighted Average (without PSU)			106.5	77.4	66.4	50.0	82.9
Portland State University % of average			87.9%	94.8%	89.3%	83.9%	90.0%
Average, All Public Doctoral Universities ²			116.8	80.5	68.7	45.8	87.9

¹ Faculty distribution for each university is standardized to 35% professors, 30% associate professors, 30% assistant professors, and 5% instructors. Where no instructors are reported, the calculation of the all-ranks average uses the average compensation of instructors for all Category I four-year public institutions, as published in ACADEME. Source data are reported by universities on November 30th of each academic year; therefore, increases awarded after November are not included.

² Category I institutions are used to find the average salary for public doctoral universities.

Source: American Association of University Professors, ACADEME: The Annual Report on the Economic Status of the Profession, 2009-10, March/April, 2010.

Average Faculty Salaries among Peer Universities on UO List, 2009-10
Weighted Distribution of Faculty by Rank:
Ranked by All-Ranks Average Salary¹
(Dollars in thousands)

Rank	Institution	State	Prof	Assoc	Asst	Instr	All Ranks
1	University of Michigan-Ann Arbor	MI	\$144.0	\$94.3	\$83.1	\$63.5	\$106.8
2	University of North Carolina at Chapel Hill	NC	143.0	92.6	80.8	88.9	106.5
3	University of Virginia	VA	134.7	92.7	75.2	53.3	100.2
4	University of California-Santa Barbara	CA	131.1	80.1	76.4	-	95.2
5	University of Washington-Seattle	WA	121.9	88.1	77.2	45.7	94.6
6	University of Colorado at Boulder	CO	121.6	88.7	75.2	51.7	94.3
7	University of Iowa	IA	124.1	82.5	71.4	46.5	91.9
8	Indiana University Bloomington	IN	120.7	82.0	72.4	-	90.8
9	University of Oregon	OR	103.0	74.6	69.4	44.7	81.5
Weighted Average (without UO)			130.5	88.4	76.9	55.7	98.1
University of Oregon % of average			78.9%	84.4%	90.2%	80.3%	83.1%
Average, All Public Doctoral Universities ²			116.8	80.5	68.7	45.8	87.9

¹ Faculty distribution for each university is standardized to 35% professors, 30% associate professors, 30% assistant professors, and 5% instructors. Where no instructors are reported, the calculation of the all-ranks average uses the average compensation of instructors for all Category I four-year public institutions, as published in ACADEME. Source data are reported by universities on November 30th of each academic year; therefore, increases awarded after November are not included.

² Category I institutions are used to find the average salary for public doctoral universities.

Source: American Association of University Professors, ACADEME: The Annual Report on the Economic Status of the Profession, 2009-10, March/April, 2010.

**Average Faculty Salaries among Peer Universities
on List Shared by EOU, SOU, and WOU, 2009-10**
Weighted Distribution of Faculty by Rank:
Ranked by All-Ranks Average Salary¹
(Dollars in thousands)

Rank	Institution	State	Prof	Assoc	Asst	Instr	All Ranks
1	California State University-Stanislaus	CA	\$92.9	\$69.2	\$62.9	-	\$74.6
2	University of Michigan-Flint	MI	90.5	69.4	63.7	54.7	74.3
3	Plymouth State University	NH	83.4	67.6	57.7	-	69.2
4	SUNY at Fredonia	NY	86.4	64.6	56.1	-	68.9
5	University of Mary Washington	VA	83.8	64.1	53.5	54.1	67.3
6	University of Wisconsin-Parkside	WI	75.1	64.3	56.2	-	64.9
7	Eastern Washington University	WA	74.8	64.5	53.9	-	64.1
8	Southeast Missouri State University	MO	74.0	58.9	53.8	41.6	61.8
9	Southern Utah University	UT	74.7	60.2	49.8	-	61.6
10	Fort Hays State University	KS	72.5	59.2	50.0	44.3	60.4
11	Southern Oregon University	OR	68.8	55.5	46.7	40.1	56.7
12	Eastern Oregon University	OR	65.1	54.6	50.9	36.2	56.3
13	Western Oregon University	OR	69.1	54.7	42.3	33.6	55.0
Weighted Average (without OUS universities)			80.2	63.6	55.4	47.7	66.1
Eastern Oregon University % of average			81.2%	85.9%	91.9%	75.8%	85.0%
Southern Oregon University % of average			85.8%	87.2%	84.3%	84.0%	85.8%
Western Oregon University % of average			86.2%	86.0%	76.3%	70.3%	83.1%
Average, All Public Master's Universities ²			89.6	71.1	60.0	48.3	73.1

¹ Faculty distribution for each university is standardized to 35% professors, 30% associate professors, 30% assistant professors, and 5% instructors. Where no instructors are reported, the calculation of the all-ranks average uses the average compensation of instructors for all Category IIA four-year public institutions, as published in ACADEME. Source data are reported by universities on November 30th of each academic year; therefore, increases awarded after November are not included.

² Category IIA institutions are used to find the average salary for public master's universities.

Source: American Association of University Professors, ACADEME: The Annual Report on the Economic Status of the Profession, 2009-10, March/April, 2010.

Average Faculty Salaries among Peer Universities on OIT List¹, 2009-10
Weighted Distribution of Faculty by Rank:
Ranked by All-Ranks Average Salary²
(Dollars in thousands)

Rank	Institution	State	Prof	Assoc	Asst	Instr	All Ranks
1	SUNY Institute of Technology at Utica-Rome	NY	\$100.5	\$79.3	\$78.7	\$55.7	\$85.4
2	Louisiana Tech University	LA	83.0	70.1	59.8	39.1	70.0
3	Indiana University Northwest	IN	79.1	65.7	53.7	-	65.7
4	Midwestern State University	TX	78.5	63.3	56.7	40.2	65.5
5	Southern Polytechnic State University	GA	77.6	65.6	55.3	37.8	65.4
6	University of Louisiana at Monroe	LA	73.1	64.9	56.6	42.4	64.2
7	Eastern Washington University	WA	74.8	64.5	53.9	-	63.9
8	Southwestern Oklahoma State University	OK	77.2	64.3	50.7	44.2	63.8
9	University of Pittsburgh Bradford	PA	74.1	62.6	53.1	45.3	62.9
10	Idaho State University	ID	76.7	60.2	51.6	42.3	62.5
11	Savannah State University	GA	73.5	62.9	51.1	40.0	61.9
12	Weber State University	UT	71.5	61.6	52.8	43.0	61.5
13	West Virginia University Institute of Technology	WV	73.5	54.8	50.3	45.4	59.5
14	University of Wisconsin Platteville	WI	69.6	58.2	49.8	-	59.0
15	Oregon Institute of Technology	OR	70.7	57.0	48.7	42.0	58.6
16	Arkansas Tech University	AR	68.9	57.9	48.1	37.6	57.8
17	West Liberty University	WV	59.0	52.0	45.0	41.6	51.8
	Weighted Average (without OIT)		75.3	62.9	53.8	42.3	63.5
	Oregon Institute of Technology % of average		94.0%	90.5%	90.5%	99.4%	92.2%
	Average, All Public Baccalaureate Universities ³		84.5	68.4	57.0	44.5	69.4

¹ A revised list of OIT peer institutions was finalized in June 2010.

² Faculty distribution for each university is standardized to 35% professors, 30% associate professors, 30% assistant professors, and 5% instructors. Where no instructors are reported, the calculation of the all-ranks average uses the average compensation of instructors for all Category IIB four-year public institutions, as published in ACADEME. Source data are reported by universities on November 30th of each academic year; therefore, increases awarded after November are not included.

³ Category IIB institutions are used to find the average salary for public baccalaureate universities.

Source: American Association of University Professors, ACADEME: The Annual Report on the Economic Status of the Profession, 2009-10, March/April, 2010.

Sponsored Research and Other Support¹ Fiscal Years 1999-00 and 2006-07 through 2009-10

	1999-00	2006-07	2007-08	2008-09	2009-10
Eastern Oregon University	\$1,730,642	\$2,498,653	\$2,549,708	\$2,491,149	\$2,381,529
Oregon Institute of Technology	2,120,085	4,552,924	4,703,546	5,318,509	4,366,828
Oregon State University	102,181,692	148,951,669	151,080,877	166,335,024	183,261,445
Portland State University	25,314,007	38,381,928	41,130,284	53,892,832	59,248,590
Southern Oregon University	1,838,917	3,705,966	3,586,852	2,971,259	2,640,464
University of Oregon	61,694,792	95,871,682	99,369,392	107,004,949	113,186,015
Western Oregon University	6,867,215	10,494,835	10,954,204	11,143,315	11,530,833
Chancellor's Office	3,601,231	2,803,892	2,647,344	1,696,045	3,559,083
Total²	\$205,348,582	\$307,261,549	\$316,022,206	\$350,853,083	\$380,174,787

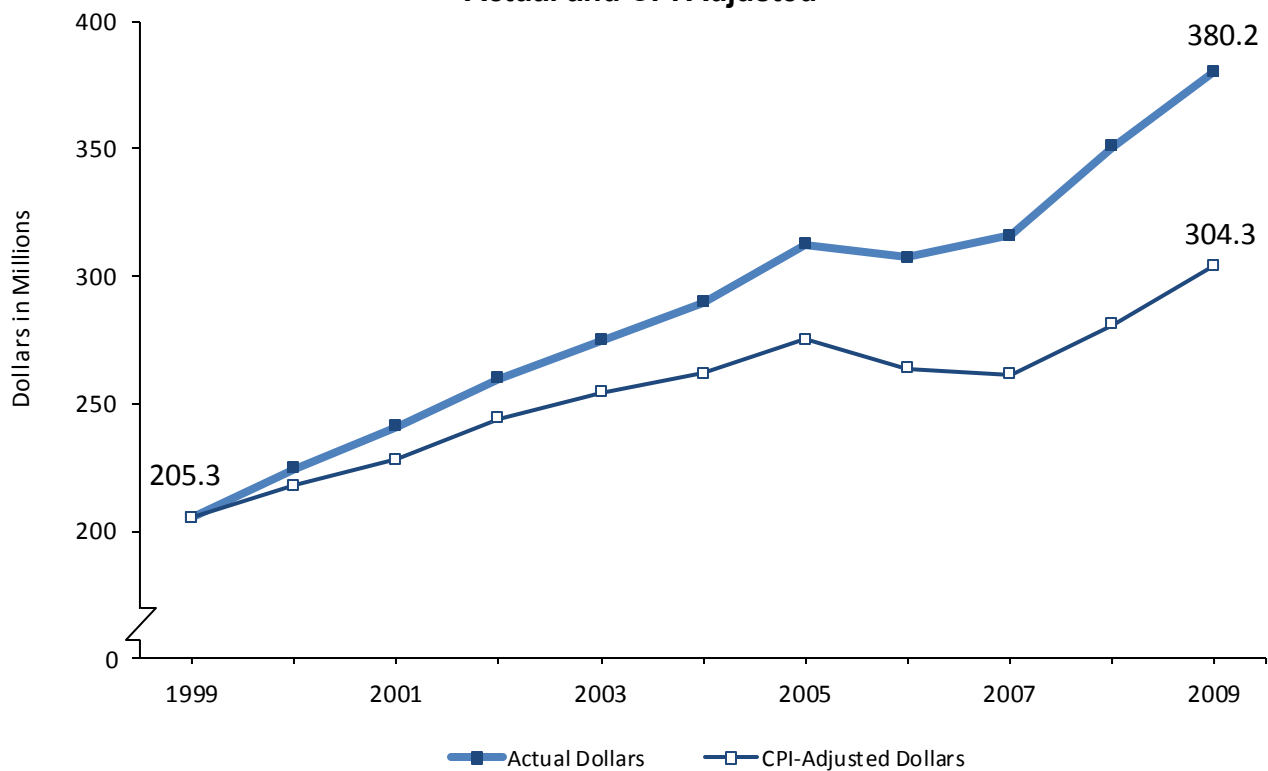
The data definitions used in this table differ from those used in similar tables appearing in OUS Fact Books prior to 2010, making comparisons with earlier years unwise.

¹ Restricted funds expenditures. Excludes student aid and gifts. Includes sponsored research, teaching/training grants, student services grants, library grants, and similar support.

² Excludes OHSU.

Source: OUS Controller's Division.

OUS Sponsored Research and Other Support Actual and CPI Adjusted



Sponsored Research and Other Support¹ per Full-Time Faculty² Fiscal Years 1999-00 and 2006-07 through 2009-10

	1999-00	2006-07	2007-08	2008-09	2009-10
Eastern Oregon University	\$21,907	\$25,239	\$25,755	\$24,911	\$25,335
Oregon Institute of Technology	18,597	34,233	38,240	41,229	32,588
Oregon State University	147,448	211,279	216,448	232,962	255,595
Portland State University	56,004	61,215	65,494	80,317	88,828
Southern Oregon University	10,508	19,403	19,388	16,148	13,472
University of Oregon	98,870	137,747	136,872	143,824	148,929
Western Oregon University	43,190	64,783	62,240	58,959	59,132
Total³	\$87,869	\$116,517	\$118,928	\$127,850	\$136,307

The data definitions used in this table differ from those used in similar tables appearing in OUS Fact Books prior to 2010, making comparisons with earlier years unwise.

¹ Restricted funds expenditures. Excludes student aid and gifts. Includes sponsored research, teaching/training grants, student services grants, library grants, and similar support.

² This table reports regular full-time faculty (.90 FTE or greater) whose primary assignment is instruction (more than .50 FTE in an instructional department). Regular faculty on sabbatical leave are included. For Oregon State University, ranked full-time faculty at the Agricultural Experiment Station, the Forest Research Laboratory, and the Extension Service are included as long as some of their FTE is budgeted in an instructional department.

³ Excludes OHSU and the Chancellor's Office.

Sources: (1) OUS Controller's Division. (2) OUS Institutional Research Faculty Reports.

OUS Sponsored Research and Other Support per Full-Time Faculty Actual and CPI Adjusted

